



**SOLD**

## THE ONE YOU HAVE BEEN WAITING FOR! - SOLD BY NATASHA WILLIAMS

Take advantage of this low-maintenance coastal 3 bedroom home. Complete with great natural light throughout, cosy living space, good indoor/outdoor flow, practical I-shaped kitchen, generous built-in storage and a single lockup garage, all situated with ease of access from local schools, shops and the beautiful scenic beaches - this investment opportunity is not to be surpassed!

- 3 good sized bedrooms all with built-in wardrobes and great natural light,
- Situated on 474 m2 corner block in a quiet no through road,
- Lounge about in the sun filled lounge with great flow to indoor or outdoor living,
- Enjoy a morning cuppa from the front balcony as you contemplate the day ahead,
- Prepare family meals in the I-shaped kitchen with electric cooktop, range hood, plenty of cupboard storage,
- Enjoy home cooked meals together in the dining area located just-off the kitchen,
- Revitalise in the well-appointed bathroom with bath, shower, vanity and separate toilet,
- Keep on top of the daily household chores in the internal laundry with external access to backyard,
- Secure your vehicle safely under the single lockup garage,
- Head to the beach for a quick burst of energy and stroll along the coastline or jump in for a refreshing swim while soaking in the sunlight,
- Additional features of this well-presented property include a TV antenna, electric hot water service and good quality fittings throughout

Extra details:

Council rates per quarter: \$564.00

Water rates per quarter: \$230.00

Potential rent per week: \$370.00

### INSPECT THIS PROPERTY

If you think this property may suit you, it's easy to arrange an inspection. Simply call your local agent Natasha on 0449 281 201 to arrange a suitable time.

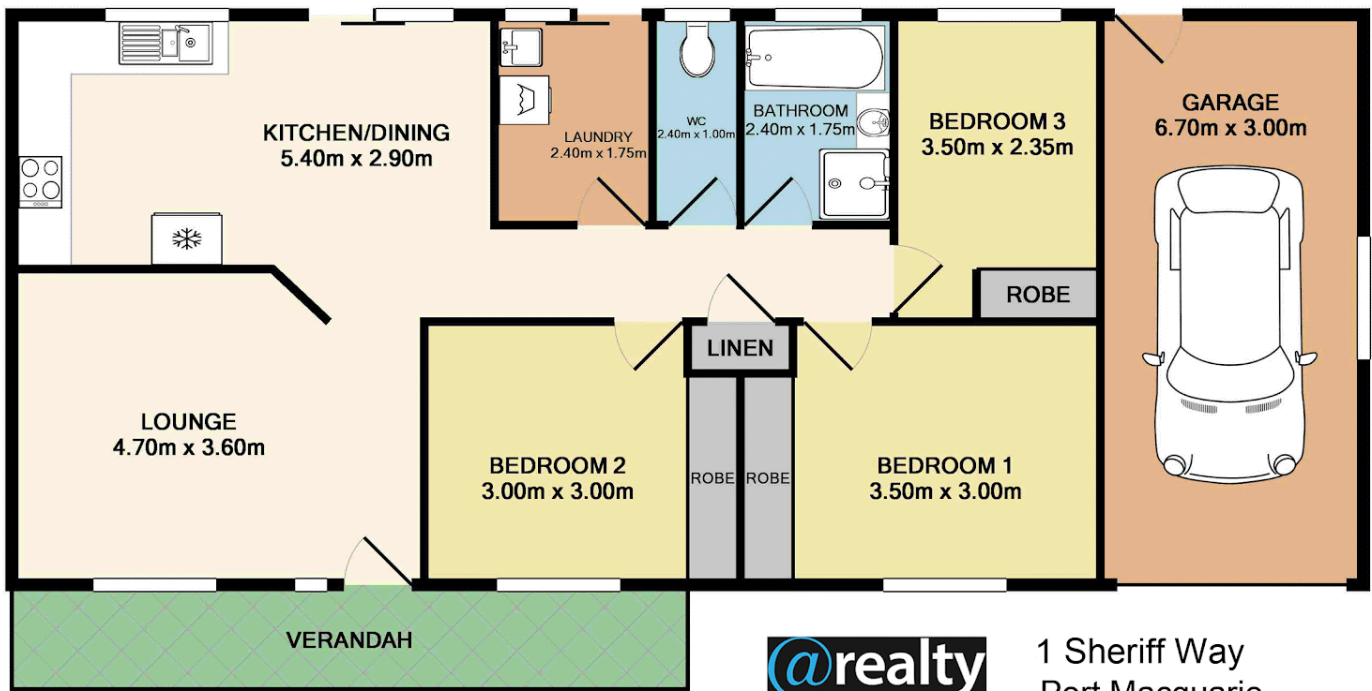
3 BED | 1 BATH | 0 CAR

PRICE:  
\$400,000

OPEN FOR INSPECTION:  
N/A



**Nat Williams**  
natashawilliams@atrealty.com.au  
[www.atrealty.com.au](http://www.atrealty.com.au)



open2view.com.au

Measurements are approximate. Not to Scale. For illustrative purposes only.

Disclaimer: Please note this floor plan is for marketing purposes and is to be used as a guide only. All dimensions are estimates only and may not be exact measurements.