



**SOLD**

**UNDER CONTRACT - CALL JUSTIN 0404 713 845 TO DISCUSS YOUR PROPERTY**

Are you looking for a genuinely BIG unit with ocean views in a quality small block of eight with low body corporate and only a hop skip & jump to the beach. This is the one you've been waiting for!

Opposite North Kirra Patrolled beach, surf club, walking paths and bbq areas. Close to the vibrant Kirra cafe precinct, boutique shopping and of course some of the best surf breaks in the world.

Some Features:

- \* Ocean Views
- \* Spacious living area
- \* Two good sized rooms
- \* Separate kitchen with potential to open onto living area
- \* Separate laundry
- \* L shaped balcony - enough room for the BBQ
- \* 8.6m\* x 3m\* Remote Garage
- \* 1.8m\* x 4m\* Store Room off the garage with large window looking towards the ocean
- \* Body Corporate - \$2508\* p/a
- \* Water & Sewage - \$978.83\* p/a
- \* Council Rates - \$3133.17\* p/a

Add to your investment portfolio or live a life by the beach.

\*Approximate

Agent Profile: <https://www.atrealty.com.au/justinhaynes/>

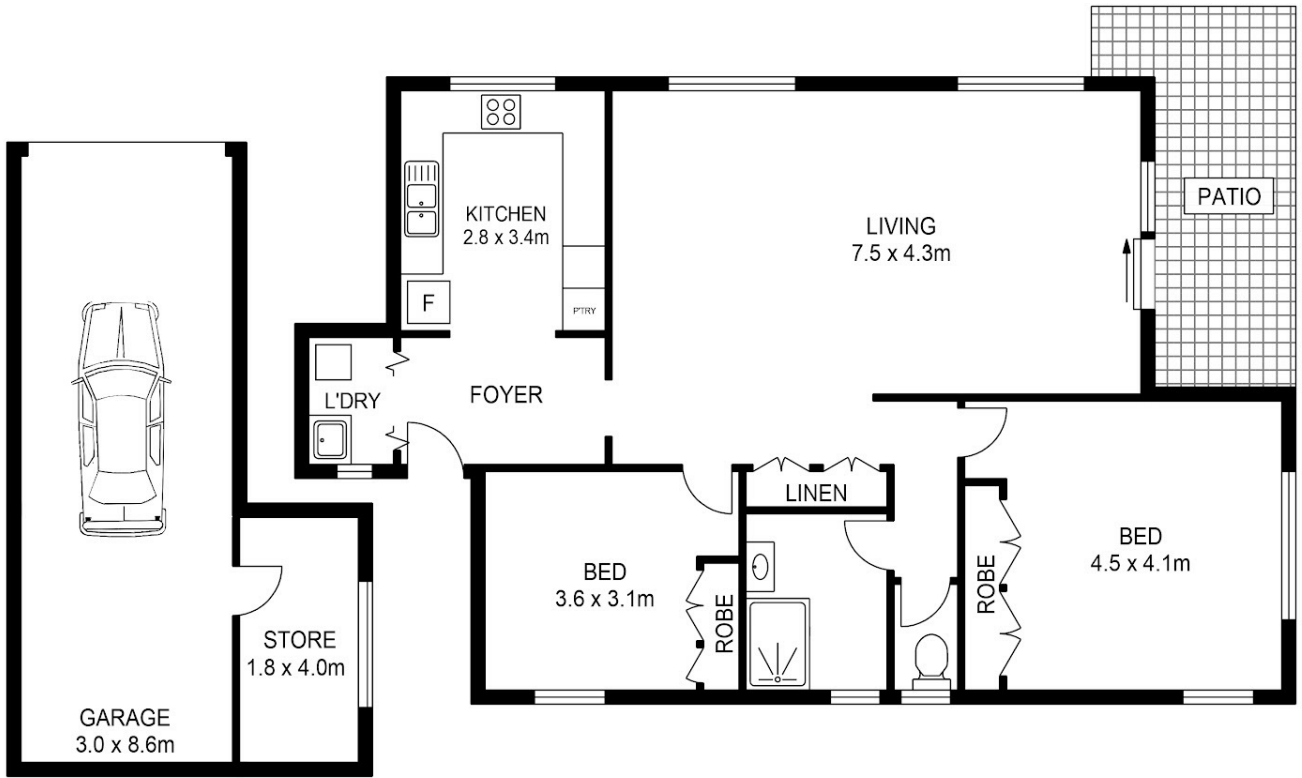
**2 BED | 1 BATH | 0 CAR**

**PRICE:**  
**\$600,000**

**OPEN FOR INSPECTION:**  
**N/A**



**Justin Haynes**  
**0404713845**  
justinhaynes@atrealty.com.au  
[www.atrealty.com.au](http://www.atrealty.com.au)



Scale in metres. Indicative only. Dimensions are approximate. All information contained herein is gathered from sources we believe to be reliable. However we cannot guarantee its accuracy and interested persons should rely on their own enquiries.

INTERNAL : 95 SQ.M.  
 GARAGE : 25 SQ.M.  
 OUTDOOR : 11 SQ.M.



1/16 Pacific Pde Bilinga



Disclaimer: Please note this floor plan is for marketing purposes and is to be used as a guide only. All dimensions are estimates only and may not be exact measurements.

**Justin Haynes**  
 0404713845  
 justinhaynes@atrealty.com.au  
[www.atrealty.com.au](http://www.atrealty.com.au)

