



SOLD

YOU'VE STRUCK GOLD NUMBER 1 IN ASHWOOD!

This prime corner block provides a wealth of opportunity with an exciting range of options! The original 3 bedroom home set on a very impressive 759 m2 (approx.) corner block with 59 meters of street frontage delivering endless scope and opportunities to the new owner.

Move in and enjoy this character filled home, land bank and tenant the home or build a new home or townhouse development (STCA)

This property is conveniently located within close proximity to Ashwood and Ashburton Shopping Villages, Chadstone Shopping Centre, numerous primary, secondary schools and Holmesglen TAFE. Safe tree lined streets lead to beautiful Gardiners Creek, which boasts a bicycle/walking trail and sporting facilities. This massive 759sqm block located in one of Melbournes most peaceful pockets, yet is only 14km from the CBD with easy access to Monash Freeway.

Your golden opportunity awaits!

3 BED | 1 BATH | 0 CAR

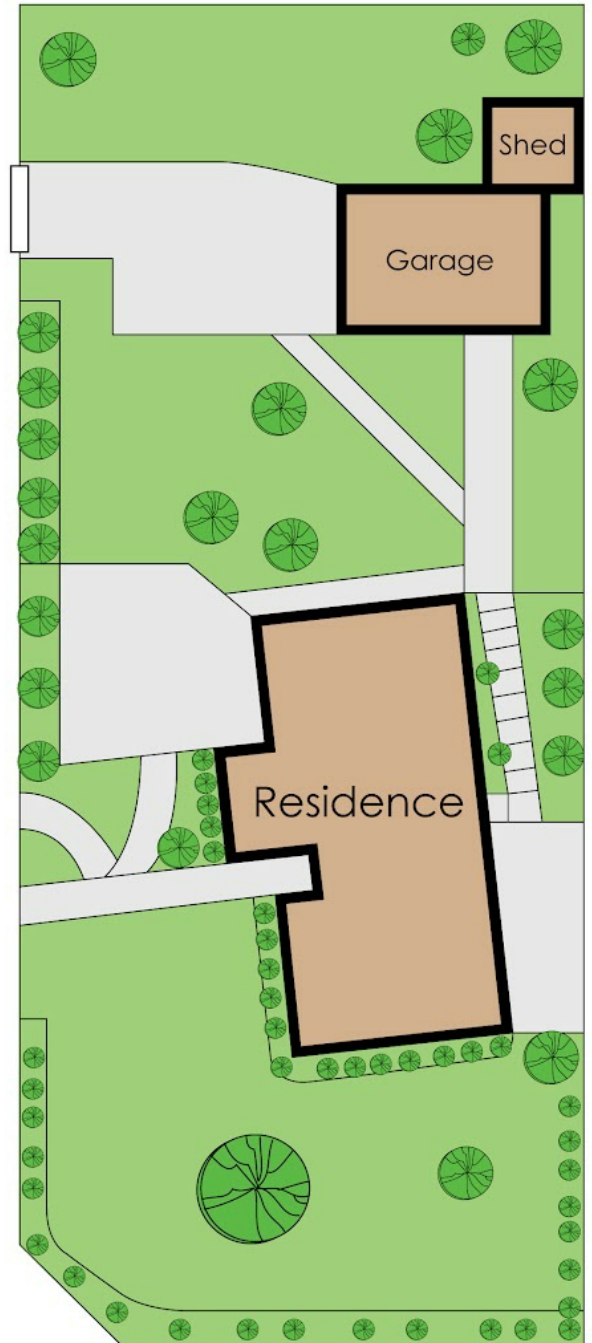
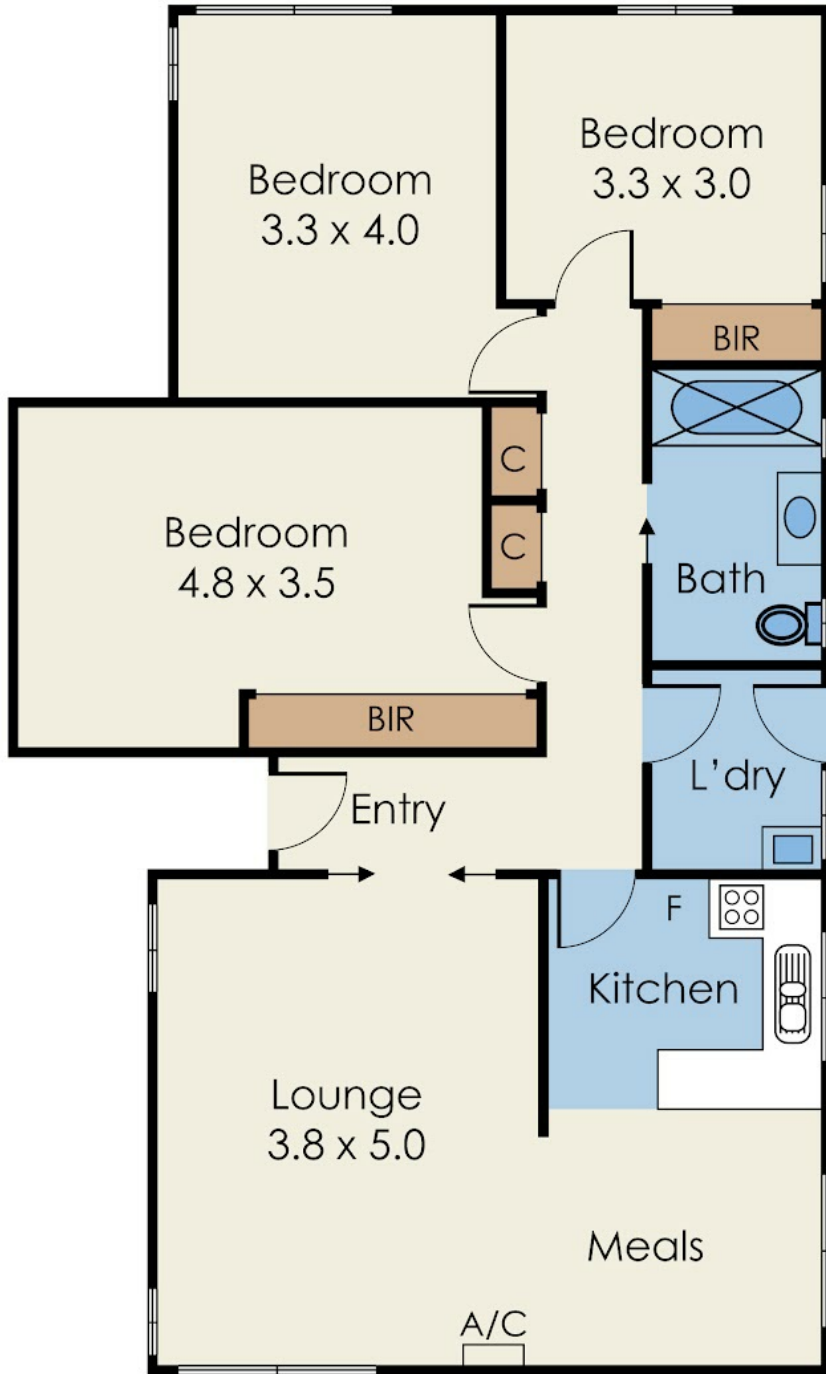
PRICE:
\$1,200,000

OPEN FOR INSPECTION:
N/A



Dennis Tana
0424583271
dennis.tana@atrealty.com.au
www.atrealty.com.au

1 Leonard Street, Ashwood



Disclaimer: Please note this floor plan is for marketing purposes and is to be used as a guide only. All dimensions are estimates only and may not be exact measurements.

Dennis Tana
0424583271

dennis.tana@atrealty.com.au

www.atrealty.com.au

@realty Not to Scale

Every care has been taken to verify the accuracy of details in this brochure. Prospective purchasers are requested to take such action as is necessary to satisfy themselves of any pertinent matters