



# SOLD

## LIGHT, BRIGHT AND SURE TO DELIGHT!

Perfectly positioned in a quiet location walking distance to Coral Park Primary School, is this immaculately presented unit. With only 3 on the block, this unit is an excellent opportunity to enter the property market at an affordable price, whether you are a first home buyer, empty nester downsizing or an astute investor. Freshly painted throughout, with brand new carpet, floating floors, and new window dressings, this property is ready to move into. On offer are 2 bedrooms, the master bedroom with walk through robe and semi ensuite, with the second bedroom having built in robes. There is a functional colonial pine kitchen with gas hot plates, electric wall oven and rangehood with an adjoining eat in meals area, which flows through to the cosy lounge with the comfort of split system heating and cooling. Outside there is a secure and private, low maintenance court yard, and a bonus 3 car garage, ideal for the car, and all your boys toys!

INSPECTION WILL DELIGHT THE FUSSIEST OF BUYERS!

2 BED | 1 BATH | 0 CAR

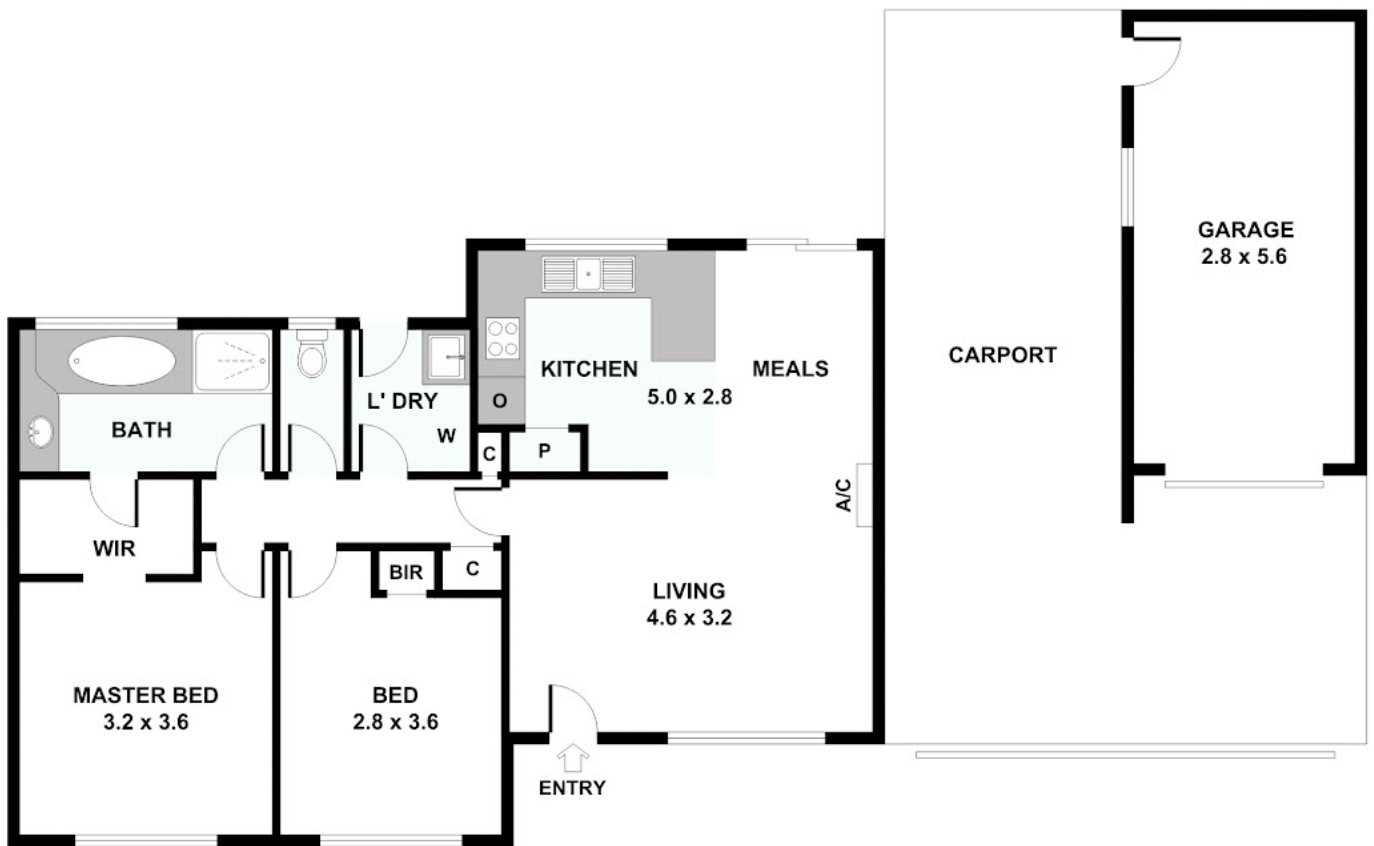
PRICE:  
\$325,000

OPEN FOR INSPECTION:  
N/A



**Angela Brosche**  
angelabrosche@atrealty.com.au  
[www.atrealty.com.au](http://www.atrealty.com.au)

# 2/55 Leopold Crescent, Hampton Park



Disclaimer: Please note this floor plan is for marketing purposes and is to be used as a guide only. All dimensions are estimates only and may not be exact measurements.

Please note: All stated dimensions are approximate only. Particulars given are for general information only and do not constitute any representation on the part of the vendor or agent.