



**SOLD**

## WHAT AN AWESOME OPPORTUNITY IS THIS!

Presenting to the market a fabulous full brick home on a massive 900m2 with genuine side access and room for a pool and or shed.

Internal stairs lead you to the hub of the home, featuring a fabulous open plan family space and a fantastic newly renovated galley style kitchen. The design is warm and welcoming, with gorgeous white cabinetry complemented by a beautiful tile splashback and matching bench tops. The household chef will be impressed with the large 900mm stainless steel freestanding electric oven with matching canopy rangehood and dishwasher. The island bench offers the perfect spot to grab a quick bite to eat, complete homework and to catch up on the events of everyone's day.

The dining area opens onto a very generous covered deck, which is perfect for entertaining. This space ensures you have the freedom to enjoy the warm evenings cooking BBQs while laughing and chatting with family and friends.

Polished hardwood timber floors are a feature throughout the second level, where you will also find three bedrooms. The master bedroom is air-conditioned and features a built-in robe, ceiling fan and access to the balcony. Bedroom two also offers a built-in robe and ceiling fans.

On the ground level, there is space galore. The kids will love the massive rumpus room and indoor play fort. The double garage is air-conditioned and is currently being used for multiple purposes, such as a home gym, movie room, and there are even built-in work benches.

The backyard includes a second alfresco entertaining area, garden shed, cubby house, greenhouse, garden beds and fruit trees. Most importantly, there is side access and more than enough room for a shed or pool or maybe both.

Don't miss this opportunity, call Lacey today to arrange an inspection.

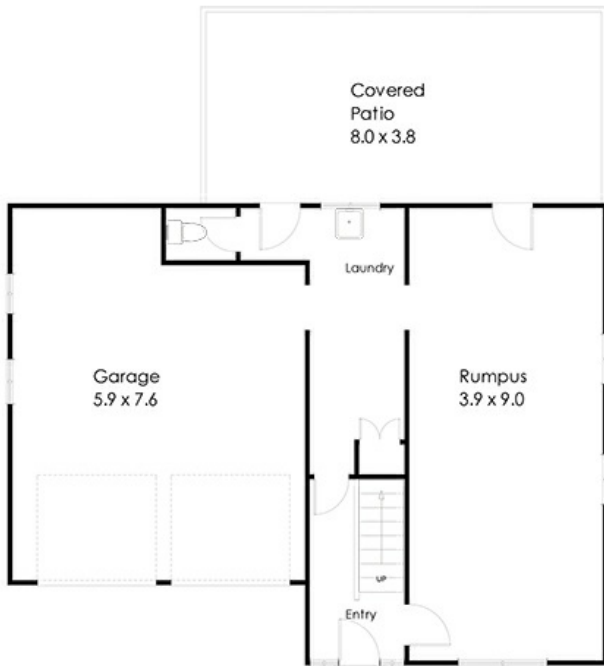
**3 BED | 1 BATH | 0 CAR**

**PRICE:**  
**\$400,000**

**OPEN FOR INSPECTION:**  
**N/A**



**Lacey Roberts**  
**0417785412**  
laceeroberts@atrealty.com.au  
[www.atrealty.com.au](http://www.atrealty.com.au)



Lower Level



Upper Level

Whilst every attempt has been made to ensure the accuracy of the floor plan contained here, measurements of doors, windows, rooms and any other items and structures are approximate and no responsibility is taken for any error, omission or mis-statement. Bathroom and kitchen fittings, outdoor and door types and laundry appliances and windows are taken and approximate the actual fittings installed.  
 This plan is for illustrative purposes and should be used as such by any prospective buyer.  
 Plan drawn by Eagle Eye Photography Service: www.eagleeyemq.com.au Copyright 2017. All rights reserved.  
 No reproduction without license, contact photographer for more information.

3 Gracemere Street Morayfield 4506



Disclaimer: Please note this floor plan is for marketing purposes and is to be used as a guide only. All dimensions are estimates only and may not be exact measurements.

Lacey Roberts  
 0417785412  
 laceeroberts@atrealty.com.au  
[www.atrealty.com.au](http://www.atrealty.com.au)

