



SOLD

GORGEOUS HOME - 100 METRES TO THE WATER

This a beautiful, light and bright 26 square home built by Dwyer Quality Homes on a large 775sqm block close to the local shopping centre and transport. Just two minutes' walk will take you to the Pumicestone Passage where you will find the wading birds sanctuary, beach, boat ramp, barbeque facilities, children's playgrounds and more. The sunsets over the water to the Glass House Mountains are something to behold!

The home has been recently renovated with quality fittings and fixtures so nothing to do here! With four bedrooms, open plan kitchen/living/dining, separate formal living/dining, two bathrooms and double garage this great home is waiting for a family or those retirees making their sea change. The home has been placed on the block so as to allow for wide side access for a caravan or mobile home.

The kitchen has been totally renovated with new stainless steel appliances and Caesar stone bench tops. All of the bedrooms in this home are a good size, with the master being king size with walk in wardrobe and en-suite. Flowing outdoors from the open plan living areas is a covered outdoor living area looking over a lovingly tended garden with lush green lawns. There is a plenty of space here for a swimming pool leaving lots of room for the children or pets to play.

Look at these additional features:

- Reverse cycle air conditioning & ceiling fans
- Neutral carpets (new) and tiles
- Wide refrigerator space with plumbing
- Security system
- Crimsafe screens to front of home
- LED lights
- Smeg appliances
- Cedar blinds
- Spear pump & auto watering system
- 3 x 2.5 metre shed (water tight)
- Pay TV points

4 BED | 2 BATH | 0 CAR

PRICE:
\$647,500

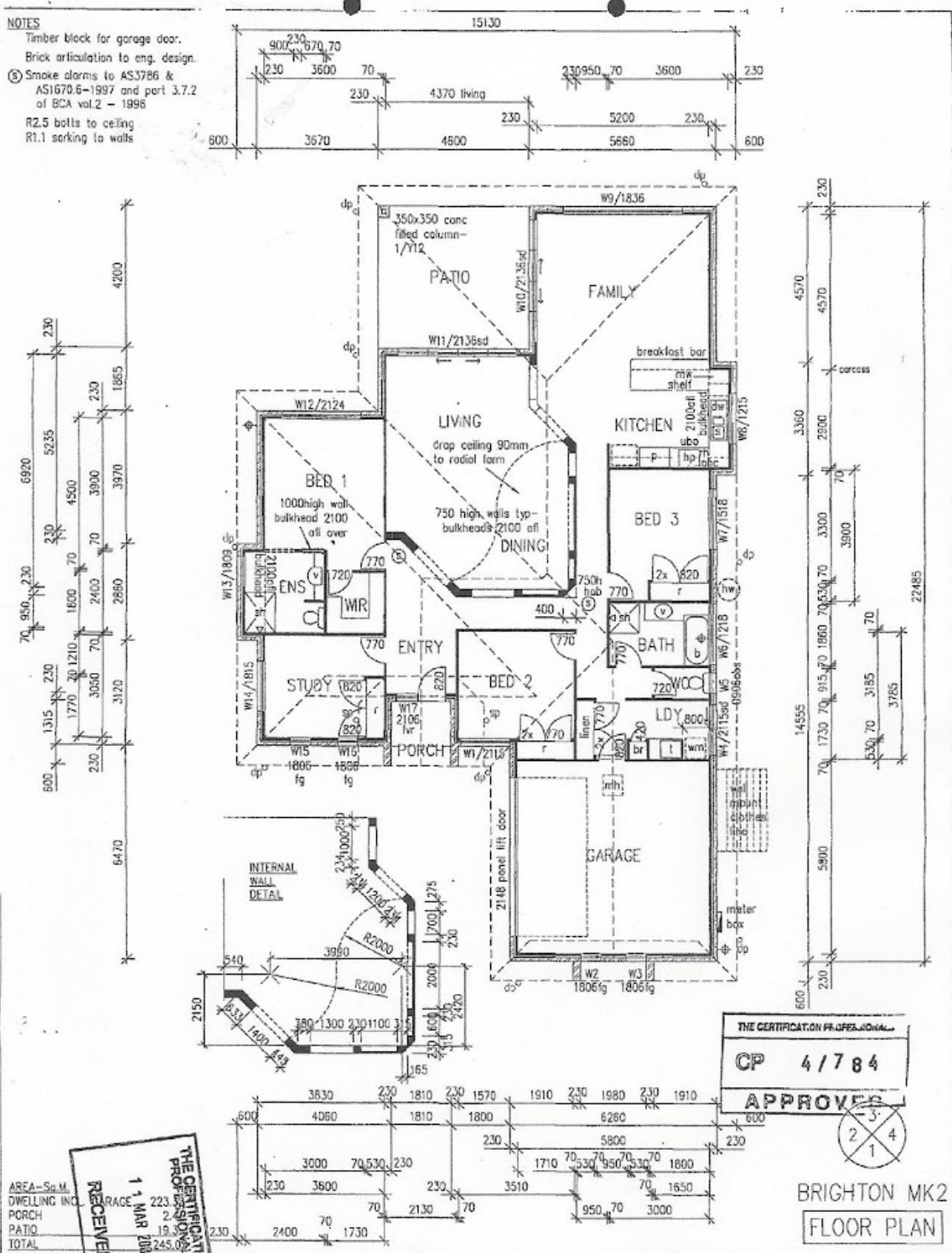
OPEN FOR INSPECTION:
N/A



Geoff and Rose Tutt
0414230130
 geoff@atrealty.com.au
www.atrealty.com.au

While every care is taken to ensure the accuracy of this data, Brighton MK2 Floor Plan Council makes no representations or warranties about its accuracy, reliability, completeness, or suitability for any particular purpose and disclaims all responsibility and all liability (including without limitation liability in negligence) for all expenses, losses, damages, or consequential damages, and cost which might be incurred as a result of the data being inaccurate or incomplete in any way and for any reason.

- NOTES**
- Timber block for garage door.
 - Brick articulation to eng. design.
 - Smoke alarms to AS3786 & AS1670.6-1997 and part 3.7.2 of BCA vol.2 - 1996
 - R2.5 bolts to ceiling
 - R1.1 sarking to walls



AREA - S.M.
 DWELLING INC. 223.00
 PORCH 19.00
 PATIO 19.00
 TOTAL 506.00

DWYER QUALITY HOMES
 256 Nicklin Way, Kewanna, Waters, Qld. 4575
 Phone (07)5436 7900 • Fax (07)5493 1988
 Internet : www.dqh.com.au

PROPOSED DWELLING FOR :
J.L. & L.H. WHITE
 of LOT 116 FULMAR CRESCENT

Date	Amendments	Scale 1:100	Job No
4.3.04	revised routine	Drawn GD	5315
			Sheet No

Disclaimer: Please note this floor plan is for marketing purposes and is to be used as a guide only. All dimensions are estimates only and may not be exact measurements.

Geoff and Rose Tutt
 0414230130
 geoff@atrealty.com.au
 www.atrealty.com.au



