



SOLD

ISLAND PARADE LIFESTYLE – ON THE WATER!

This is a spectacular 45 square architecturally designed ten year old home built on an 842 sqm block with 30 metre canal frontage located only eight minutes by boat to the deep waters of the Pumicestone Passage.

As you walk through the secure portico style entry into this light and airy home with high ceilings, you will be delighted at the views across the Balinese water feature to the water. All living areas overlook the stunning wet-edge pool and the water.

The home features open plan living/dining/kitchen, media room with projector and screen, study, four king size bedrooms, three bathrooms, powder room and double garage. This property has a guest bedroom with its own en-suite so ideal for accommodating family and friends.

The kitchen is a chef's oasis and boasts quality Smeg appliances including dishwasher, 90cm wide oven, built in microwave oven, espresso bar, large plumbed refrigerator accommodation and beautiful South African Granite benchtops.

Leading out from the living areas you will find two large undercover entertainment areas with one overlooking the swimming pool and one overlooking the canal. An outdoor sound system has also been installed for those who enjoy listening to music while enjoying outdoor living.

Look at these extra features:

- Landscaped gardens
- Private courtyard entrance
- Ducted air conditioning & ceiling fans
- Vacuum maid
- Security/intercom system
- Garage with extra height and length for 4-wheel drive
- Storage in garage
- 12 metre pontoon with electricity and water
- Water tanks
- 5kw solar power
- Spear pump
- Garden shed

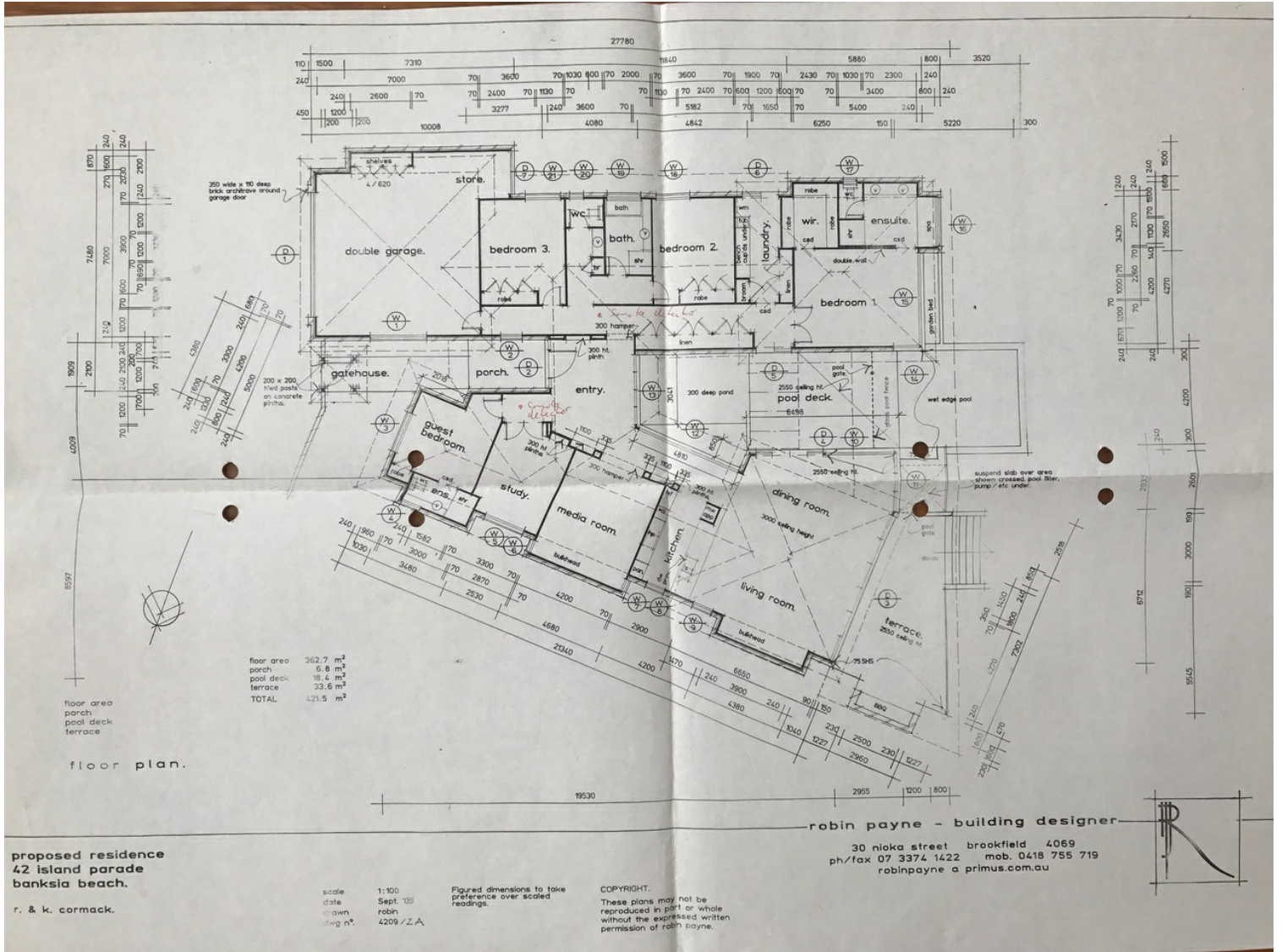
4 BED | 3 BATH | 0 CAR

PRICE:
\$1,000,000

OPEN FOR INSPECTION:
N/A



Geoff and Rose Tutt
0414230130
 geoff@atrealty.com.au
www.atrealty.com.au



Disclaimer: Please note this floor plan is for marketing purposes and is to be used as a guide only. All dimensions are estimates only and may not be exact measurements.