



**SOLD**

## \*LARGE LOWSET FAMILY HOME OVERLOOKING THE CANAL

The spacious four-bedroom home was made for enjoying with a large covered and paved outdoor entertaining area that overlooks the canal, a huge jetty with easy boat access and an in-ground swimming pool.

Inside, the fully equipped kitchen with double oven, separate electric stove top and double sink has ample storage and bench space to keep any home chef happy. The open plan kitchen looks on to the spacious and bright casual dining and lounge area, which enjoys a beautiful view of the canal.

There is also a large separate dining and lounge room for more formal occasions. Extra glass panels and high ceilings in both of the living areas allows for an abundance of natural light and the breeze from the canal to flow through the well proportioned home.

The four carpeted bedrooms all have built in mirrored robes with the master featuring a huge bathroom with spa. The choice is yours to convert one of the bedrooms into a home office if you please.

The home also features a huge three-car garage, or two-cars and a boat or van. With a prime and peaceful spot on the canal, this gorgeous family home is ready to move into and be enjoyed.

Features:  
899m2 block  
Large jetty  
4 bedrooms  
2 bathrooms  
Formal lounge and dining  
Casual lounge and dining  
3-car garage

4 BED | 2 BATH | 0 CAR

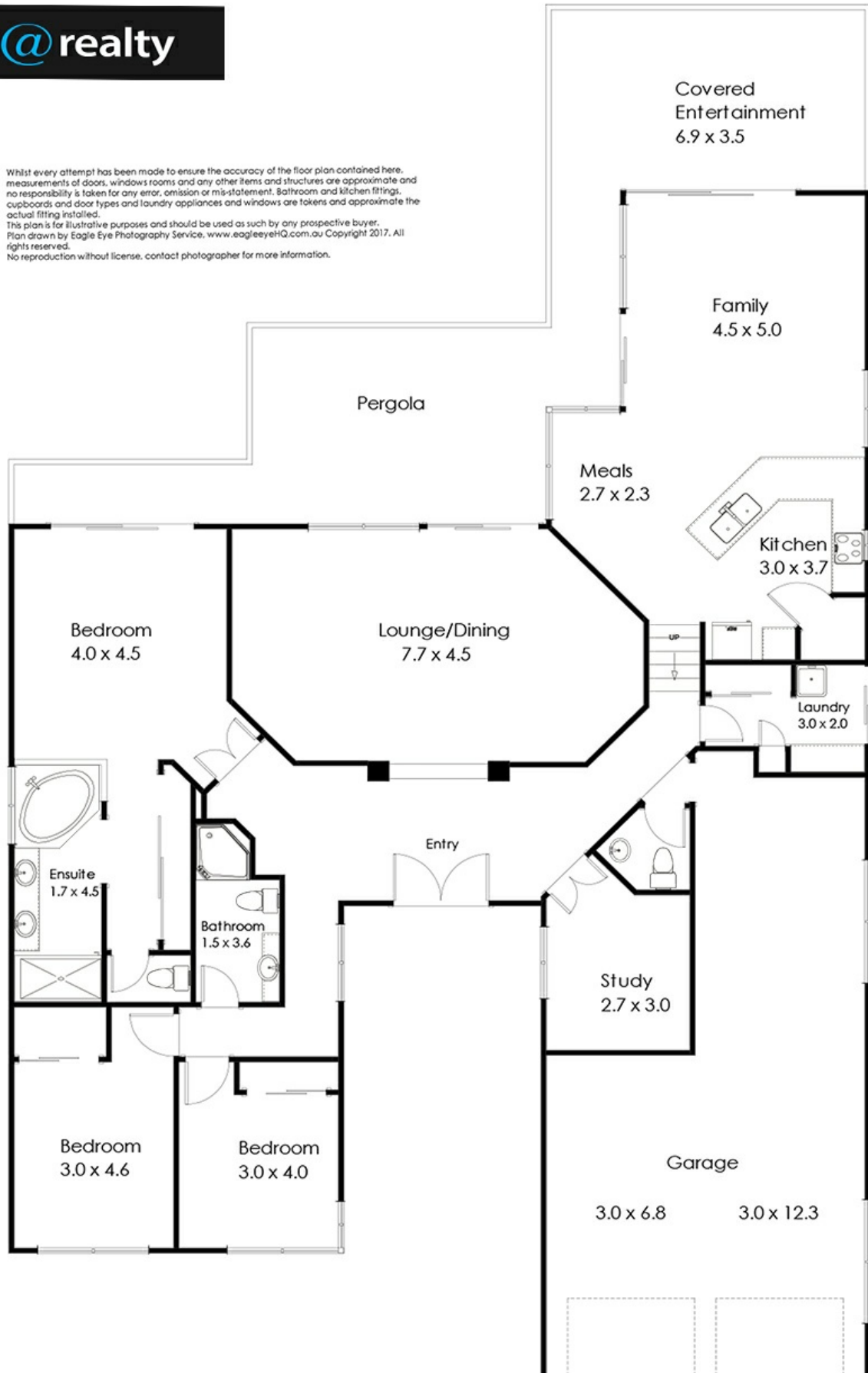
PRICE:  
\$700,000

OPEN FOR INSPECTION:  
N/A



**Gayle Twigg**  
**0418746497**  
gayle@atrealty.com.au  
[www.atrealty.com.au](http://www.atrealty.com.au)

Whilst every attempt has been made to ensure the accuracy of the floor plan contained here, measurements of doors, windows rooms and any other items and structures are approximate and no responsibility is taken for any error, omission or mis-statement. Bathroom and kitchen fittings, cupboards and door types and laundry appliances and windows are tokens and approximate the actual fitting installed.  
This plan is for illustrative purposes and should be used as such by any prospective buyer.  
Plan drawn by Eagle Eye Photography Service, www.eagleeyeHQ.com.au Copyright 2017. All rights reserved.  
No reproduction without license, contact photographer for more information.



Disclaimer: Please note this floor plan is for marketing purposes and is to be used as a guide only. All dimensions are estimates only and may not be exact measurements.

27 Voyager Drive Banksia Beach 4507