



FOR SALE

NORTH EAST FACING SPACIOUS APARTMENT

Located within the immaculate Oceana On Broadbeach Pacific Tower on the 3rd floor the 'Ocean Front' apartment offers the perfect lifestyle option. With only 3 apartments per floor each has generous indoor floor space and access to the balcony from each room. Ideal for those seeking a low maintenance property in a convenient location or perhaps looking for a solid investment with great returns.

With nearby developments underway Oceana On Broadbeach is perfectly situated to gain the benefit of the future shopping and dining precincts. Take a short stroll with beach access through the rear gate of the pool, spa and BBQ area. The fully refurbished Broadbeach Bowls Club, famous for its great meals is directly opposite, Oceana is only a short walk from the famous attractions of vibrant Broadbeach.

Additional Features Include:

- NE aspect with Ocean Views
- Large main bed with ensuite, separate bath and double sink
- Walk-in robe in master
- Balcony access from every room
- Massive living area
- Separate Laundry
- A/C to every room
- Ceiling fans
- Approx 156sq.m
- Electric Hot Water system
- Electric Cooktop
- Resort facilities, gym, sauna, pool, spa, bbq's
- Beach Access
- Selling fully furnished

2 BED | 2 BATH | 0 CAR

PRICE:
\$710,000

OPEN FOR INSPECTION:
N/A



Justin Haynes
0404713845
justinhaynes@atrealty.com.au
www.atrealty.com.au

70/100 OLD BURLEIGH ROAD BROADBEACH

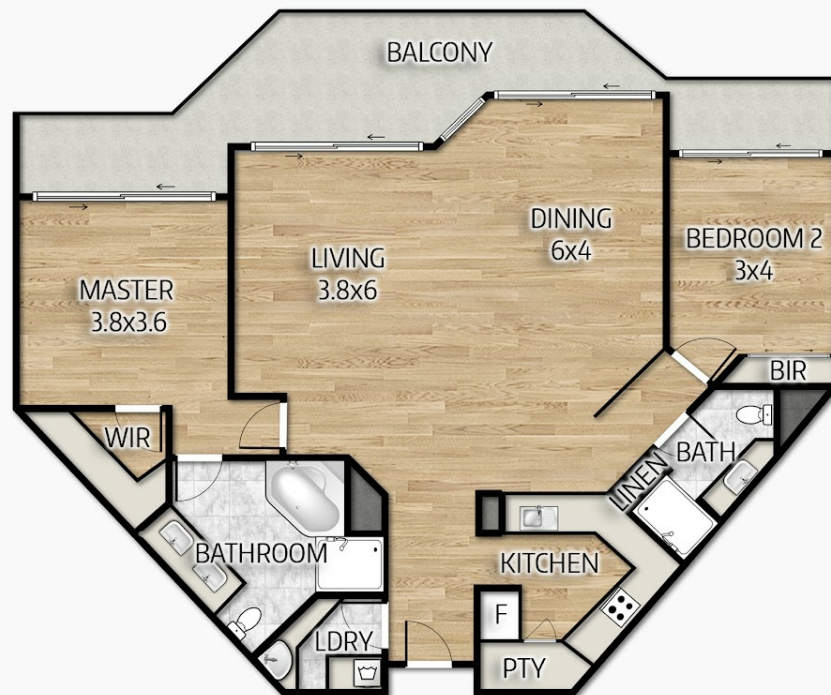


BED: TWO

BATH: TWO

CAR: ONE

AREA: 156m²



JUSTIN HAYNES @REALTY

0404 713 845

All measurements are approximate and for illustrative purposes only.
It should not be considered absolutely accurate.
Interested parties should rely on their own enquiries.

Disclaimer: Please note this floor plan is for marketing purposes and is to be used as a guide only. All dimensions are estimates only and may not be exact measurements.