



FOR SALE

BRAND NEW 2 BEDROOM LUXURY APARTMENTS - LIVE IN OR RENT OUT!!

Local area Agent Ian Partridge continues to deliver the very best that Petrie has to offer, Now LUXURY LIVING AT "PETRIE ON THE PARK."

Plan for the future! Ideal modern accommodation for students and staff, close to the Future Petrie University Campus and new town centre. (see: <https://www.moretonbay.qld.gov.au/the-mill/pda/>)

You will relish being able to escape from the hustle and bustle to your park front property and enjoy everything that this lifestyle has to offer. Petrie on the Park offers a range of Ground Floor Apartments with Court Yard and Spectacular River and Parkland Views, Set in a spectacular and natural parkland setting with a resort-style pool, close to walking tracks, shopping centre with a Woolworths, Post office, fast food outlets etc (385 metres) and Petrie train station (984 metres). Petrie State school is a short walk as is Mount Maria High School and Our Lady of the Way Catholic School.

You can now Enjoy security, luxury and tranquillity living in this new boutique park front estate just 35 minutes' commute to Brisbane CBD and just minutes away from fine dining, shopping, schools and transport.

Escape from the hustle and bustle to your home by the park and enjoy everything park front living has to offer. Enjoy the Huge Deck overlooking the North Pine River and Sweeny Reserve. Apartment 9 @Petrie on the Park offers Ground Floor Living with Views, (Also available are 1st Floor Apartments), overlooking the River and Reserve or the private Lagoon, these are in a spectacular and natural parkland setting.

This is an outstanding opportunity to live in or as an easy investment opportunity with low body corporate fees and Exceptional rental returns.

Apartment Features:

- * Spacious open plan luxury living
- * Ensuite and main bathroom
- * Split system air conditioning in Master and Living Area

2 BED | 2 BATH | 1 CAR

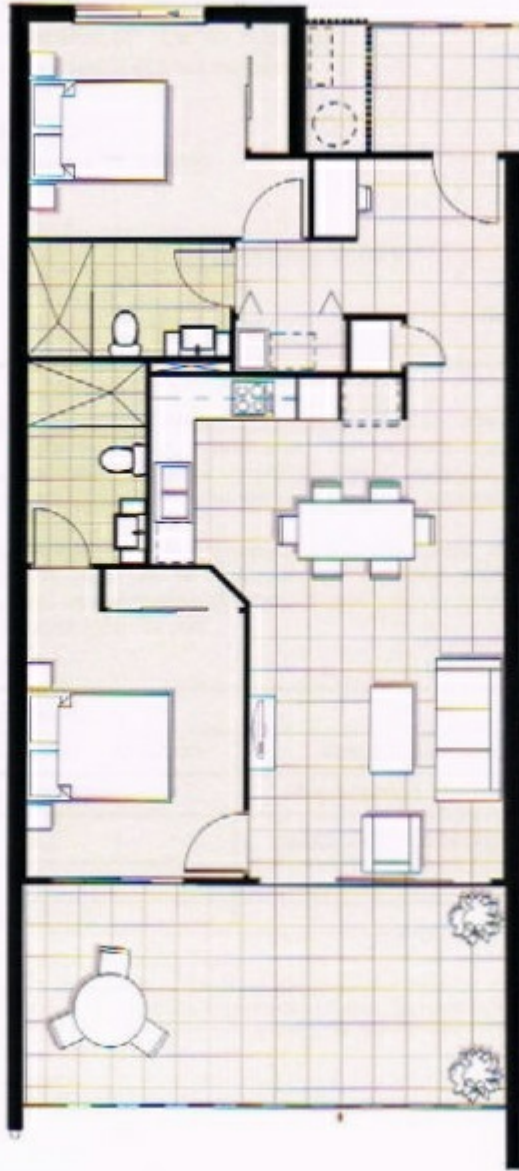
PRICE:
338,000

OPEN FOR INSPECTION:
N/A



Ian Partridge
0415733349

ianpartridge@atrealty.com.au
www.atrealty.com.au



Disclaimer: Please note this floor plan is for marketing purposes and is to be used as a guide only. All dimensions are estimates only and may not be exact measurements.