

FOR SALE

LUXURIOUS, MODERN FAMILY HOME

Behind this home's modern façade is a luxurious residence characterised by the impressive attention to detail. From crafted ironwork balustrades to quality light fittings and a clever use of space, this family home is will impress even the most astute buyer.

Living is spread over two levels to make the most of the space available but in true luxurious fashion, the upper-level is dedicated to the large master suite. Reminiscent of a high-end hotel, you can enjoy features such as a sitting area, large built-in closet, a designer ensuite with bath and access to a private balcony. There are two more guest rooms located on the lower-level, both feature built-in robes and have access to the main bathroom with bath.

The kitchen is located in the heart of the home, designed to be the hub of family life. With features such as gas cooking, a dishwasher and beautiful timber-style cupboards, catering for family and friends will be a breeze.

An open-plan dining space with views over the pool and an open-plan living room that flows to the rear deck, sit either side of the kitchen. Here, pitched ceilings and a neutral colour scheme create a space that is bright and welcoming.

There is also a purpose-built study with built-in desk, a casual living space at the front of the home, an all-weather courtyard, a private rear deck with plenty of room for a barbecue and a stunning lap pool that runs most the length of the home.

All of this is set on a 312sqm block within walking distance from waterfront cafes and restaurants. Major shopping centres, schools and a range of services and amenities are also within easy reach.

3 BED | 2 BATH | 0 CAR

PRICE:

Sold

OPEN FOR INSPECTION:

N/A

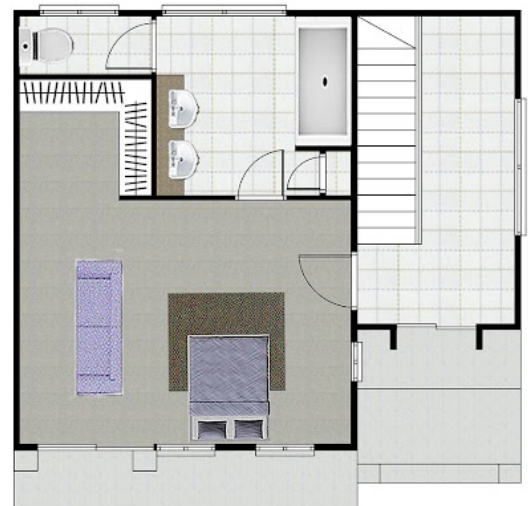
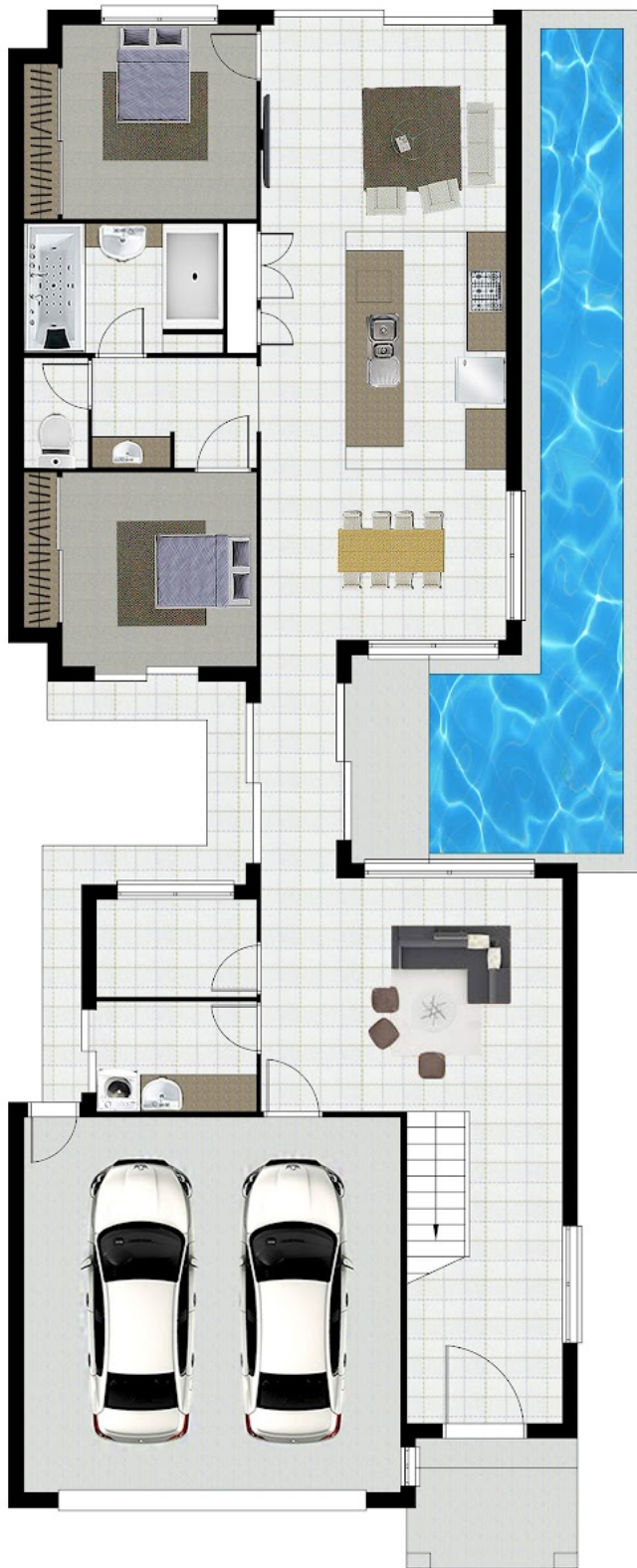


Paula Anderson-Stevens

0431847986

aspex@atrealty.com.au

aspexproperty.com.au



Disclaimer: Please note this floor plan is for marketing purposes and is to be used as a guide only. All dimensions are estimates only and may not be exact measurements.

Buyers should make their own enquiries and consult the information plan in the disclosure documents for further details. Purchases are subject to contract terms. Floor Plan drawn by iPhotorealestate.

6 Trinidad Street, Kawana Island

Paula Anderson-Stevens

0431847986

aspex@atrealty.com.au

aspexproperty.com.au

@realty