



FOR SALE

BLOCK & BRICK BEAUTY!

This brick beauty is sited on a 726m² (approx) north facing block and is bursting with a bounty of opportunities! Add to your property portfolio, build your dream home, prospect towards a Luxury Town House Redevelopment (STCA) or simply enjoy the home in its current beauty.

- * Comprising of a spacious 4 bedroom family home in well-kept original condition
- * Renovated light filled Kitchen with adjoining dining area
- * Large backyard with deck plus a double lock-up garage
- * Separate Lounge with open fireplace
- * Ducted Heating and Evaporative Cooling
- * Separate bath, shower and W/C
- * Wooden floorboards

This home is situated in a high demand location within the coveted Mount Waverley Secondary College catchment area, Huntingtower, Wesley College, primary schools, public transport, close proximity to parks and close to both Syndal and Mt Waverley Village. Take full advantage of this sought-after location and offering, you will be sure to reap remarkable rewards with your bounty!

4 BED | 1 BATH | 0 CAR

PRICE:

Contact Agent

OPEN FOR INSPECTION:

N/A



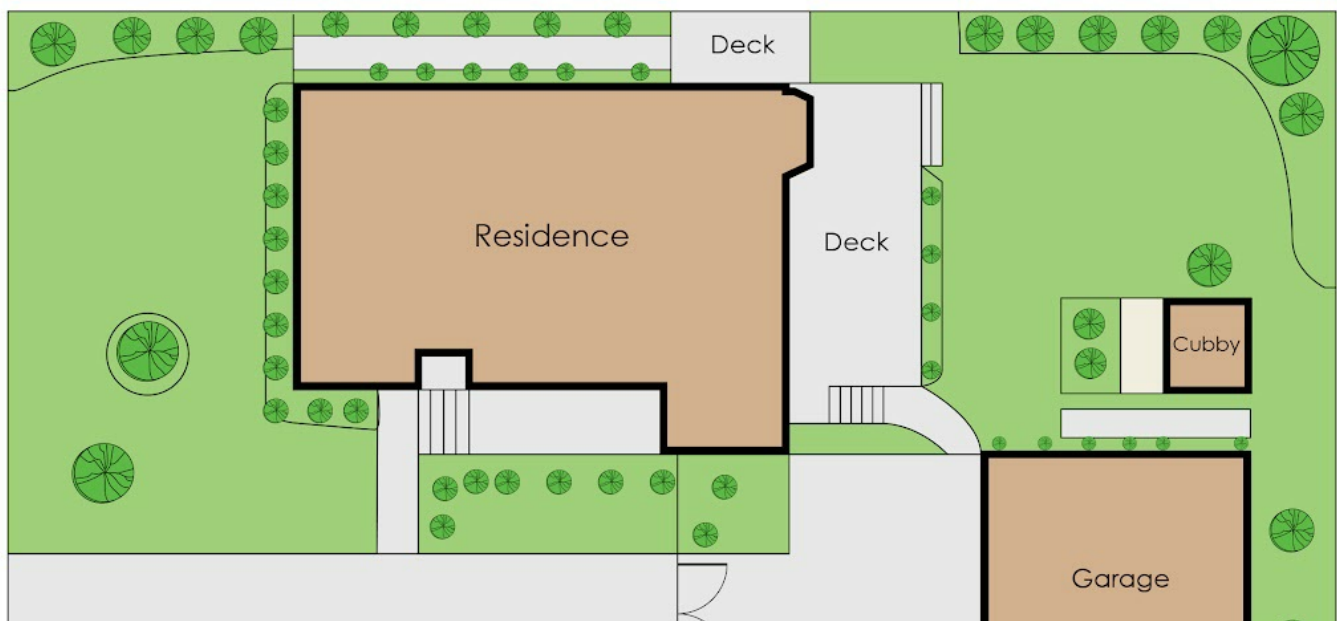
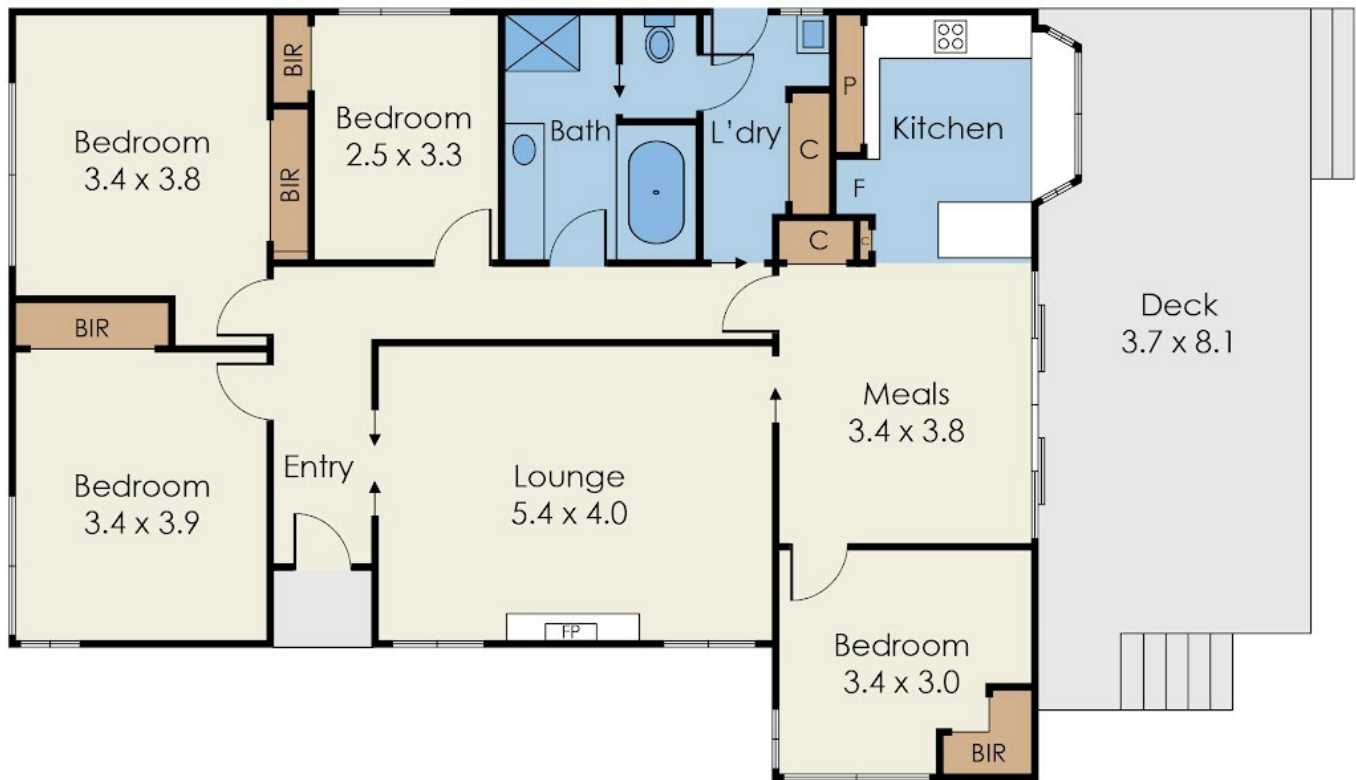
Dennis Tana

0424583271

dennis.tana@atrealty.com.au

www.atrealty.com.au

3 Gowan Road, Mount Waverley



Disclaimer: Please note this floor plan is for marketing purposes and is to be used as a guide only. All dimensions are estimates only and may not be exact measurements.

Dennis Tana

0424583271

dennis.tana@atrealty.com.au

www.atrealty.com.au

@realty

Not to scale

Every care has been taken to verify the accuracy of details in this brochure. Prospective purchasers are requested to take such action as is necessary to satisfy themselves of any pertinent matters