

**SOLD**

**CONTEMPORARY , WITHIN 7KM FROM CBD  
CONTACT AGENT TO INSPECT**

On offer is this Magnificent architect designed contemporary family home with side access in sought after Spark Hill Estate, Stafford. Just over 1 year young and only approximately 7.0km to city.

Take out the hassle and time it takes to build and make this home yours today. Designated living and entertaining spaces seamlessly connect to create a versatile floor plan that caters to the entire family, combining crisp neutral tones. Contact Beverley today to view this home. Don't delay. Get in and be settled before Christmas to start the New Year in your new home.

Excellent list of features includes:

Enter Ground Level:

- Informal relaxing conversation area as you enter through oversized wooden door.
- Large laundry with abundance of storage
- Home office suite/ Study zone for the kids
- Home Theatre ready to relax and watch a movie
- Bedroom with ensuite and 2 way access
- Sleek contemporary fully fitted designer kitchen with stainless steel appliances, gas cooktop, stone bench tops, plumbed fridge and butler's pantry
- Formal dining and lounge
- Covered Outdoor entertainment area complete with hot + cold water and drainage connected for an outside Kitchen
- Extra Wide gated side access with approx. 4 mt to accommodate the space for DAD's toys. Boats, Jet Ski or Caravan
- Landscaped with enough place for a pool

2nd Level:

- King Master bedroom with His & Hers walk in robes.
- Ensuite with large shower and double vanity
- Children's retreat and a balcony
- 2 Bedrooms with built ins
- Separate toilet
- Family bathroom

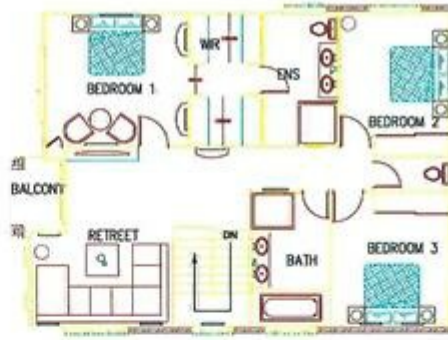
**4 BED | 3 BATH | 2 CAR**

**PRICE:**  
\$1,065,000

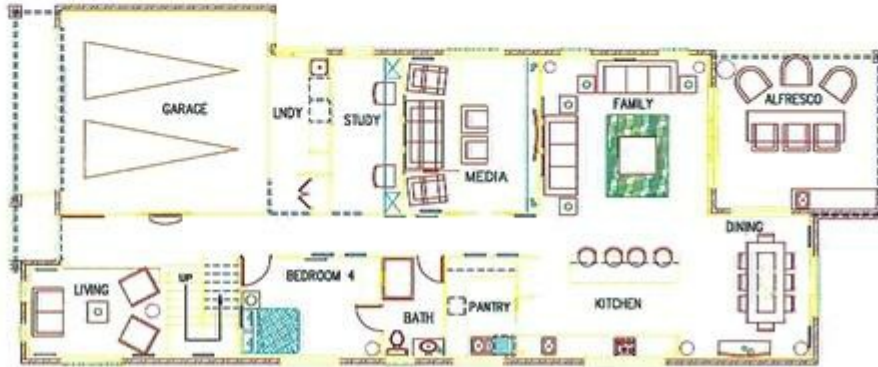
**OPEN FOR INSPECTION:**  
N/A



**Beverley Gibbons**  
**0420807083**  
beverley.gibbons@atrealty.com.au  
[www.atrealty.com.au](http://www.atrealty.com.au)



UPPER FLOOR INTERIOR LAYOUT OPTION 1



LOWER FLOOR INTERIOR LAYOUT OPTION 1

Disclaimer: Please note this floor plan is for marketing purposes and is to be used as a guide only. All dimensions are estimates only and may not be exact measurements.