

4B/2-6 HURTLE SQUARE, ADELAIDE, SA, 5000



## FOR LEASE

### BOUTIQUE CITY LIVING OVERLOOKING HURTLE SQUARE

Securely situated on the second level of this iconic low rise development is this sophisticated apartment comprising a spacious open plan living area designed to maximise both light and space. The living room has sliding doors leading out to an undercover entertaining area with views over the tree studded park and the buzz of the city below. Floor to ceiling windows in the dine make the most of the city and park views. The superbly appointed kitchen features a stainless steel Smeg gas cooktop and electric oven, ample quality cabinetry, built in dishwasher and black granite bench tops. There are three bedrooms with the master featuring direct access to a private terrace, extensive built in robes, stunning ensuite bathroom with marble floor tiles, dual vanities, bath and separate shower. The main bathroom takes advantage of the stunning architectural lines that make these apartments unique. Other features include ducted heating and cooling, intercom access through the front entry, foyer with elevator, secure under cover parking with internal access and a lock up storage cage.

- \* Please note this property is being leased unfurnished
- \* All water and gas charges are included in the rent

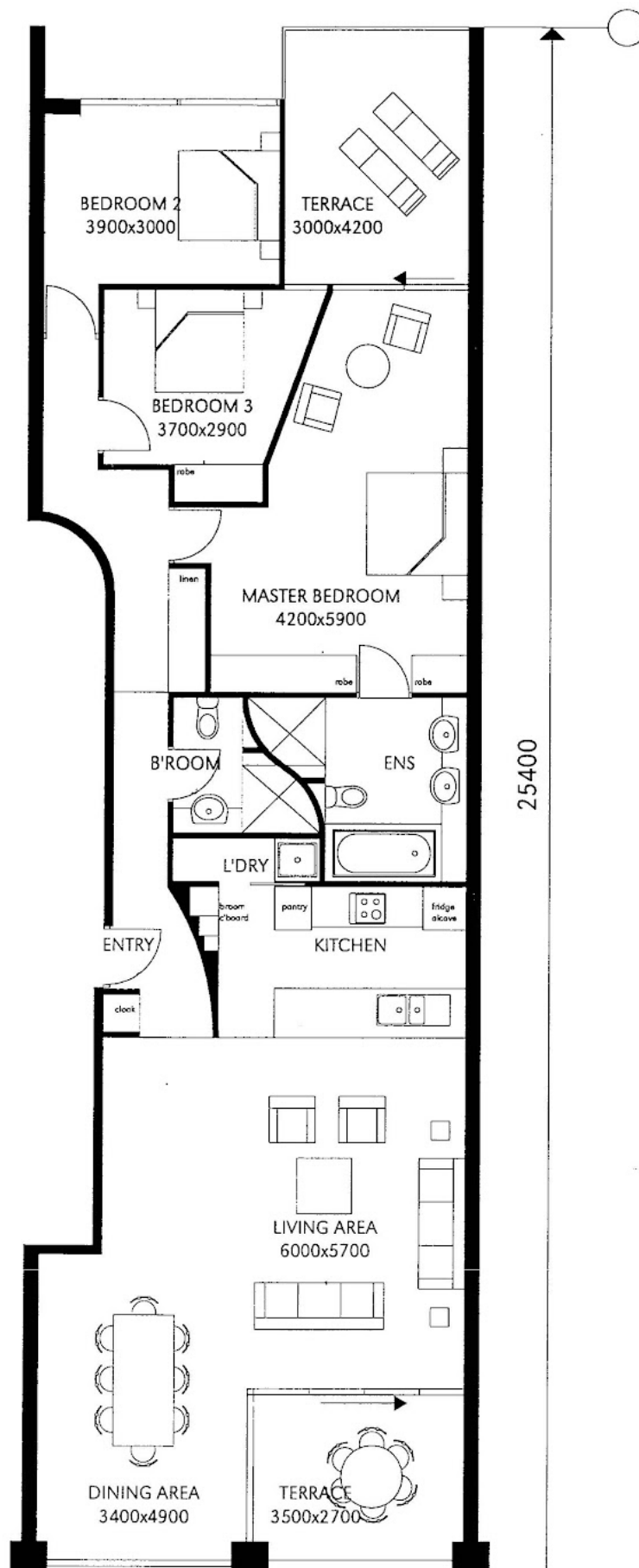
3 BED | 2 BATH | 1 CAR

PRICE:  
\$650 per week

OPEN FOR INSPECTION:  
N/A



**Andrew Giles**  
0414696936  
gilesproperty@atrealty.com.au  
[www.atrealty.com.au](http://www.atrealty.com.au)  
RLA: 269823



25400

Disclaimer: Please note this floor plan is for marketing purposes and is to be used as a guide only. All dimensions are estimates only and may not be exact measurements.