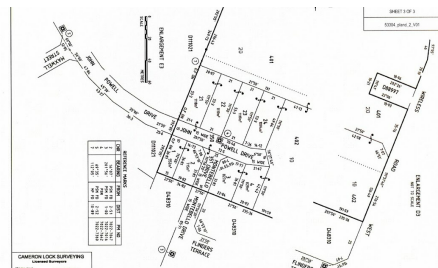


0 JOHN POWELL DRIVE MOUNT GAMBIER



FOR SALE

WESTERN AREA

- * Level allotment of 552m2
- * 15 metre frontage x 36.81 metre depth
- * Close to schools and shops
- * Services available
- * Includes colorbond fencing
- * Priced at \$85,000

0 BED | 0 BATH | 0 CAR

PRICE:
\$85,000

OPEN FOR INSPECTION:
N/A



Allen Smith
0419869854
allen.smith@atrealty.com.au
www.atrealty.com.au
RLA: 269823