

FOR SALE

PRICE CHANGE...OWNERS WANT IT SOLD...STYLISH CONTEMPORARY 3 BED 2 BATH APARTMENT-HUGE ENTERTAINMENT

Enjoy Queensland's alfresco lifestyle in this stylish contemporary 3 bedroom apartment that has been designed to allow a seamless flow of indoor and outdoor living. With a huge east-facing balcony, generous air-conditioned light filled open-plan living areas and a large kitchen the apartment is perfect for anyone who loves the alfresco lifestyle.

Located on the first level in a small boutique block of 6 a short walk to the train station & bus, restaurants & coffee shops at your doorstep along with easy access to Brookside Shopping Centre.

- Generous air-conditioned open-plan separate living & dining areas
- Huge covered east-facing balcony flows off living area – a great place to enjoy a coffee and the morning sun
- Large modern kitchen with granite bench-tops, stainless steel appliances & lots of cupboard space
- 3 good-sized bedrooms, all with built-ins. Air-conditioned main has ensuite, walk-in robe & entry onto front balcony.
- Second & third bedrooms open onto private rear balcony
- Main bathroom with shower over bath
- Separate internal laundry cleverly concealed
- Intercom security & security screens
- 1 car accommodation
- Small boutique block of 6 built in 2007
- Walk to train, bus, restaurants & coffee shops
- Close to parks, schools & Brookside Shopping Centre
- 7kms to CBD
- Low-Body Corps: Admin: \$411.40 p/qtr; Sinking: \$175.00 p/qtr
- Rates: \$374.63 p/qtr

3 BED | 2 BATH | 0 CAR

PRICE:

Offers over \$399,000

OPEN FOR INSPECTION:

N/A

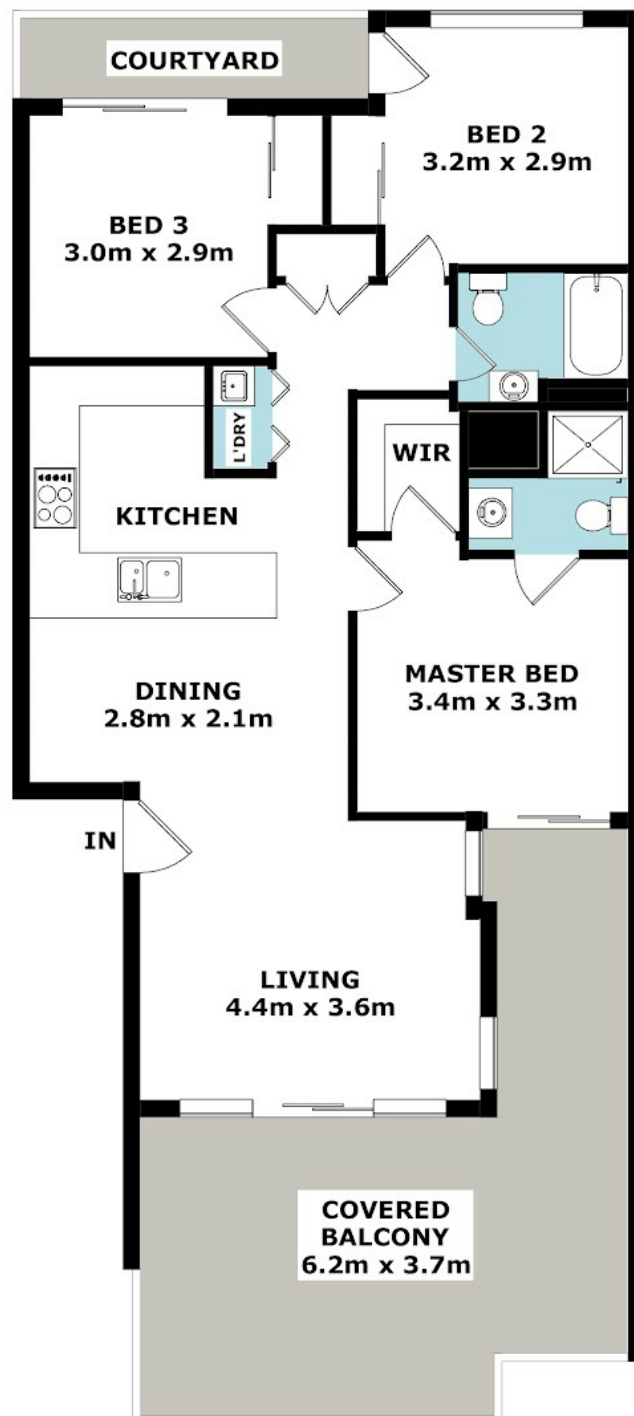


Marita Sorensen

0412260184

marita@atrealty.com.au

www.atrealty.com.au



APPROX GROSS INTERNAL AREA 92 sqm

APPROX GROSS TOTAL AREA 107

Disclaimer: Please note this floor plan is for marketing purposes and is to be used as a guide only. All dimensions are estimates only and may not be exact measurements.

and no responsibility is taken for any error, omission or misstatement. These plans are for representation purposes only.