

SOLD

LIGHTHOUSE APARTMENT

Perfectly positioned in the world's most livable city on the corner of Elizabeth and Franklin Street, Lighthouse is designed to become an iconic landmark in Melbourne.

Lighthouse residents enjoy communal features including a 25 meter indoor lap pool, outdoor heated spa, indoor and outdoor gymnasium, private dining and entertaining rooms complete with kitchen facilities.

This 2 bedroom apartment comprises of a kitchen with quality, European appliances and built in wardrobes in all bedrooms. The light fitted living room opens directly to the balcony.

Within close proximity to cafes, restaurants, shops, RMIT and Melbourne University, Queen Victoria Market, trams, Melbourne Central Train Station and Flagstaff Gardens, this delightful 2 bedroom apartment is priced to sell. Call Clive Chan on 0449 181 969 (Melbourne) for further information.

Sale by nomination.

Note: Photos are artist impressions only and may differ from the finished apartment

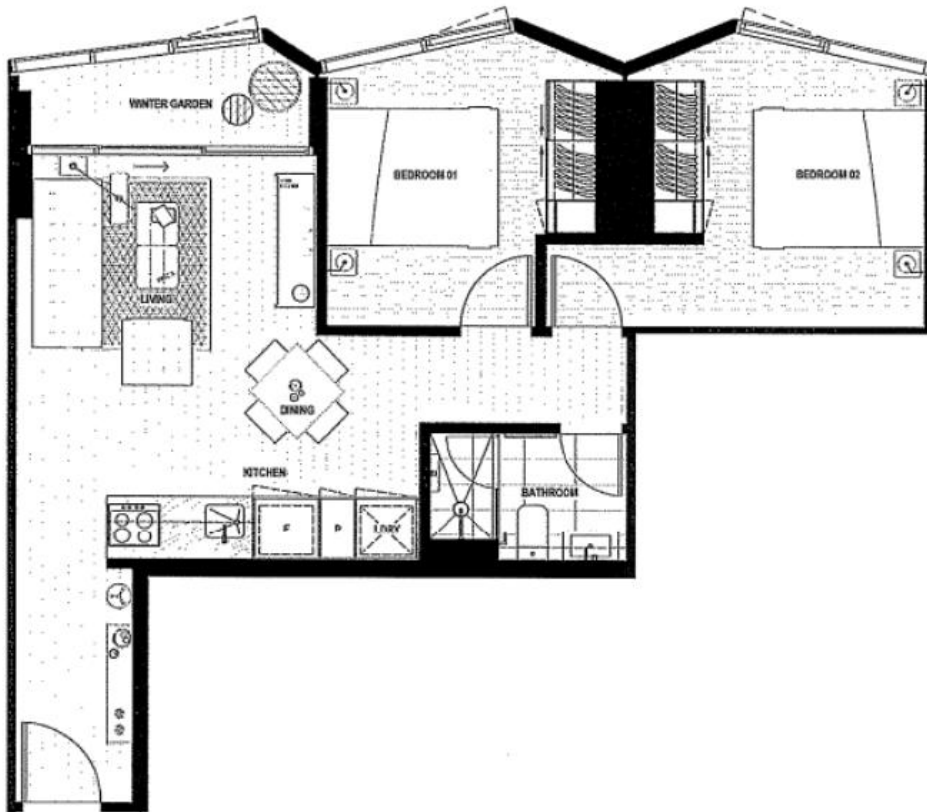
2 BED | 1 BATH | 0 CAR

PRICE:
\$539,000

OPEN FOR INSPECTION:
N/A



Clive Chan
0449181969
clivechan@atrealty.com.au
www.atrealty.com.au



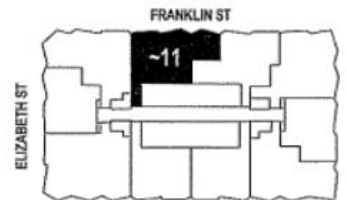
AREA	
APT. TYPE HR8.1 (LEVELS 42-45)	
APARTMENT	56.8 m ²
WINTER GARDEN	4.4 m ²
TOTAL	61.2 m ²

APT. TYPE HR8.2 (LEVELS 46-49)	
APARTMENT	56.7 m ²
WINTER GARDEN	4.2 m ²
TOTAL	60.9 m ²

APT. TYPE HR8.3 (LEVELS 50-54)	
APARTMENT	56.7 m ²
WINTER GARDEN	4.5 m ²
TOTAL	61.2 m ²

APT. TYPE HR8.4 (LEVELS 55-58)	
APARTMENT	56.8 m ²
WINTER GARDEN	4.5 m ²
TOTAL	61.3 m ²

APT. TYPE HR8.5 (LEVELS 41, 60-67)	
APARTMENT	57.0 m ²
WINTER GARDEN	4.2 m ²
TOTAL	61.2 m ²



Disclaimer: Please note this floor plan is for marketing purposes and is to be used as a guide only. All dimensions are estimates only and may not be exact measurements.