

FOR SALE

INVESTMENT OPPORTUNITY

This lowset family home represents excellent value for the investor and has been well maintained by the long term tenant. Located in the investor hot spot of Ipswich and surrounded by quality homes.

Featuring an open plan family room and modern galley style kitchen with stainless appliances, and separate lounge/media room.

Property features:

- 4 bedrooms with ceiling fans and builtin robes
- Master suite with walk in robe and ensuite
- Stainless appliances including dishwasher
- Undercover patio for outdoor entertaining
- Fully fenced yard
- Automatic double lock up garage

Long term tenant in place through to Oct 2017
Inspection by appointment, book your inspection today!

4 BED | 2 BATH | 0 CAR

PRICE:

Offers over \$367,000

OPEN FOR INSPECTION:

N/A

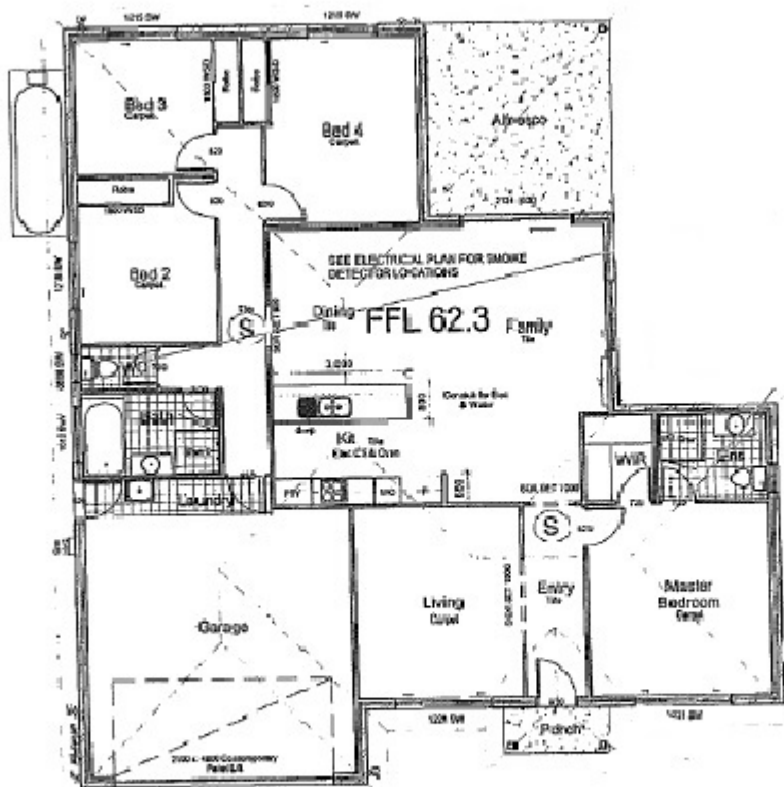


Paivi Dickie

0412909541

paivi@atrealty.com.au

www.atrealty.com.au



Disclaimer: Please note this floor plan is for marketing purposes and is to be used as a guide only. All dimensions are estimates only and may not be exact measurements.