



# FOR SALE

## ENTERTAINERS DELIGHT

Local Agents Leanne and Paivi would like to Welcome you to View this home that is one of the best value properties in Shailer Park on the market today. You will find this home in a sought after precinct with bushland and mountain views. When you drive into the street you will get the feeling that you are home. A few minutes walk will give you access to bushland walking and riding paths that are very popular and loved by locals.

This beautiful lifestyle also features.

4 Bedrooms with built in wardrobes and air conditioning, Main with ensuite and walk in robe.

Plus Home office /Study or Guest bedroom

Neutral Kitchen with New Appliances.

Large Formal lounge with Combustion fireplace and stunning outlook. The room has french doors leading out to the entertainers deck, where you will love having gatherings with friends and family .

Inground pool with great views, Gazebo and waterfall.

Security System

Solar power 12 Panels

Gas Hot Water

9 by 6 multipurpose workshop, storage, rumpus or home business. With side access and a second driveway with security gate and 3 metre high doors to shed.

Double Garage with internal entry to the house with Auto panel lift door

Beyond the 1240m2 fenced grounds, enjoy the spoils of this quiet and leafy suburb just 27 mins from the CBD. This premium Shailer Park location offers proximity to local shops and cafes,

4 BED | 2 BATH | 0 CAR

### PRICE:

Mid to High \$600s

### OPEN FOR INSPECTION:

N/A



**Leanne Smith**

**0428750122**

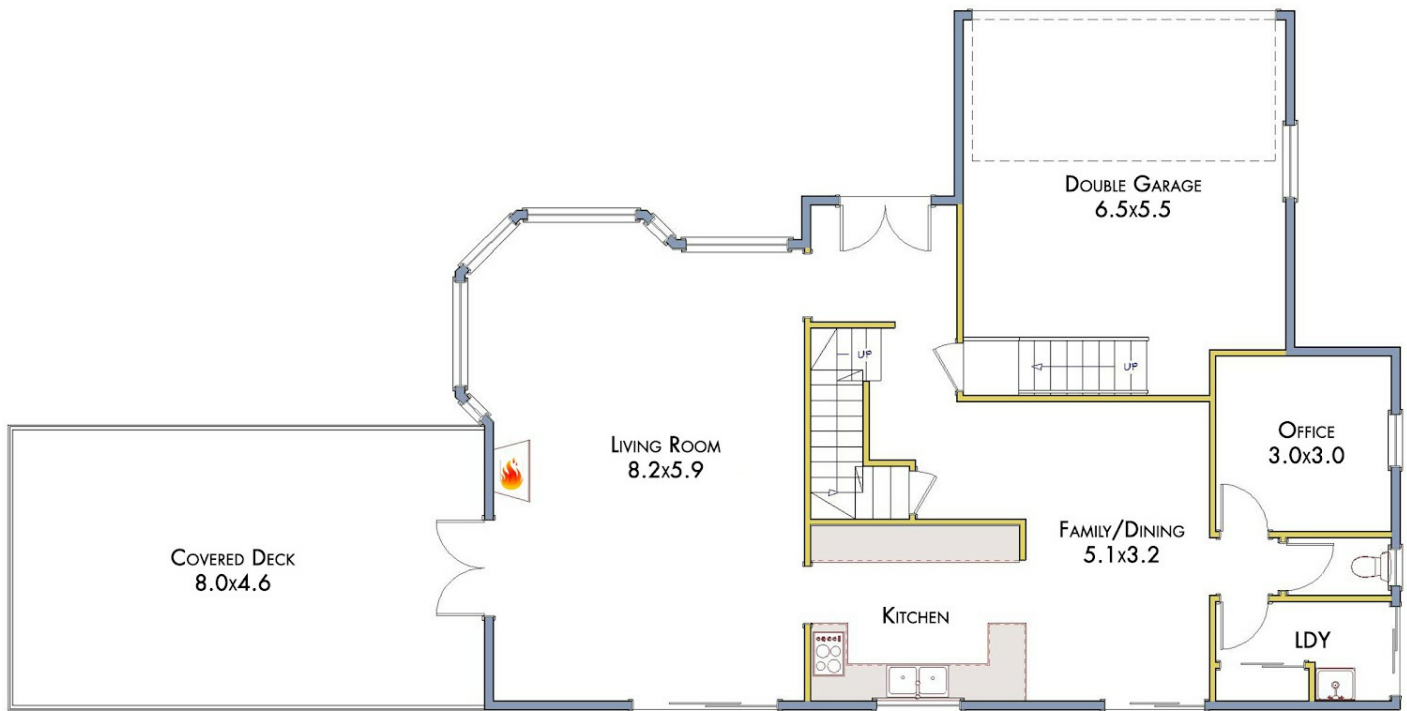
leannesmithproperty@atrealty.com.au

[www.atrealty.com.au](http://www.atrealty.com.au)

121-123 BOXER AVE, SHAILER PARK QLD 4128

GROUND FLOOR

APPROX. FLOOR PLAN AREA IS 187M<sup>2</sup>



**ABSTRACT VIEW**  
PHOTOGRAPHY

ALL MEASUREMENTS SHOWN OR IMPLIED ARE APPROXIMATE AND NO RESPONSIBILITY IS TAKEN FOR ANY ERROR, OR OMISSION, NOR IS ANY WARRANTY GIVEN. THESE PLANS ARE FOR ILLUSTRATIVE PURPOSES ONLY AND SHOULD BE USED SUCH. COPYRIGHT 2017. ALL RIGHTS RESERVED BY [ABSTRACTVIEW.COM.AU](http://ABSTRACTVIEW.COM.AU)

Disclaimer: Please note this floor plan is for marketing purposes and is to be used as a guide only. All dimensions are estimates only and may not be exact measurements.