



FOR SALE

FABULOUS HOME - GOLF COURSE ESTATE

Wanting a home that has everything? Then you need to see this beautiful quality home built in 2009 on a 736 sqm block in the prestigious golf course estate. The home has 9ft ceilings and gorgeous American Oak timber floors throughout the open plan living areas with quality carpeting to the bedrooms.

The home has four large bedrooms, two bathrooms, powder room, three living areas and double garage. The kitchen with Caesar stone bench tops overlooks the dining area to the outdoor living area and salt water swimming pool. The outdoor living area has recently been enclosed with prowler proof screens so makes an extra room ideal for entertaining.

The master bedroom is situated privately at the rear of the home with the other three bedrooms at the front of the home. One of the bedrooms has doors opening up to the front of the property making it ideal for a home business.

The bathrooms in this home are quality with tiles to the ceiling and double sinks in both bathrooms. The master bathroom also has a spa bath and rain shower, ideal for relaxing after a hard day of golf or at the office.

Within walking distance is the Pacific Harbour Golf and Country Club where you can enjoy the facilities of the 25 metre swimming pool, gym, tennis courts and club facilities. Look at these extra features:

- Ducted air conditioning – 8 zones
- Ceiling fans
- Airco security system
- Skylights to lounge & reading room
- Filtered water tap
- Vacuum maid
- Drive through access from the garage
- Prowler proof screens throughout
- Garden shed
- Irrigation system

The number of great features in this beautiful home are just too many to mention here, so call Geoff (your local agent) on 0414 230 130 to arrange your private inspection.

4 BED | 2 BATH | 0 CAR

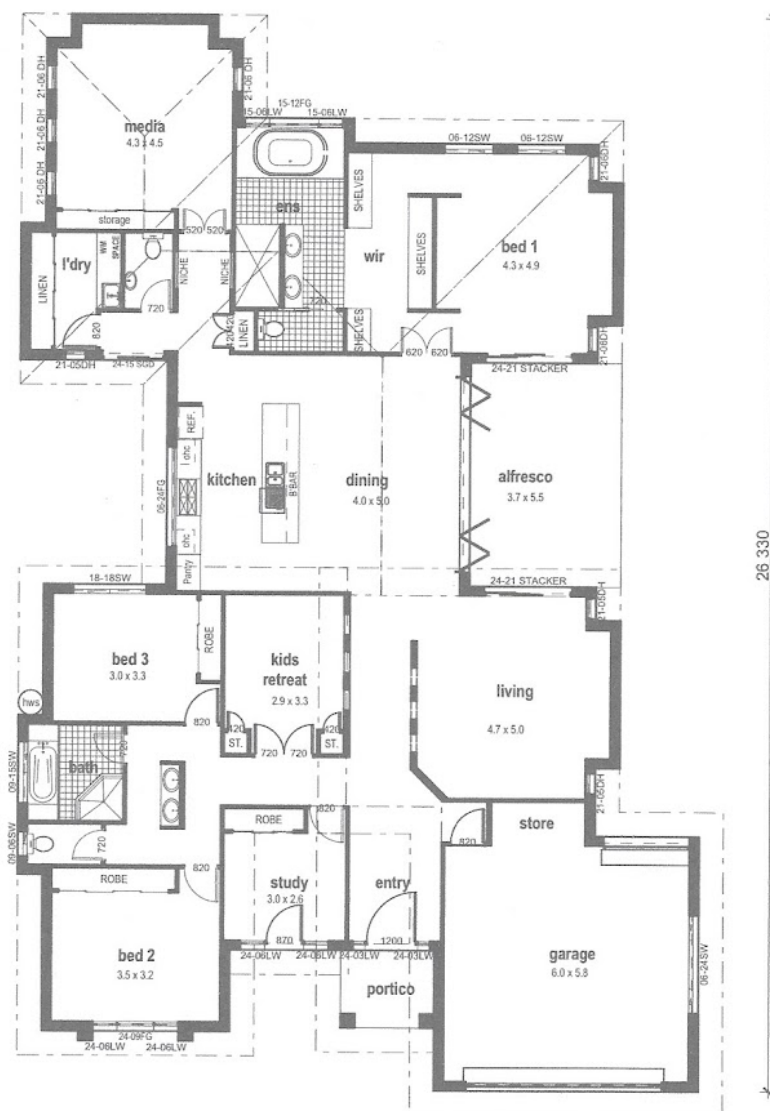
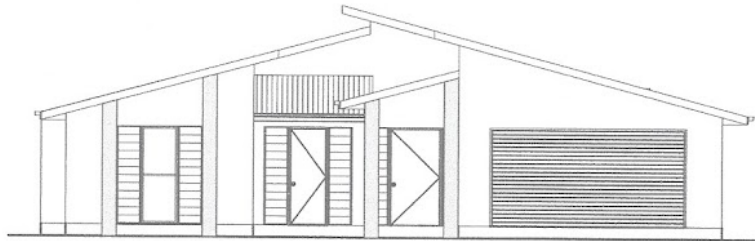
PRICE:
\$675,000

OPEN FOR INSPECTION:
N/A



Geoff and Rose Tutt
0414230130
geoff@atrealty.com.au
www.atrealty.com.au

LOT 91 BLUEBERRY ST. PACIFIC HARBOUR



Areas:
 Living: 254.80sqm
 Garage: 41.72sqm
 Entry: 4.35sqm
 Alfresco: 20.55sqm
 Total: 321.42sqm
 (34.58sqs)

Disclaimer: Please note this floor plan is for marketing purposes and is to be used as a guide only. All dimensions are estimates only and may not be exact measurements.