

SOLD

IMMACULATE SINGLE LEVEL RESIDENCE ON THE PALM'S GOLF COURSE

Sanctuary Cove is a gated community you will need to arrange access prior to gaining access to the estate. Please contact David Druce on 0414 404 050

This superbly appointed single level home features three generously sized bedrooms, separate media room, gourmet kitchen with stone bench tops and a secure double car garage with golf buggy space. Ideally configured for family living, this 246sqm home incorporates impressively large ceiling spaces and impeccable interior design and finishes. A private internal courtyard and beautifully landscaped gardens combine to create a serene retreat.

- * Direct golf frontage overlooking The Palms championship golf course
- * Three generous bedrooms
- * Media room
- * Private internal courtyard
- * Master bedroom with ensuite featuring a free-standing bath and "his and her's" walk-in robe
- * Covered rear patio with natural gas point
- * Fully ducted air-conditioning
- * Streamlined, gourmet kitchen fitted with the best of Miele appliances
- * Double garage with golf buggy space
- * Premier location within the secure, gated grounds of Sanctuary Cove
- * High ceilings and expansive use of glass maximising light and views
- * 24 hour security land and sea

The home enjoys an enviable position just a short buggy ride away from the Marine Village with harbourside restaurants and cafés, art galleries, shopping, village theatre and 300 berth marina. The exclusive Country Club is in close proximity and two premier golf courses are on your doorstep.

The famous white sand beaches and glittering surrounds of the Gold Coast are only 20 minutes by car, while direct access to the M1 freeway puts the culture and commerce of Brisbane, Queensland's capital, and its major airports just 40 minutes away.

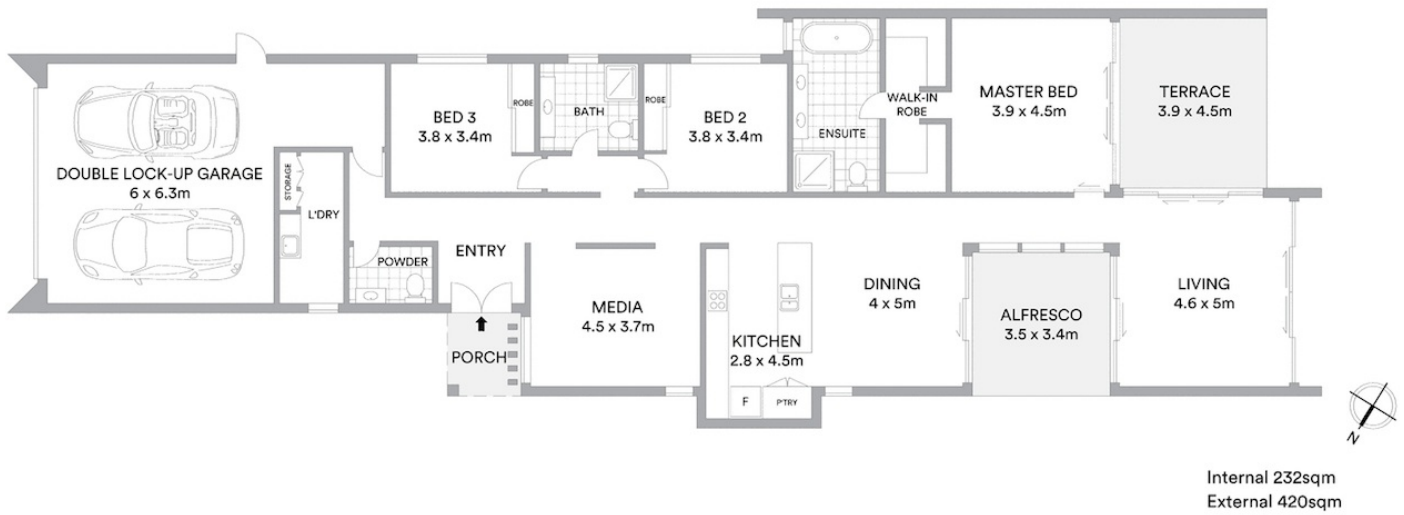
3 BED | 3 BATH | 2 CAR

PRICE:
\$1,050,000

OPEN FOR INSPECTION:
N/A



David Druce
0414404050
druce@atrealty.com.au
www.atrealty.com.au



Scale in metres. Indicative only. All information contained herein is obtained from sources we believe to be accurate. We cannot guarantee its accuracy. Interested persons should make and rely on their own enquiries

Disclaimer: Please note this floor plan is for marketing purposes and is to be used as a guide only. All dimensions are estimates only and may not be exact measurements.