

FOR SALE

AFFORDABLE MODERN UNIT IN A FABULOUS LOCATION!!

Presented by local agent's Mark Roemermann and Andrew Emms ...

- * Live 150m from the wide open green spaces of Kalinga Park
- * Bikeways and walking tracks are close by
- * Nundah Village with shops, cafes and restaurants is moments away
- * Toombul Shopping Centre with major retail outlets is within walking distance
- * Short stroll to Toombul train station for easy commute into the city
- * Only 12 mins from the airport, 70 mins from Sunshine and Gold Coasts
- * Great range of schools, sporting clubs and childcare options all nearby

Your new investment or home is set in a private and tranquil enclave of Nundah where you'll benefit from the close proximity to cafes, major shopping centres and public transport, as well as beautiful green open spaces ready to enjoy.

The open, light-filled floorplan offers two bedrooms, both with built-in robes, and two bathrooms. The kitchen boasts granite countertops, a dishwasher and plenty of storage, and overlooks the open-plan living and dining space. Here, sliding doors open out to a sunny balcony with a lovely leafy outlook.

This neat and tidy, low-maintenance contemporary unit is perfect for budget conscious buyers looking for great value in a quiet pocket close to the city with everything else Nundah has to offer.

Let's tick some more boxes:

- Bright, modern floorplan with plenty of natural light
- All space is fully utilised with plenty of storage
- Extra features include ceiling fans, reverse-cycle air-conditioning
- Great balcony with leafy outlook
- Single lock-up garage with remote control
- Secure, well-maintained building with intercom access
- Security screens on sliding doors and windows
- Tiled throughout the living spaces, carpet in the bedrooms

2 BED | 2 BATH | 1 CAR

PRICE:

Offers over \$359,000

OPEN FOR INSPECTION:

N/A

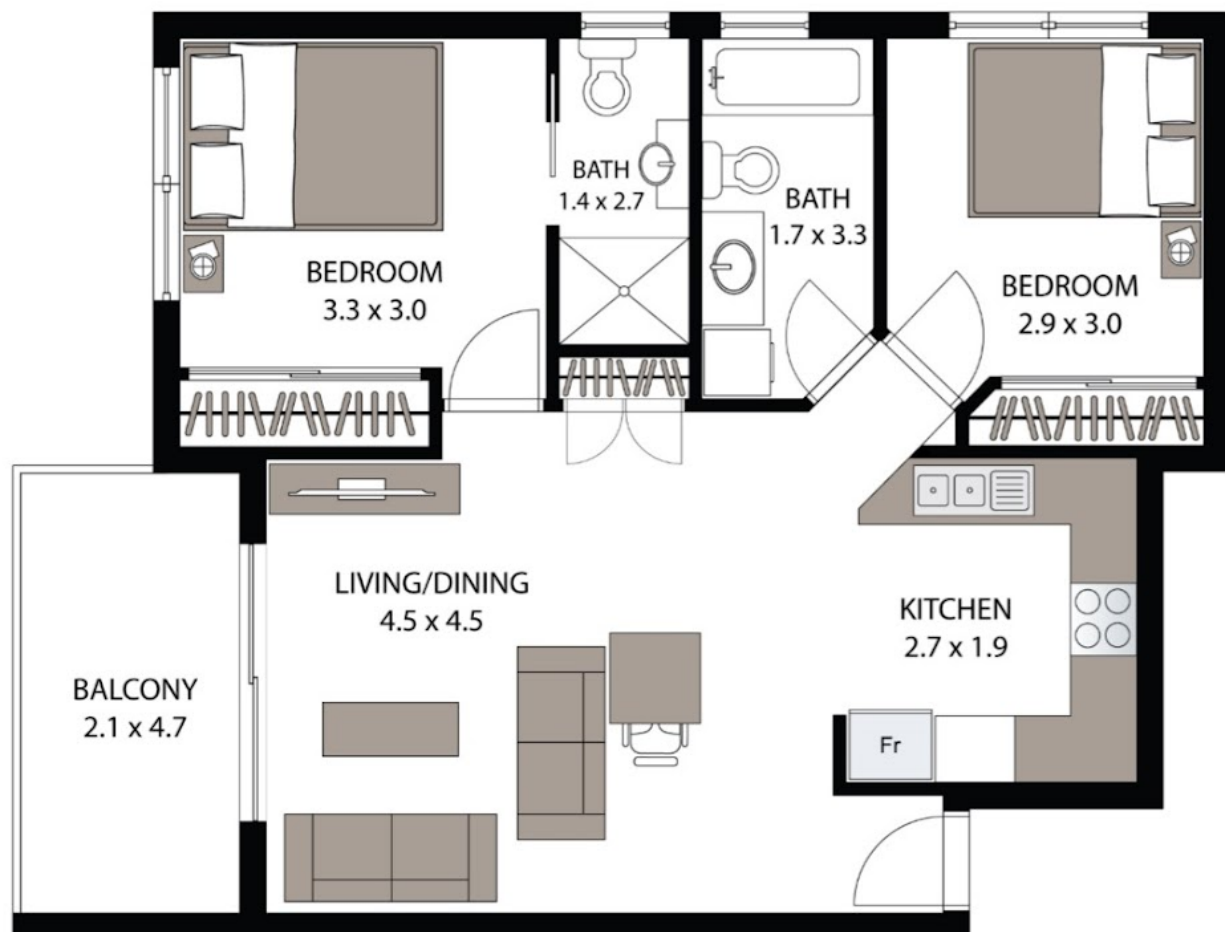


Mark Roemermann

0413877230

markroemermann@atrealty.com.au

www.atrealty.com.au



2/62 Hamson Tce NUNDAH QLD 4012

ARTIST'S IMPRESSION ONLY: While every attempt has been made to ensure the accuracy of this floor plan measurements of

Disclaimer: Please note this floor plan is for marketing purposes and is to be used as a guide only. All dimensions are estimates only and may not be exact measurements.

intended for marketing purposes only and should only be used as a guide by any prospective purchaser. Floor plan by: nuvision media pty ltd.