

SOLD

PRICE REDUCTION ON THIS WONDERFUL WATERFRONT TOWNHOUSE AFFORDABLE , SPACIOUS AND WELL PRESENTED !!

Located within a conveniently positioned Complex - security, privacy and extra recreational facilities are provided for your enjoyment. A great lifestyle awaits new owners.

Special Features of this Home:

- * Enjoy walking, kayaking, fishing, boating or even crabbing just meters from your backyard
- * Clean and immaculately maintained
- * Fantastic screened decking area for entertaining guests or just enjoying the view
- * 3 x Spacious bedrooms upstairs, including the Master bedroom with balcony and en suite - so many storage options and large built in wardrobes in all bedrooms
- * Stunning views from the Master bedroom balcony - water views from the balcony
- * A large townhouse with spacious, open plan living area downstairs - room for the separate dining area and lounge area.
- * Floating timber floors downstairs - carpet upstairs.
- * Great size kitchen, with privacy counter to avoid viewing dishes and cooking utensils but still allowing the Chef of the family to converse with family and friends.
- * 2 bathrooms and a downstairs powder room, for guests.
- * Laundry area off single , remote opening garage, plus an extra car space and front entrance courtyard
- * Light, airy and with reverse cycle air- conditioning unit downstairs.

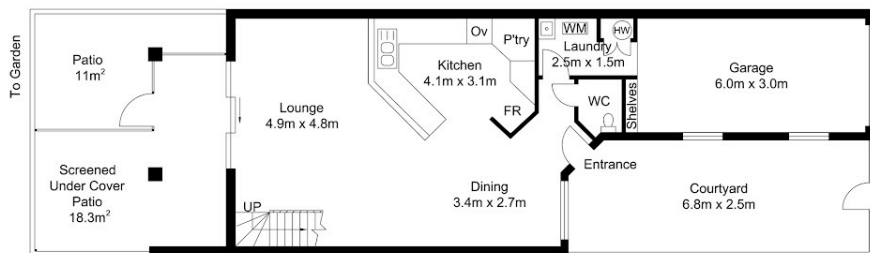
3 BED | 2 BATH | 1 CAR

PRICE:
\$385,000

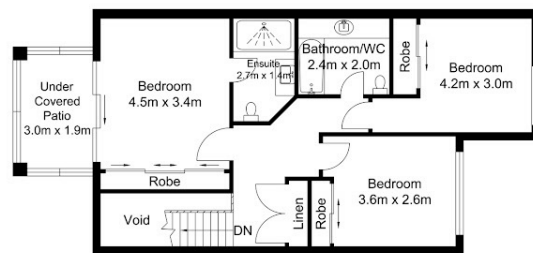
OPEN FOR INSPECTION:
N/A



Susan Crook
0407285852
susancrook@atrealty.com.au
www.atrealty.com.au



Ground Floor
Approximate Floor Area
70.60 sq. m



Upper Floor
Approximate Floor Area
57.40 sq. m

TOTAL APPROX FLOOR AREA 128.00 SQ. M.

Whilst every attempt has been made to ensure the accuracy of the floor plan contained here, measurements of doors, windows, rooms and any other items are approximate and no responsibility is taken for any error, omission or mis-statement. This plan is for illustrative purposes only and should be used as such by any prospective purchaser.
www.zome.com.au

Disclaimer: Please note this floor plan is for marketing purposes and is to be used as a guide only. All dimensions are estimates only and may not be exact measurements.