



**SOLD**

## SOLD BY LEANNE AND PAIVI

This property is a 'must inspect' to fully appreciate all that this big, spacious home has to offer. On a large lot of natural bushland and surrounded by forest reserve, the property features an impressive residence, side access, room for sheds and is being marketed by local agents Leanne and Paivi. So many possibilities for now and the future. Approximately 250m2 cleared flat pad with separate access possible. The house design lends itself to either single or dual family (even inter-generational) occupancy.

The stunning 5-bedroom home encompasses the best of our Queensland lifestyle, with outstanding liveability sprawled out on one level, and an amazing feeling of space with your own bushland buffer from suburbia. Capturing the panoramic vista of the mountains and forest, the views are undeniably some of the best in Shailer Park, and never to be built out, as you are the top of the hill with the Kimberley Grove forest as your nearest neighbour!

The interior exudes quality, from the timber and stone top kitchen, through to the dining and living areas, and leading onto the expansive entertainer's patio embracing the forest outlook and its surrounds. This is the ultimate space for alfresco dining and complete privacy.

If you are looking for a unique home that is both private and close to shops, transport and schools, if you love wildlife, if you enjoy bush walking or mountain biking, you need to call Leanne and book your private inspection today.

This unique property also boasts:

5 King sized bedrooms, plus a study

Main bedroom has a private ensuite overlooking bushland, a spa and double shower, a wardrobe that must be seen to be believed and doors leading out to the entertainment area. What a view to wake up to each day!!

3 Bathrooms

3 Living areas to choose from, Formal, informal open plan living and kitchen and the media room.

Updated quality kitchen with new appliances and stone benchtops.

Painted light modern colour throughout.

Luxury carpets.

Combustion fireplace

Side Access, room for a boat or caravan

This home is ready for new owners to move in, unpack, and start living your incredibly

**5 BED | 3 BATH | 0 CAR**

**PRICE:**  
**\$870,000**

**OPEN FOR INSPECTION:**  
**N/A**

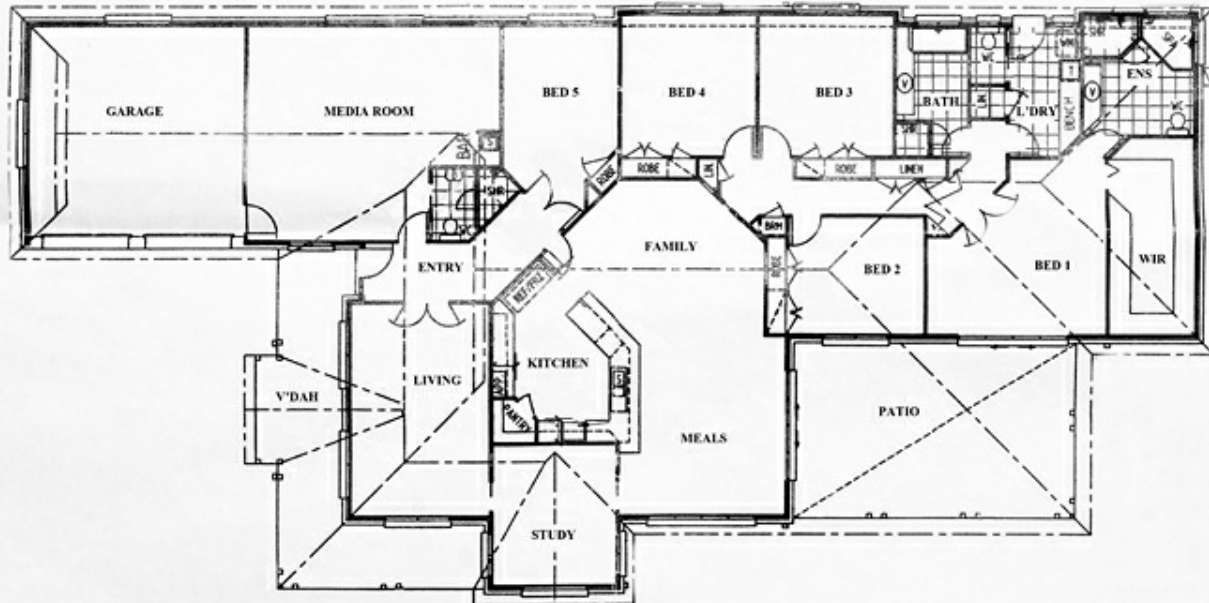


**Leanne Smith**  
**0428750122**

leannesmithproperty@atrealty.com.au

[www.atrealty.com.au](http://www.atrealty.com.au)

129 Boxer Ave



Note - this plan is an illustration and is a guide only

Disclaimer: Please note this floor plan is for marketing purposes and is to be used as a guide only. All dimensions are estimates only and may not be exact measurements.