



SOLD

ENJOY WINTER IN NOOSA.

Here is your opportunity to enjoy your holiday in the warm winter sun of Queensland's sub-tropical climate in a townhouse nestled in a quiet area of one of Noosa's most popular resorts.

Fully furnished Villa with dining/lounge area opening on the north side to a courtyard with abundant landscaping where you can start your days with a leisurely breakfast.

Light filled bedrooms on the upper level with outlooks to trees and greenery, with the main bathroom adjacent. There is a loft for teenagers or children, or for extra storage. Laundry and additional Toilet is on the ground floor.

Comfort is guaranteed with airconditioning and fans throughout.

You will love the facilities including 3 pools, the largest of which has been renovated recently, spas, sauna, games room, gym and undercover BBQ and relaxation area. Noosa's sparkling river with its numerous activities of swimming, boating, kayaking, fishing, is just on the other side of Gympie Terrace and five minutes to Hastings Street.

The resort has professional onsite managers to maintain the high standard of your holiday investment, who consistently drive excellent returns.

Open Homes - As this unit is heavy booked, open homes are very limited.

For Open homes - Please Enter via Thomas Street gate. If gate is shut, please call me on 0416 143 952.

Next Open Home-

Contact Karen Hardcastle for viewing and more detailed investment information, 0416 143 952

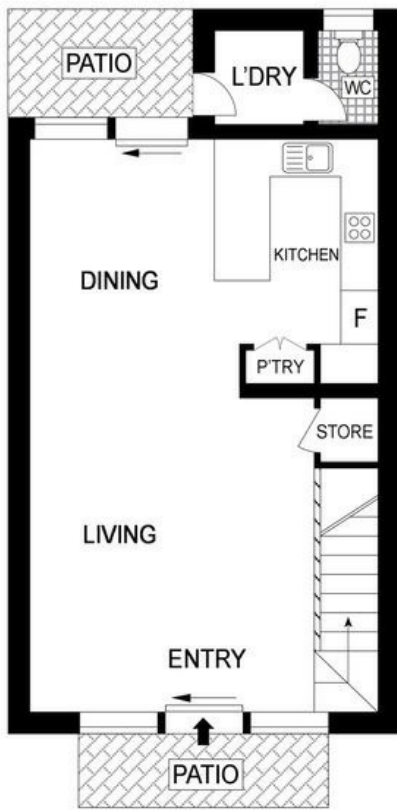
2 BED | 1 BATH | 1 CAR

PRICE:
\$338,000

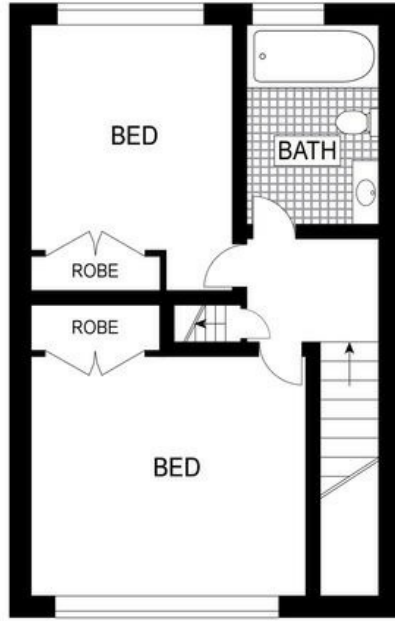
OPEN FOR INSPECTION:
N/A



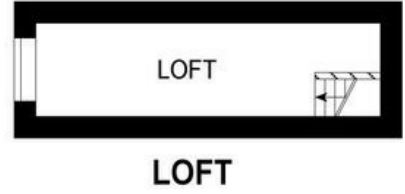
Karen Hardcastle
0416143952
karenh@atrealty.com.au
www.atrealty.com.au



GROUND FLOOR



FIRST FLOOR



INT: 113 m²
EXT: 10 m²

Scale in metres. Indicative only. Dimensions are approximate. All information contained herein is gathered from sources we believe to be reliable. However, we cannot guarantee its accuracy and interested persons should rely on their own enquiries.

43/187 Gympie Terrace, Noosaville



Disclaimer: Please note this floor plan is for marketing purposes and is to be used as a guide only. All dimensions are estimates only and may not be exact measurements.

Karen Hardcastle
0416143952
karenh@atrealty.com.au
www.atrealty.com.au

