

# FOR SALE

## TOP LOCATION - SPECTACULAR VIEWS

### ATTENTION: FIRST HOME BUYERS AND INVESTORS

If you are searching for a lovely two bedroom home close to the city, you have found it right here! With a nice contemporary street appeal, this is the perfect home close to all amenities, such as shops and transport. You will love the clean and modern layout creating a lovely sense of indoor outdoor flow to the large balcony.

The open plan design provides a relaxing feeling, perfect when returning home after a busy day at work. The modern kitchen and balcony area with a leafy outlook is ideal for entertaining. The kitchen features plenty of cupboard space with a granite style bench top and quality stainless steel appliances. The two double bedrooms are well separated for privacy and have large modern built-in wardrobes while the main bedroom has a modern ensuite. Perfectly positioned in a solidly built block of well-maintained units. Rest peacefully with secure intercom entry. Park your car in the secure under ground level with auto gate remote for easy access.

- Large open plan kitchen with oven, range hood and dishwasher
- Large balcony
- Air-conditioned
- Double bedrooms with built in wardrobes
- Intercom entry
- Security screen doors and screens
- Secure underground car parking
- Gas direct hot water and Gas stove
- Separate laundry
- NBN internet ready

Looking for a home or an investment property, this property has so much to offer.

Only a skip and a jump to buses; close access to Brisbane CBD, minutes to the M3 – within the 10KM golden CBD circle.

Call or text Ronny now on M. 0449 150 001 for further details and inspection

2 BED | 2 BATH | 1 CAR

### PRICE:

Offers over \$315,000

### OPEN FOR INSPECTION:

N/A

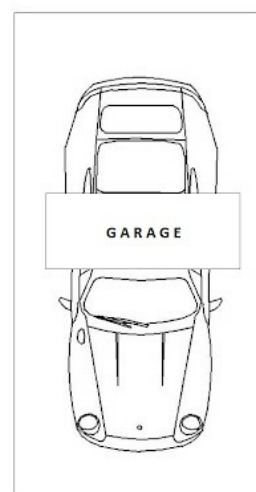
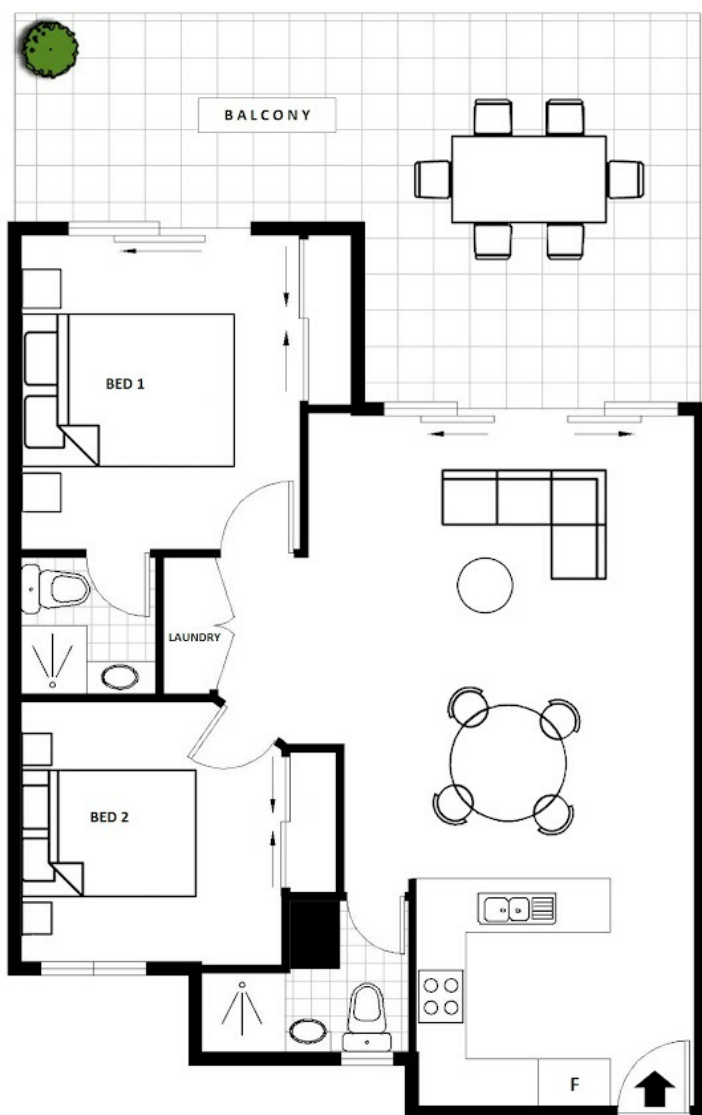


**Ronny Cronqvist**

**0449150001**

ronny@atrealty.com.au

[www.atrealty.com.au](http://www.atrealty.com.au)



Disclaimer: Please note this floor plan is for marketing purposes and is to be used as a guide only. All dimensions are estimates only and may not be exact measurements.