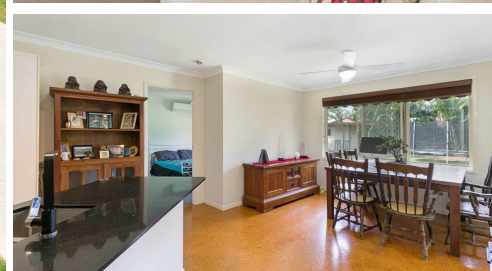


11 CHESTERFIELD CRESCENT WELLINGTON POINT



FOR SALE

SOLD! IMMACULATE, SPACIOUS "MONTGOMERY PARK" HOME - MUST BE SOLD!!!

SOLD!

Ladies and gentleman, we have a superb lifestyle opportunity for you here, but you'll need to move fast!

Situated in a quiet, leafy street in the heart of Wellington Point's sought-after Montgomery Park Estate is this great family home.

Features include 4 spacious bedrooms including 2 air-conditioned main bedrooms with ensuite access.

The kitchen is well-appointed with black granite bench tops and straddles the spacious lounge and family-dining areas.

Outside features a large and private outdoor entertainment area as well as a courtyard area off the primary main bedroom.

The yard and grounds are immaculately maintained and presented and the block includes full side access to the back yard.

Situated in a truly family-friendly location, you'll love being just a short stroll to local schools, shops and bus.

And all of this is only 25 mins to Brisbane CBD, 45 mins to the Gold Coast, and 5 mins to Bayside's best beaches.

Folks, there will be plenty of interest in this home, so don't miss your chance. Call now, inspect today!

4 BED | 2 BATH | 2 CAR

PRICE:
SOLD!

OPEN FOR INSPECTION:
N/A



Ben Tafolo
0419260719
tafolo@atrealty.com.au
teamtafolo.com.au