



FOR SALE

STUNNING HOME IN A QUIET LOCATION

Presenting this property situated on a generous 850sqm block at Pacific Harbour's OSPREY ISLAND development. You will be impressed with this spacious home with quality fittings and fixtures throughout.

The home features open plan living, dining, kitchen, separate rumpus room, home theatre, large study, 2 ½ bathrooms and an oversized double garage. A king sized luxury master suite, with double vanity ensuite and walk-in-robe is located away from the other three queen sized bedrooms.

A designer kitchen with Granite bench tops features a large pantry, plumbed wide refrigerator area, a 90cm wide oven, ceramic cook top and a sink waste disposal unit. A great place for the home chef to show off their culinary skills.

There are four large living areas in this home, a family room off the open plan kitchen/dining room, rumpus room, separate media room and home office. Lots of space to entertain family and friends both inside and outdoors.

At the rear of the property, a large alfresco undercover entertainment area with timber decking, overlooks the salt water swimming pool and easy care gardens. The pool is 11m x 4m, interior just renovated, with new pump, chlorinator and LED lights. Look at these extra features:

- Wheel chair friendly
- Fully ducted reverse-cycle air conditioning
- 5kws solar power & solar hot water
- Ducted vacuum system
- Heat lights to bathrooms
- Side access for a boat or trailer
- Security alarm system
- Tinted windows
- Shed
- 5000 litre water tank plumbed to toilets and laundry
- 2000 litre water tank for irrigation with pump

This is a great home and must be viewed to appreciate all that it has to offer. So, call Geoff (your

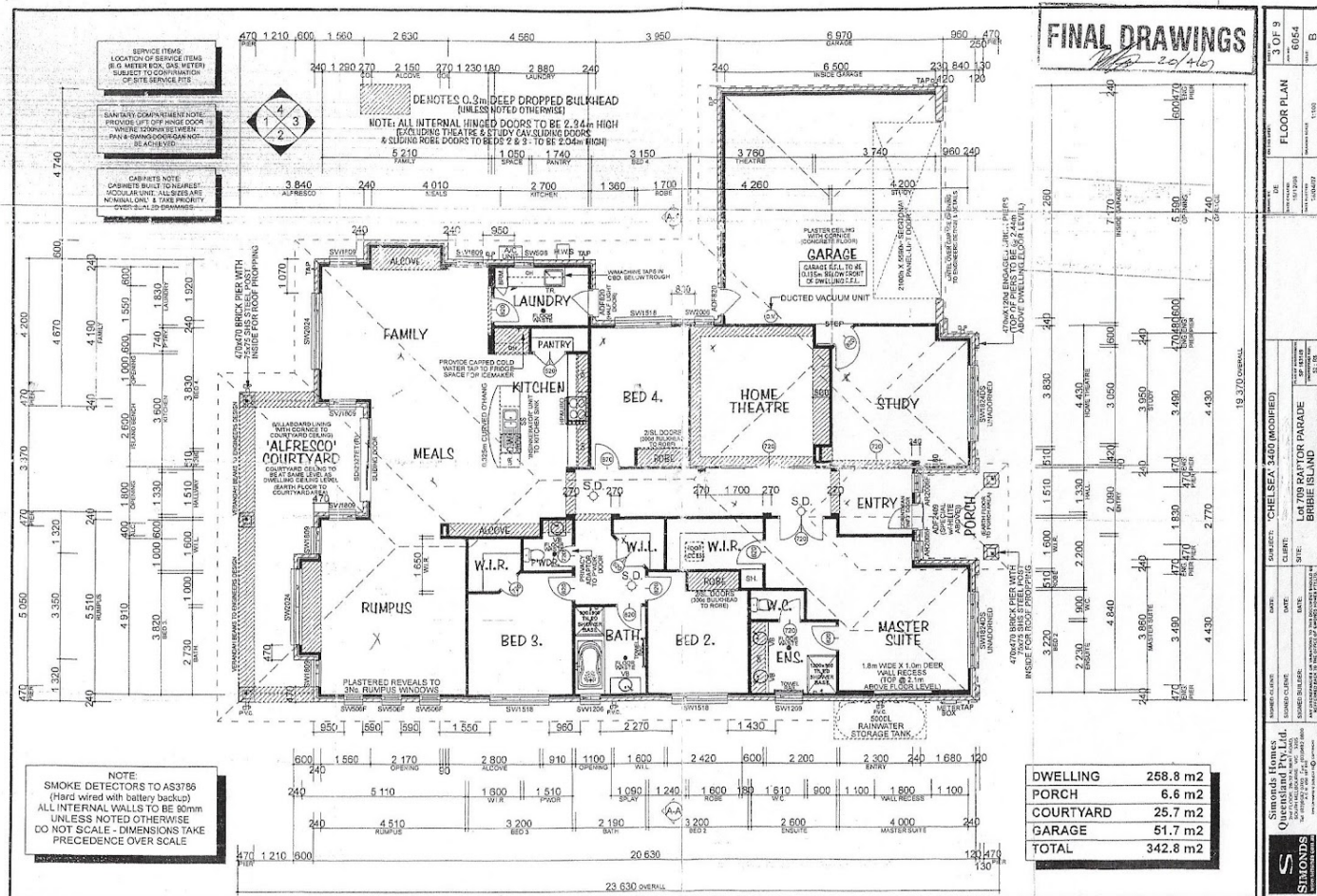
4 BED | 2 BATH | 2 CAR

PRICE:
SOLD BY GEOFF TUTT

OPEN FOR INSPECTION:
N/A



Geoff and Rose Tutt
0414230130
geoff@atrealty.com.au
www.atrealty.com.au



Disclaimer: Please note this floor plan is for marketing purposes and is to be used as a guide only. All dimensions are estimates only and may not be exact measurements.