



SOLD

MODERN, CLASSY, EASY LIVING

THE HEADING SAYS IT ALL, JUST WALK IN, RELAX AND ENJOY THIS BEAUTIFUL BUILT EXECUTIVE HOME.
AN INSPECTION OF THIS QUALITY BUILT HOME WILL REVEAL THE BEST OF MODERN LIVING WITH THE LUXURY OF MINIMAL MAINTENANCE, PERFECT FOR THE RETIREE OR PROFESSIONAL COUPLE.
OPEN PLAN KITCHEN, MEALS, FAMILY AREA ENJOYS VIEWS FROM LARGE NORTH FACING WINDOWS, CAPTURING ALL THE NORTHERN WINTER SUN.
THE KITCHEN IS TO DIE FOR WITH SOFT CLOSE DRAWS, STAINLESS STEEL APPLIANCES AND A HIDDEN BUTLERS PANTRY, THE PERFECT KITCHEN ACCESSORY.
A FORMAL LOUNGE OR THEATRE ROOM IS THE PERFECT GETAWAY, TO WATCH YOUR FAVORITE MOVIE OR TV SHOWS.
THERE ARE 4 LARGE BEDROOMS WITH THE MAIN HAVING HIDDEN WRAP AROUND EN-SUITE, BUILT IN HIS AND HERS TALL BOYS PLUS WALK IN ROBE. 2 OTHER BEDROOMS HAVE BUILT IN DESKS AND WALK IN ROBES WITH 4TH BEDROOM WITH FULL LENGTH ROBE.
THE EN-SUITE AND OTHER WET AREAS ARE BEAUTIFULLY FINISHED, AND REVERSE CYCLE AIR-CONDITIONING, KEEPS THE HOME THE RIGHT TEMPERATURE ALL YEAR ROUND.
FULLY ENCLOSED ALFRESCO AREA IS PERFECT FOR ENTERTAINING FAMILY AND FRIENDS.
THERE IS A DOUBLE GARAGE WITH INSIDE ACCESS AND A STORAGE ROOM BIKES OR GOLF CLUBS.
EASY CARE GARDENS, MAKE THIS THE PERFECT HOME AND INSPECTION IS RECOMMENDED.

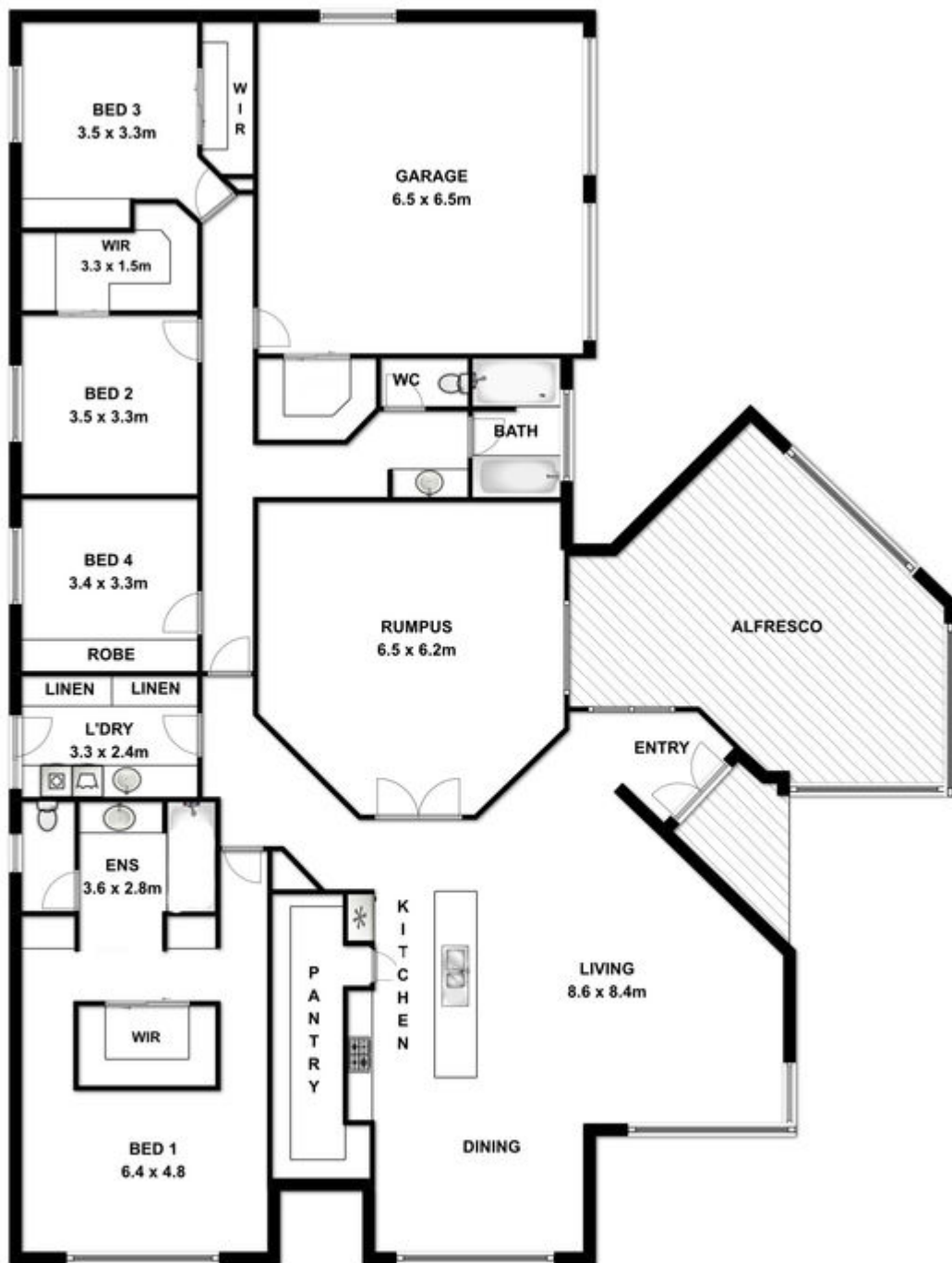
4 BED | 2 BATH | 2 CAR

PRICE:
\$495,000

OPEN FOR INSPECTION:
N/A



Peter Dempsey
0418854393
peterdempsey@atrealty.com.au
peterdempseyatrealty.com
RLA: 269823



This drawing is for illustration purpose only. All measurements are approximate only and information intended to be relied upon should be independently verified.

Disclaimer: Please note this floor plan is for marketing purposes and is to be used as a guide only. All dimensions are estimates only and may not be exact measurements.