



# FOR SALE

## UNDER CONTRACT BY ANDREW COLLEY

Fabulous and elegant, 5 bedroom house, with stunning in ground pool, has the X factor you would expect, plus much more. With a large ground floor 5th bedroom/rumpus room/media room, located just near the front door, this house easily lends itself to the home worker, as you can easily entertain clients away from the rest of the house. Located adjacent to the oval at McAuley Parade and so conveniently placed for Park Lake school, it is set amongst other high quality, beautifully maintained neighbouring homes.

Park Lake very closely benefits from the popular and well respected Park Lake Primary School, Pacific Pines State High Schools plus excellent private schools at Coomera. Westfield shopping centre, the train station at Helensvale and the M1 both of which provide fast and easy access to Brisbane. Beautiful parks are close at hand as is Jetts 24 hour gym and Superfish swimming pool. A new Coles at Binstead way makes life it even easier.

- 2 Master bedrooms with en suites
- 5 kW solar system
- 5 bedrooms all have ceiling fans
- 667m2 block
- Undercover alfresco decked area with blue LED lighting
- 11m free form pool, with grotto and waterfall, spa jets, LED programmable pool lighting
- Bali hut with power, light and ceiling fan
- Outside lighting
- 10,000 litre rainwater tank
- Programmable (timer) irrigation system throughout the gardens
- Tool shed
- Zoned Ducted air conditioning and heating
- Two, gated side accesses both with concrete pads for a caravan, boat and a trailer/jet ski
- Massive under house storage, ideal for tradie business storage
- Double auto lock up garage with 2 large storage cupboards
- Zoned security alarm

5 BED | 3 BATH | 2 CAR

PRICE:  
UNDER CONTRACT

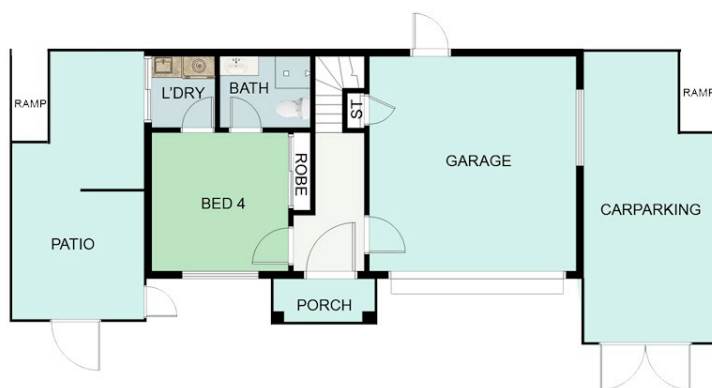
OPEN FOR INSPECTION:  
N/A



**Andrew Colley**  
**0488217803**  
andrewcolley@atrealty.com.au  
[andrewcolley.com.au](http://andrewcolley.com.au)



FIRST FLOOR



GROUND FLOOR

29 Greenway Boulevard, Maudsland

Disclaimer: Please note this floor plan is for marketing purposes and is to be used as a guide only. All dimensions are estimates only and may not be exact measurements.