



FOR SALE

CITY VIEWS - PRICED FOR QUICK SALE

CITY VIEWS FROM THIS X-LARGE BALCONY

If you are searching for a lovely two bedroom home close to the city, you have found it right here! With a contemporary street appeal, this is the perfect home close to all amenities, such as shops and transport. You will love the clean and modern layout creating a lovely sense of indoor outdoor flow to the extra large balcony.

The open plan design provides a relaxing feeling, perfect when returning home after a busy day at work. The modern kitchen and balcony area with a leafy outlook is ideal for entertaining. The kitchen features plenty of cupboard space with a granite style bench top and quality stainless steel appliances. The two double bedrooms are well separated for privacy and have large modern built-in wardrobes while the main bedroom has a modern ensuite. Perfectly positioned in a solidly built block of units. Rest peacefully with secure intercom entry. Park your car in the secure under ground level with auto gate remote for easy access.

- Large open plan kitchen with oven, range hood and dishwasher
- Large balcony with city views
- Air-conditioned
- Double bedrooms with built in wardrobes
- Intercom entry
- Fly screens
- Secure underground car parking
- Gas direct hot water and Gas stove
- Separate laundry
- NBN internet ready

Looking for a home or an investment property, this property has so much to offer.

Only a skip and a jump to bus stop; close access to Brisbane CBD, minutes to the M3 – within the 10KM golden CBD circle.

Call or text Ronny now on M. 0449 150 001 for further details and inspections

2 BED | 2 BATH | 1 CAR

PRICE:

Offers over \$305,000

OPEN FOR INSPECTION:

N/A

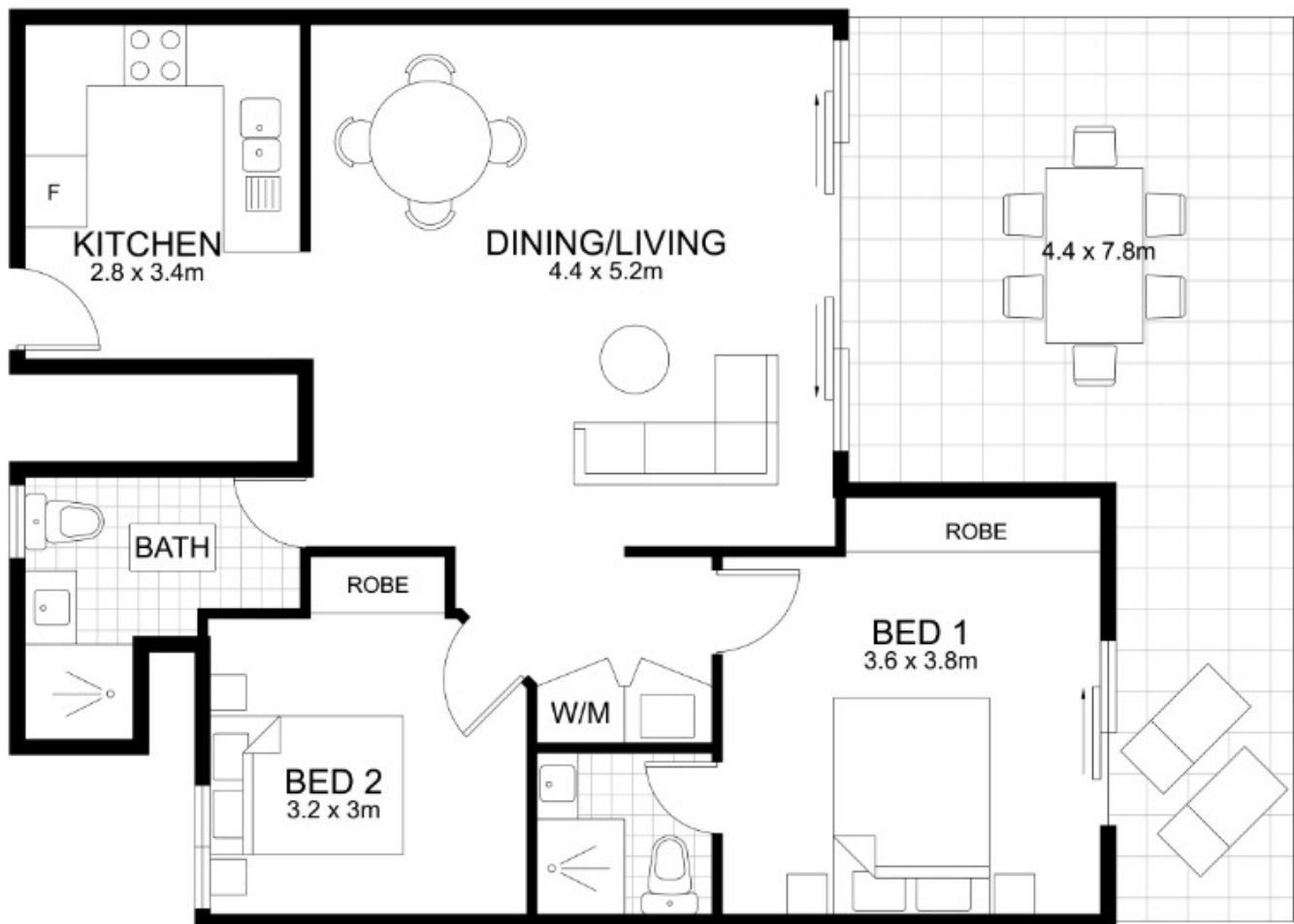
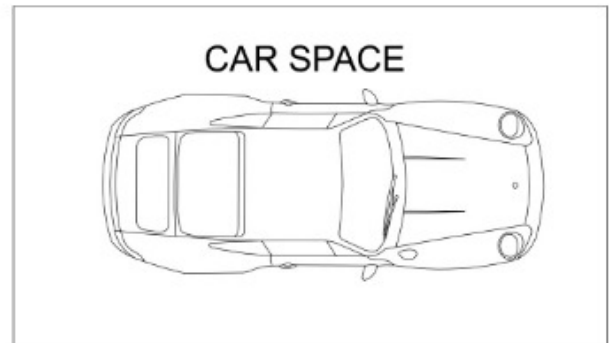


Ronny Cronqvist

0449150001

ronny@atrealty.com.au

www.atrealty.com.au



Disclaimer: Please note this floor plan is for marketing purposes and is to be used as a guide only. All dimensions are estimates only and may not be exact measurements.

Floor plan created by Rolley Photo Media. All rights reserved, Copyright 2016

TOTAL AREA : 103m²

8/269 Nursery Road, Holland Park

Ronny Cronqvist

0449150001

ronny@atrealty.com.au

www.atrealty.com.au

