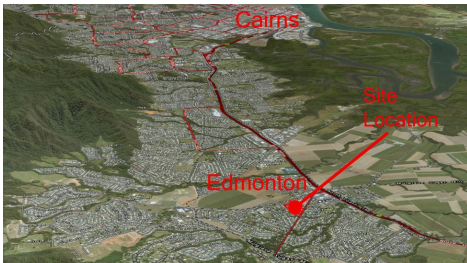
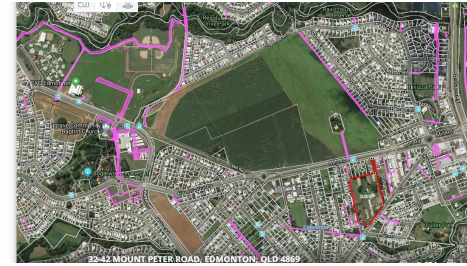


32-42 MOUNT PETER ROAD EDMONTON



FOR SALE

CENTRALLY LOCATED 3.67 HA MEDIUM-DENSITY RESIDENTIAL DEVELOPMENT SITE IN EDMONTON - TWO STREET ACCESS.

Edmonton is a location on the move just 10 minutes south of Cairns - and this 3.67ha (9.0 acre) site is centrally located to take advantage of the activity happening around it. Residents who live on the south side of Cairns like to stay on the south side of Cairns - even as their life circumstances change. It is also a rapidly growing area which is popular with young families.

This medium density development site could be ideally suited to a number of uses - possibly as a quality residential development to cater to district residents downscaling from homes in the area, investment properties for those who like to have their investments close to them, or possibly as aged care facilities or retirement village - due to its centralised location close to all facilities (Subject to Cairns Regional Council approvals). Proposed Edmonton Business Park and the proposed Edmonton Business Centre are both in close proximity and the locally-renowned Piccone's IGA is just down the road.

0 BED | 0 BATH | 0 CAR

PRICE:

\$2,500,000 (+GST, if app.) Great Location and Size

OPEN FOR INSPECTION:

N/A



Mal Floyd
0418773524

malfloyd@atrealty.com.au

www.atrealty.com.au