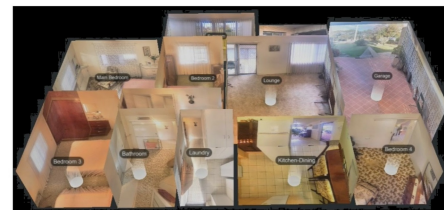


173 BRISBANE ROAD MONKLAND



173 Brisbane Road  
4 Bedroom, 1 Bathroom, 1 Wide Car Bay, Disabled Access, Shed



## FOR SALE

### LOWSET BRICK FOUR BEDROOM HOME

Local Gympie agents Ian and Janelle Pye proudly present  
173 Brisbane Road, Gympie. Right next door to the Monkland Store.

**ATTENTION!** Be quick to inspect this immaculate 4 bedroom lowset brick home. This home is set on a level flood free block close to Shopping, Schools, Sports Fields and not too far to Mitre 10 and Bunnings. The home has level wide access from the garage. The hallway and doorways are wide enabling disabled access. All the work has been thoughtfully done for you. You had better be quick to inspect at this weekends' Open Homes or by private appointment.

**NOTE:** Park on the property when you visit the Open Home.

Benefits of living at 173 Brisbane Road, Monkland are:-

- Lowset Brick 4 Bedroom Home
- Good user-friendly Kitchen inc Dishwasher & Pantry
- Separate Dining area
- Four large bedrooms - 2 with built-in-robos
- Large Lounge that opens out onto an enclosed front balcony
- Split System Air-Conditioner in Lounge
- Air-Conditioning Main Bedroom
- Lots of storage space
- Wide Laundry Inc Lots of Storage
- Wide Car Garage allows easy access to the Kitchen
- Wide Hallway and Doorways for wheelchair access if needed
- Ramped at the rear of the property
- Fenced on three sides
- Low maintenance Garden
- Good Powered Tool Shed/Workshop
- Quiet established neighbourhood
- Level 718sqm block - minimal mowing and yard maintenance

Built to last and impress.

There's a welcoming feeling here - make this your home.

Beautifully maintained solid lowset brick homes are becoming rare in Gympie so if you're in interested, be very quick!

4 BED | 1 BATH | 1 CAR

#### PRICE:

Offers Over \$260,000 REDUCED

#### OPEN FOR INSPECTION:

N/A

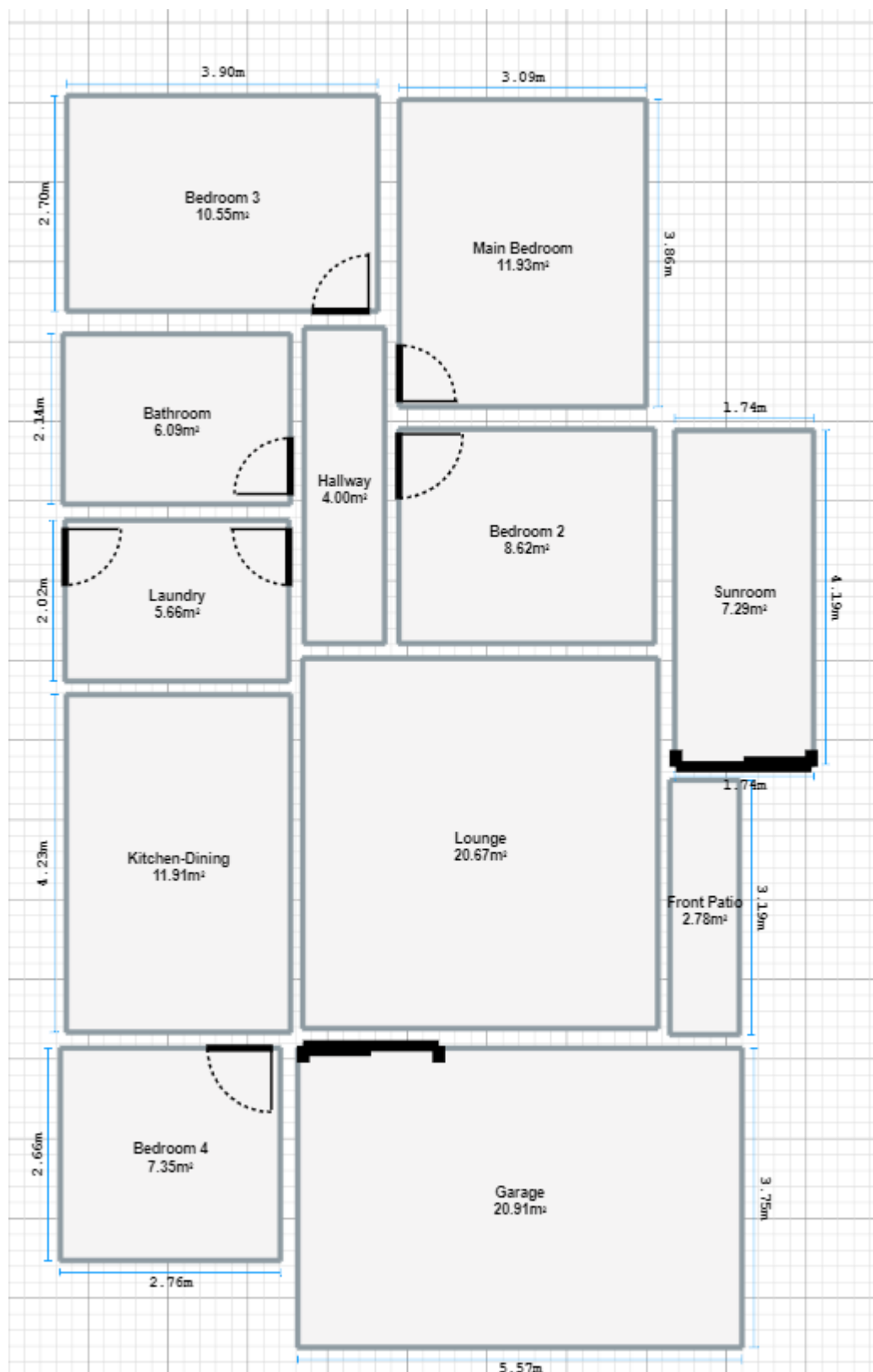


**Ian and Janelle Pye**

**0437778111**

[ianpye@atrealty.com.au](mailto:ianpye@atrealty.com.au)

[www.atrealty.com.au](http://www.atrealty.com.au)



Disclaimer: Please note this floor plan is for marketing purposes and is to be used as a guide only. All dimensions are estimates only and may not be exact measurements.