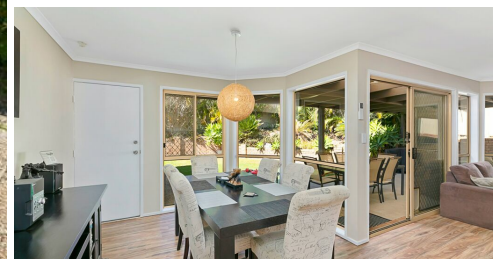
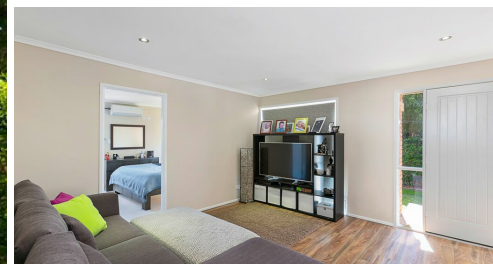
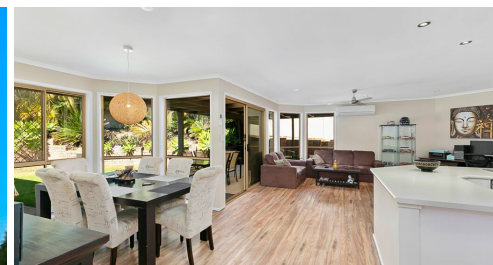


43A NARCAMUS CRESCENT, SHAILER PARK, QLD, 4128



**SOLD**

## SOLD! BEAUTIFUL RENOVATION, SUPERB BLOCK, 2 MINS TO HYPERDOME AND M1!

SOLD!

Ladies and gentlemen, we are excited to offer you this wonderful lifestyle opportunity in sought-after Shailer Park!

Situated on a 659m<sup>2</sup> block in an elevated location, this quality low-set family home offers space, comfort and style.

The family-friendly layout provides an excellent flow as well as a sensible separation of living space and bedrooms.

The formal lounge room leads through to the open and expansive air-conditioned family, dining and kitchen areas.

The main bedroom is separate from the others and includes air-con, ensuite, a private deck area and walk-in robe.

The other 3 bedrooms are sensibly positioned and a generous size, and feature ceiling fans and built-in wardrobes.

The bathroom and ensuite have been beautifully renovated and the well-equipped kitchen is modern and fresh too.

Outside, you'll enjoy the large outdoor entertainment area overlooking the grassy yard and well-presented gardens.

There is provision for side access and room for a shed if desired, and there is also space to install a swimming pool.

And all of this is near shops, parks and within the catchment area for Shailer Park and Kimberley Park State Schools.

**4 BED | 2 BATH | 2 CAR**

**PRICE:**  
\$555,000

**OPEN FOR INSPECTION:**  
N/A



**Ben Tafolo**  
**0419260719**  
tafolo@atrealty.com.au  
[tafolorealty.com.au](http://tafolorealty.com.au)