



FOR SALE

SECURE FAMILY TOWN HOUSE IN POPULAR RUNCORN

AFFORDABLE TOWNHOUSE - MINUTES WALK TO SHOPS AND FRUITGROVE TRAIN STATION

If you are searching for a secure but yet private three-bedroom townhouse close to amenities and schools, you have found it right here!

Your town house is located within a secure gated oasis area that makes you feel you have found your paradise right here passing the picture perfect swimming pool area. The home is has a nice street appeal and your own private courtyard, this is the perfect home for a family. The open plan design provides a relaxing feeling with a natural flow throughout the home, perfect when returning home after a busy day at work. The kitchen and the private covered patio area are ideal for entertaining. The kitchen features plenty of cupboard space with quality appliances such as oven, range hood and dishwasher. The three double bedrooms are well separated for privacy and have modern built-in wardrobes while the master bedroom has an ensuite. Perfectly positioned for both security and privacy, this home is located with close proximity to restaurants and cafés. Only minutes stroll to Fruitgrove train station making it so accessible. As an added convenience, the home has a secure garage with automatic garage door for ease of access.

- Spacious living and dining
- Great kitchen space that includes oven, hot plates, range hood and dishwasher
- Double bedrooms with built in wardrobes
- Tiled bathrooms
- Air-conditioned and ceiling fans
- Nice airy and leafy outlook
- Great privacy and security
- Secure garage with extra storage space
- Minutes access to the train and shops
- Access to Pool, Gym and BBQ area

Looking for a home or an investment property, this property has so much to offer. Call Ronny on 0449 150 001 for inspection times - always happy to help

3 BED | 2 BATH | 3 CAR

PRICE:

Offers over \$320,000

OPEN FOR INSPECTION:

N/A

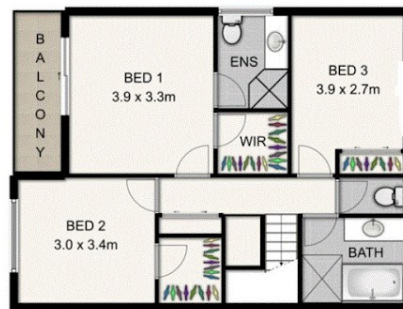


Ronny Cronqvist

0449150001

ronny@atrealty.com.au

www.atrealty.com.au



31/20 YOUNG PLACE, RUNCORN

This plan is not to scale. Areas and dimensions are approximate and therefore plan should only be used for illustrative purposes. Plants are decorative only.

Disclaimer: Please note this floor plan is for marketing purposes and is to be used as a guide only. All dimensions are estimates only and may not be exact measurements.