

**SOLD**

## YOU WIN WHEN YOU BUY POTENTIAL IN THE BEST LOCATION!

- Position and Potential galore ready for you to renovate and reap the rewards
- 2 Bedroom elevated apartment with views positioned for privacy towards the rear of a block of only 5
- Fantastic first home or investment opportunity.

This elevated two bedroom apartment is a wonderful option for investors looking to boost their property portfolios (current tenants want to stay) or first home buyers. Set to the quiet rear of a boutique block of only 5, this apartment includes a generous proportioned living room, a separate kitchen/meals area that is a light filled domain featuring floating timber floors and plenty of space to dine. There are two double bedrooms with built in robes, with the oversized master enjoying an extensive treetop outlook towards distant mountain ranges. The central bathroom has a shower over bath and laundry facilities. Single secure lock up garage with heaps of storage.

This handy location allows for an active lifestyle, with Gardiners Creek Trail, Holmesglen TAFE, Deakin University Ashburton Train Station, Monash Freeway access, Chadstone Shopping Centre, local shops and supermarkets all close by.

**2 BED | 1 BATH | 1 CAR**

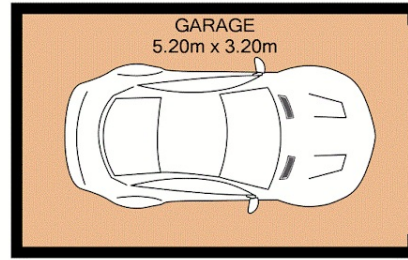
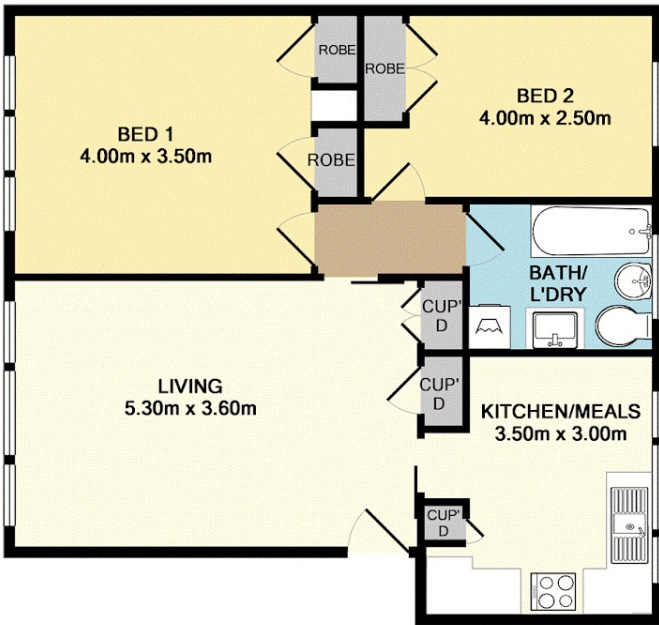
**PRICE:**  
**\$390,000**

**OPEN FOR INSPECTION:**  
**N/A**



**Dennis Tana**  
**0424583271**

dennis.tana@atrealty.com.au  
[www.atrealty.com.au](http://www.atrealty.com.au)



TOTAL APPROX. FLOOR AREA 79.9 SQ.M. (860 SQ.FT.)

Whilst every attempt has been made to ensure the accuracy of the floor plan contained here, measurements of doors, windows, rooms and any other items are approximate and no responsibility is taken for any error, omission, or mis-statement. This plan is for illustrative purposes only and should be used as such by any prospective purchaser. The services, systems and appliances shown have not been tested and no guarantee as to their operability or efficiency can be given  
Made with Metropix ©2017

Disclaimer: Please note this floor plan is for marketing purposes and is to be used as a guide only. All dimensions are estimates only and may not be exact measurements.