



# FOR SALE

## RARE OPPORTUNITY – DON'T MISS OUT!!

Presenting to the market this magnificent three bedroom, two bathroom unit on the Forth level of the tightly held "Bayview Mansions" situated high on the hill at the end of a quiet cul-de-sac with secure double lock up garage, pool, tennis court, sauna and lush grounds. Only 10mins from the CBD and airports this is one not to overlook!

Where 1980's Luxe Hotel meets the 21st Century... entering this unit is like stepping back in time only with new carpet and modern furniture! Experience the spaciousness of that era with an oversized air-conditioned living area, formal dining, kitchen with meals area that overlooks the pool, barbeque courtyard and tennis court, large air-conditioned master suite with built in dresser, walk in robe and ensuite featuring stone bench tops. The master bathroom fits the picture of luxe with the corner spa and stone bench tops, there is a separate powder room and two other generous sized bedrooms both offering views, air-conditioning and built in robes.

The two enormous balconies provide an expanse of outstanding views to Mount Coot-tha, Moreton Bay and the City, a great place to start the day with sunrise and a cuppa or end the day with a glass of wine watching the sun go down and the city lights appear.

Located conveniently off the main drag just a short walk to Clayfield Train Station, Cafes and Restaurants and some of Brisbane finest schools and colleges you will love the position of Bayview Mansions.

Don't delay call Natalie today on 0419 689 309 to arrange a private inspection.

At a Glance:  
Sweeping Views from the 4th Floor  
2 Balconies  
Air-conditioning  
Separate Laundry  
Intercom  
Garbage Shoot  
Secure Parking – Double Lock up garage  
Swimming Pool & Spa  
Tennis Court  
Sauna

3 BED | 2 BATH | 2 CAR

### PRICE:

Suit Buyers above \$800,000

### OPEN FOR INSPECTION:

N/A



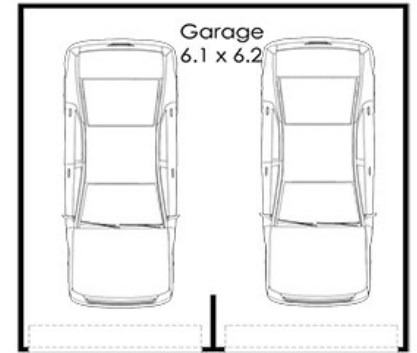
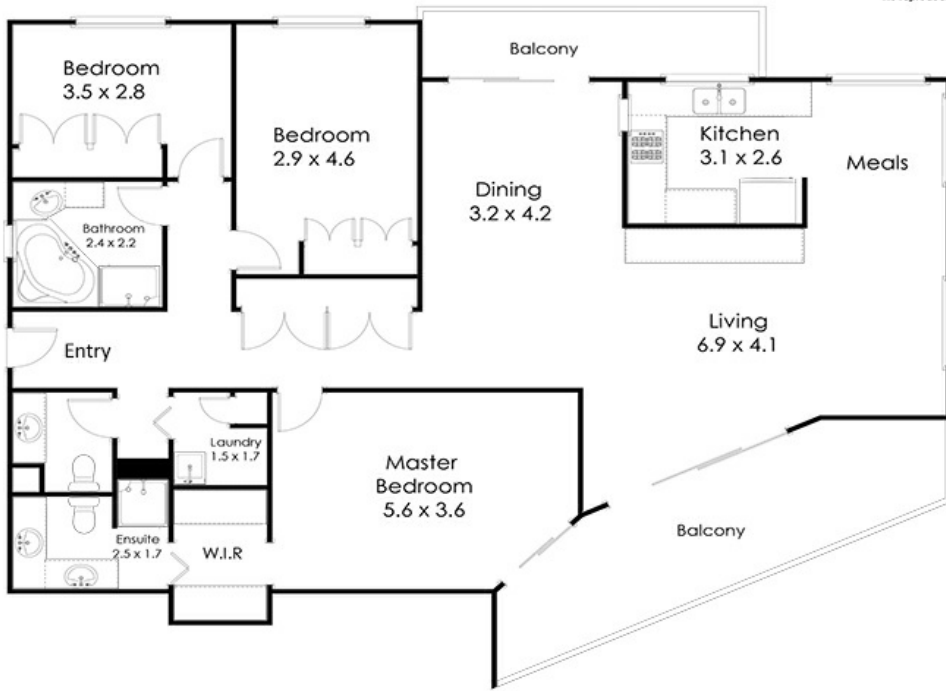
**Natalie Johnston**

**0419689309**

natalie@atrealty.com.au

Natalieatrealty

Whilst every attempt has been made to ensure the accuracy of the floor plan contained here, measurements of doors, windows rooms and any other items and structures are approximate and no responsibility is taken for any error, omission or mis-statement. Bathroom and kitchen fittings, cupboards and door types and laundry appliances and windows are tokens and approximate the actual fitting installed.  
This plan is for illustrative purposes and should be used as such by any prospective buyer.  
Plan drawn by Eagle Eye Photography Service, www.eagleeyeHQ.com.au Copyright 2018.  
All rights reserved.  
No reproduction without license, contact photographer for more information.



Apartment 13 26 Rees Avenue Clayfield 4011

@realty

Disclaimer: Please note this floor plan is for marketing purposes and is to be used as a guide only. All dimensions are estimates only and may not be exact measurements.

Natalie Johnston  
0419689309  
natalie@atrealty.com.au  
[Natalieatrealty](#)

@realty