

**SOLD**

## PROPERTY SOLD BY KARL STOPIC

SPACIOUS & COMFORTABLE LIVING – OPPOSITE PARK - SEASCAPES LOCATION!

This lovely home was designed for family living, stepping inside and you are greeted with both elegance and functionality. This spacious open plan home is low maintenance and is perfect for a growing family on a 551sqm block.

This sought after “Seascapes” location has a beautiful park located directly across the road with plenty of room for the children to play.

Enjoy the ultimate open plan living domain, encompassing a massive combined family, dining room and a designer kitchen. A separate home theatre room offers multiple entertaining options and is beautifully appointed.

The stunning gourmet kitchen is centrally located with easy service of the dining area - perfect for family gatherings. Boasting loads of cupboards, spacious breakfast bar, double fridge recess and a full range of quality appliances including a 5 burner gas cook top and 900mm oven.

Parents have their own retreat wing including a romantic open bathroom with double vanities, walk in robe and sliding glass door access to the alfresco area.

The left wing on the home hosts a children's activity room, all three family bedrooms which come complete with built in robes, serviced by the conveniently located family bathroom and laundry.

Additional highlights include;

- Office nook located off the kitchen
- Children's activity area
- Quality floor coverings
- Security alarm system
- Ducted air conditioning
- Double door entry with hallway
- Theatre Room
- Large open kitchen including 90cm Blanco range hood, cooktop, oven and stainless dishwasher
- Gas bayonet in the family/meals area

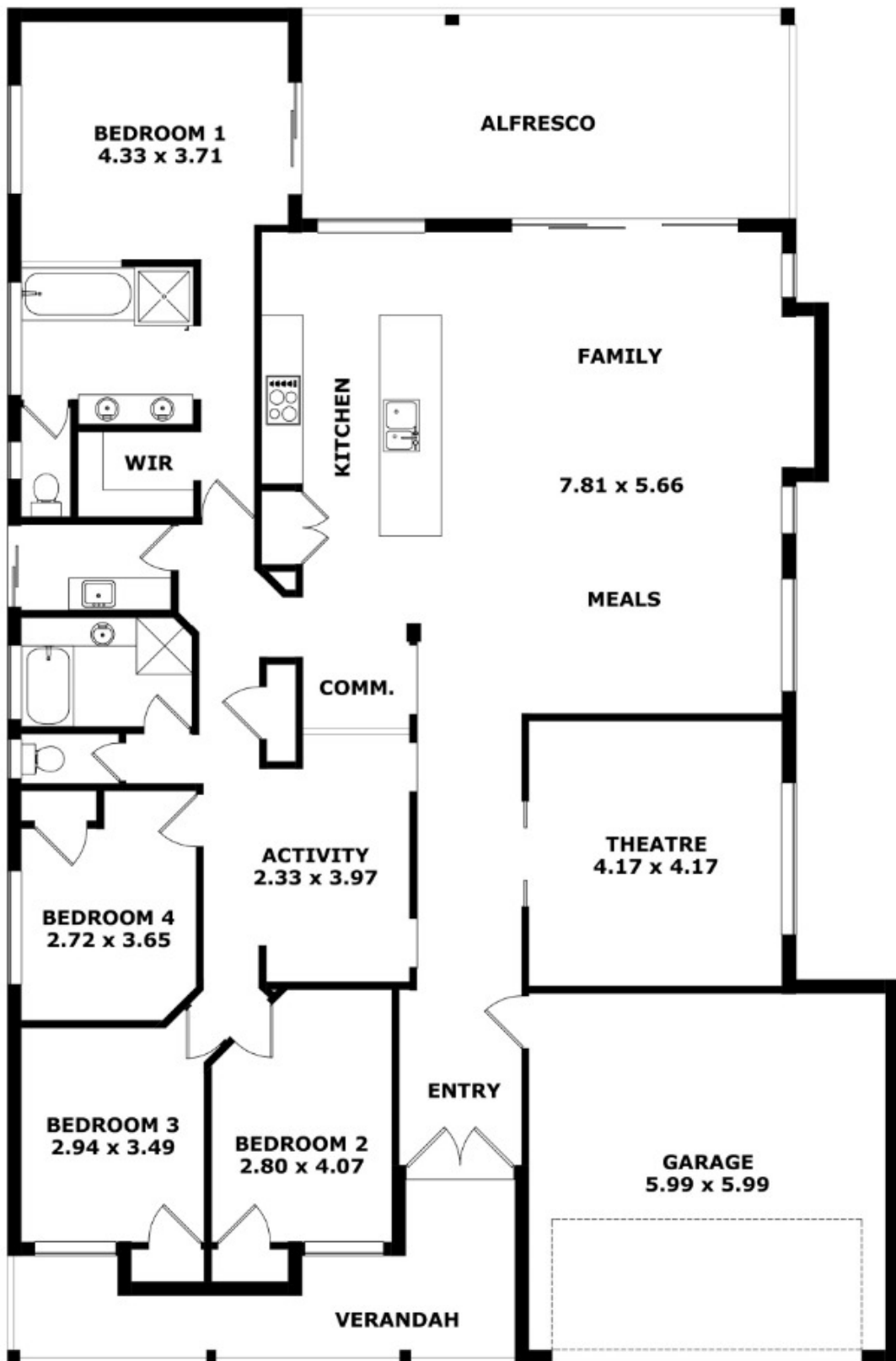
**4 BED | 2 BATH | 2 CAR**

**PRICE:**  
**\$370,000**

**OPEN FOR INSPECTION:**  
**N/A**



**Karl Stopic**  
**0416231528**  
karlstopic@atrealty.com.au  
[www.atrealty.com.au](http://www.atrealty.com.au)



## 4 SANTALUM CIRCUS, HALLS HEAD

Disclaimer: Please note this floor plan is for marketing purposes and is to be used as a guide only. All dimensions are estimates only and may not be exact measurements.

0416 231 528

KARLSTOPIC@ATREALTY.COM.AU

**Karl Stopic**  
0416231528

karlstopic@atrealty.com.au

www.atrealty.com.au

@realty

@realty

Whilst every attempt has been made to ensure the accuracy of the floorplans contained here, measurements of doors, windows and rooms are approximate and no responsibility is taken for any error, omission or mis-statement. These plans are for representation purposes only.