



SOLD

CLASSIC FEDERATION HOME... UNDER OFFER

This property is the perfect combination of a classic looking federation home with mass street appeal and a quiet sort after location. The home was renovated and extended approximately 8 years ago so the floorplan now consists of three double size bedrooms, large open plan living room, modern kitchen with dining and a large combined bathroom /laundry. The fenced block of approximately 607 m2 is near level with access down the side to the backyard, perfect for a shed or garage. The veranda is on two sides of the home with French doors allowing access from the kitchen/ dining and living room. If you have been searching for that perfect combination of classic home in a sort after location then don't miss this opportunity. NOTE: We are a local Nambucca Valley Agency with our head office on the Gold Coast.

We make no representation or warranty as to the accuracy, reliability or completeness of the information relating to the property. Some information has been obtained from third parties and has not been independently verified. Accordingly, no warranty, representation or undertaking, whether express or implied, is made and no responsibility is accepted by us as to the accuracy of any part of this, or any further information supplied by or on behalf our behalf, whether orally or in writing.

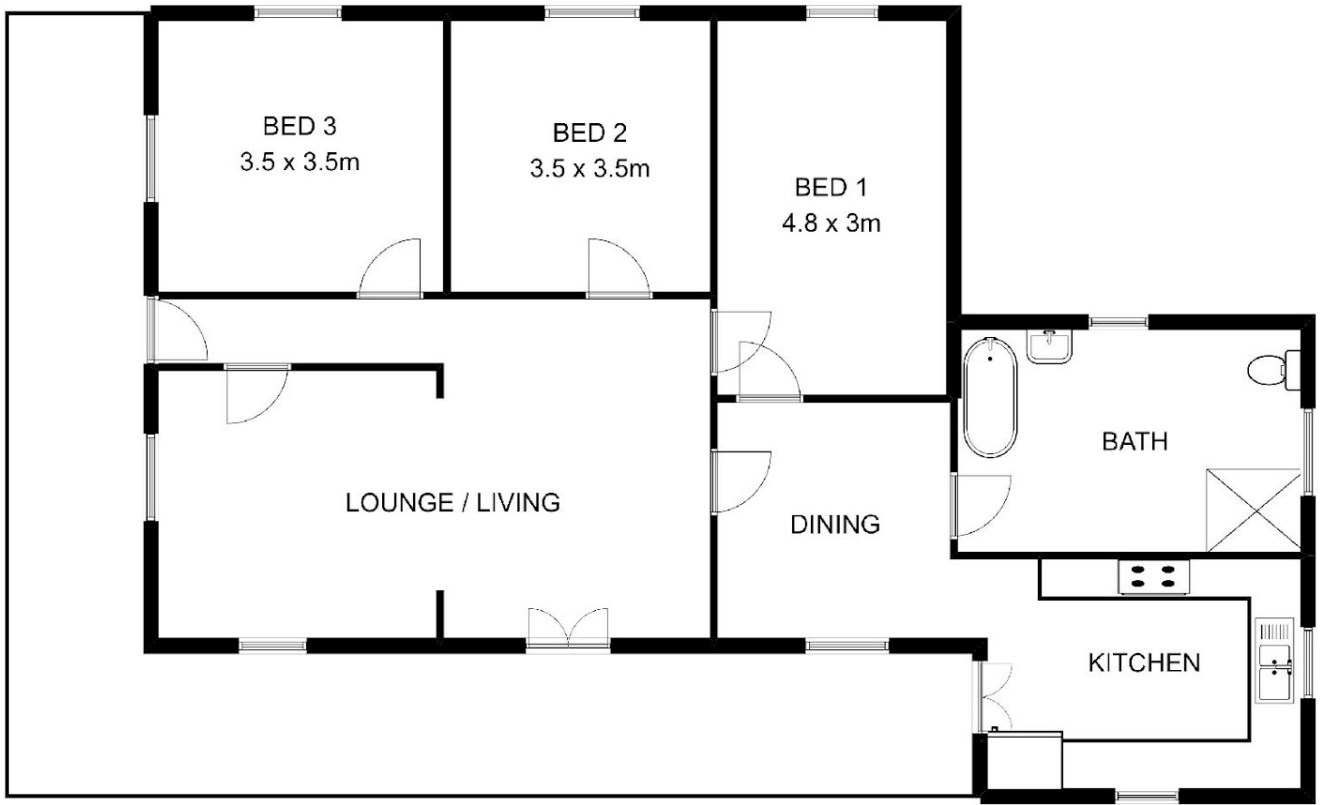
3 BED | 1 BATH | 0 CAR

PRICE:
\$277,000

OPEN FOR INSPECTION:
N/A



Craig Bellamy
0412080287
craig.bellamy@atrealty.com.au
www.atrealty.com.au



23 CONAN STREET, BOWRAVILLE

This floor plan is not to scale. Areas and dimensions are approximate and therefore plan should only be used for illustrative purposes.

Disclaimer: Please note this floor plan is for marketing purposes and is to be used as a guide only. All dimensions are estimates only and may not be exact measurements.