



SOLD

VERSATILE LIFESTYLE ACREAGE WITH RESIDENCE AND SEPARATE UNIT.

Located in the beautiful township of Loch in a private and idyllic setting on approximately 2.2 acres with 3 acres of river lease with the Bass river running along its western boundary. Superbly built residence giving a range of options. Potential income earner with separately metered and fully self contained unit including private outdoor area. The unit is successfully running as an Air BnB but would be ideal for elderly parents, extended families or even a teenagers retreat. The principal home features 3 bedrooms plus study with an ensuite to the main, 2 living areas and a well appointed kitchen. The unit features 2 bedrooms central bathroom living room and a kitchen / diner. Extensive manicured gardens offering expansive lawn area and fully fenced 1.2 acre paddock with water and shelter suitable for a horse or ponies. Both properties are immaculately presented having been recently repainted, and recarpeted. New stylish plantation shutters fitted throughout the main residence. Ample shedding, 4 car accommodation and plenty of parking space for a caravan or boat. A vast variety of native animals frequent the property including wallabies wombats possums, echidnas and a range of birdlife. Loch is a popular tourist destination with its cafés, craft shops, boutique brewery, market and festivals throughout the year. A fantastic opportunity with so much to offer! For more details contact Peter Powell on 0458 555 099

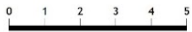
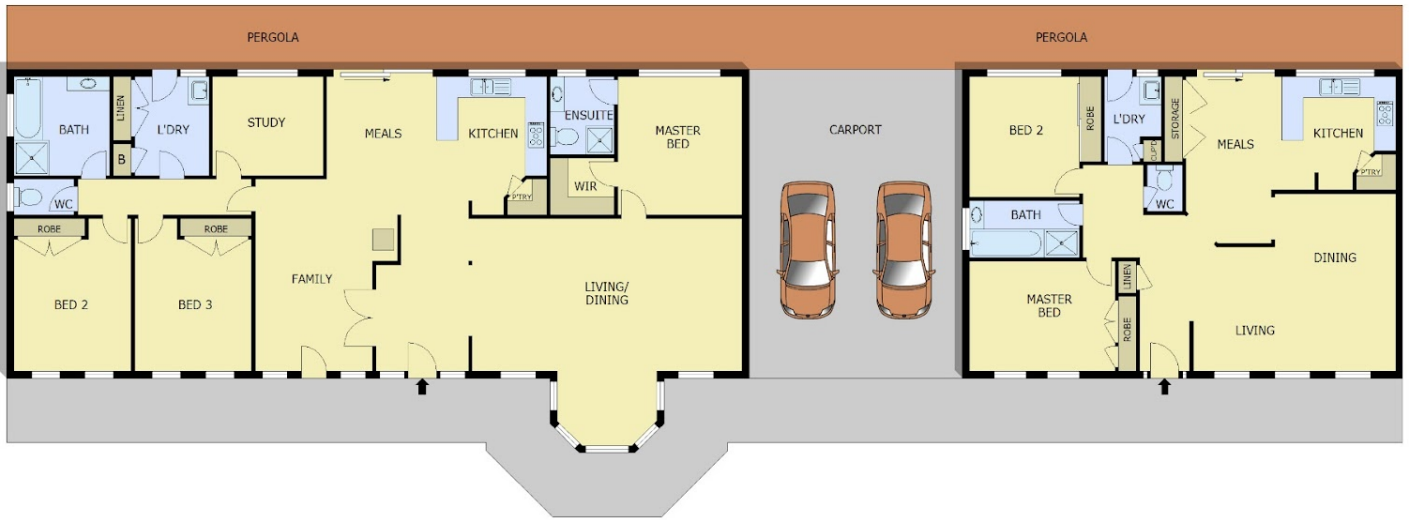
6 BED | 3 BATH | 4 CAR

PRICE:
\$875,000

OPEN FOR INSPECTION:
N/A



Peter Powell
0458555099
peterpowell@atrealty.com.au
[Peter Powell Property](#)



Scale in metres. Indicative only. Dimensions are approximate. All information contained herein is gathered from sources we believe to be reliable. However we cannot guarantee its accuracy and interested parties should rely on their own enquiries.



85 Ferriers Road, Loch

Disclaimer: Please note this floor plan is for marketing purposes and is to be used as a guide only. All dimensions are estimates only and may not be exact measurements.