



FOR SALE

A SPACIOUS PENTHOUSE APARTMENT LOCATED JUST STEPS FROM SHOPS AND CAFES

"Loving Nundah" Real Estate experts, Mark Roemermann & Andrew Emms present ...

- * Light-filled, modern and move-in ready
- * Stylish finishes and a neutral colour scheme
- * Spacious floorplan that feels like a standalone home
- * Multiple living spaces inside and out
- * Delightful views from north to south
- * Live just a short walk from shops and cafes
- * Toombul Shopping Centre is across the road
- ~ it's great when your neighbours do a \$35 million makeover
- ~ totally revamped fresh food and fashion malls
- ~ food court renovations are happening in March
- ~ a brand new dining and entertainment precinct is coming
- ~ Queensland's first Archie Brothers Cirque Electriq
- * Easy access to Toombul train and bus depots
- * Easy access to the highway for easy travel to the coast
- * Extraordinary value for a two-storey penthouse
- * You can even choose your new carpet when buying
- * Purchase with transparency and confidence ... Click 2 Buy

Located within walking distance of everything Nundah village has to offer is this stylish, modern penthouse apartment that is sure to impress. The spacious two-level floorplan makes this dual-level apartment feel more like an elevated home, without the maintenance.

Living stretches over two levels with three good-sized balconies allowing cool cross breezes to flow throughout the home. There is an abundance of natural light that streams in, while a fresh colour palette enhances the sense of space.

In true luxurious fashion, the master suite is housed on the upper level. Complete with built-in robes, a huge ensuite, access to two balconies and a sitting area, this is a true retreat where you

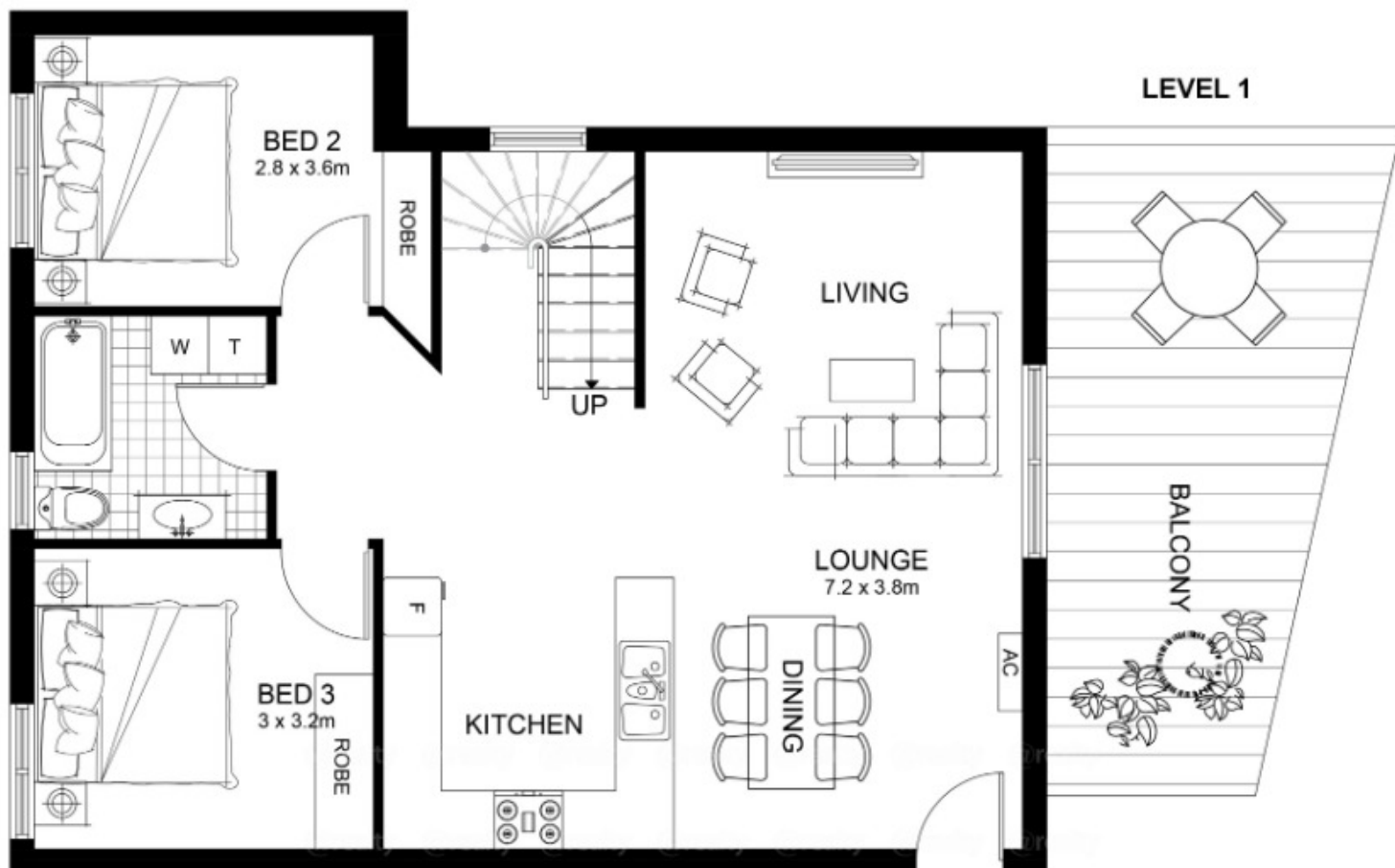
3 BED | 2 BATH | 2 CAR

PRICE:
For Sale

OPEN FOR INSPECTION:
N/A



Mark Roemermann
0413877230
markroemermann@atrealty.com.au
www.atrealty.com.au



Disclaimer: Please note this floor plan is for marketing purposes and is to be used as a guide only. All dimensions are estimates only and may not be exact measurements.

Floor plan created by Rolley Photo Media. All rights reserved, Copyright 2016

TOTAL AREA: 214.7 m²

40 / 6 - 12 Grace Street, Nundah

Mark Roemermann

0413877230

markroemermann@atrealty.com.au

www.atrealty.com.au

