



FOR SALE

FABULOUS COASTAL FAMILY HOME

Centrally located 4-beds; 2-baths; 2-car; large pool residence, quiet street within sought precinct after Mermaid Waters. The opportunities are endless for this home which is a perfect fit for our coastal lifestyle. Single level residence offers relaxed space, is move-in ready with a practical floor plan. You'll enjoy four bedrooms, main bedroom features a modern ensuite and every lady's dream of a huge walk in robe, spacious bright and airy family room flows through to the separate dining and lounge room, kitchen features granite benchtops and stainless-steel appliances.

The fully fenced private backyard features a large sparkling pool that captures the all-day sun, flowing onto the covered entertaining area.

Local schools including early learning, primary, incorporates the zoning for both Miami and Merrimac State High Schools and Bond University, are all just a stone's throw away and just a short stroll to the public transport stops.

This prime piece of property is ready for immediate occupancy.

KEY FEATURES

- Large fenced Inground Pool; Outdoor Entertaining Area
- 4 generous sized bedrooms - Master Suite with Ensuite/ Walk-in Robe
- Modern classic kitchen with granite Benchtops
- Freshly painted, new carpeted throughout and blinds throughout
- 2 Bathrooms both well appointed one with bath and shower
- 2 Large living spaces open out to the pool and an one covered patio
- Air Conditioning for year round comfort
- Security, Alarm system, Double door garage
- 672 sqm allotment in a quiet street within the sort after precinct Mermaid Waters

NEARBY SCHOOLS

- Miami State School - 1.0km
- Miami State High School - 2.6km
- Merrimac State High School - 2.6km
- Broadbeach State School - 4.9km

If you could imagine yourself living here please attend one of our Open Homes or arrange a

4 BED | 2 BATH | 2 CAR

PRICE:

Offers Above \$775,000.

OPEN FOR INSPECTION:

N/A

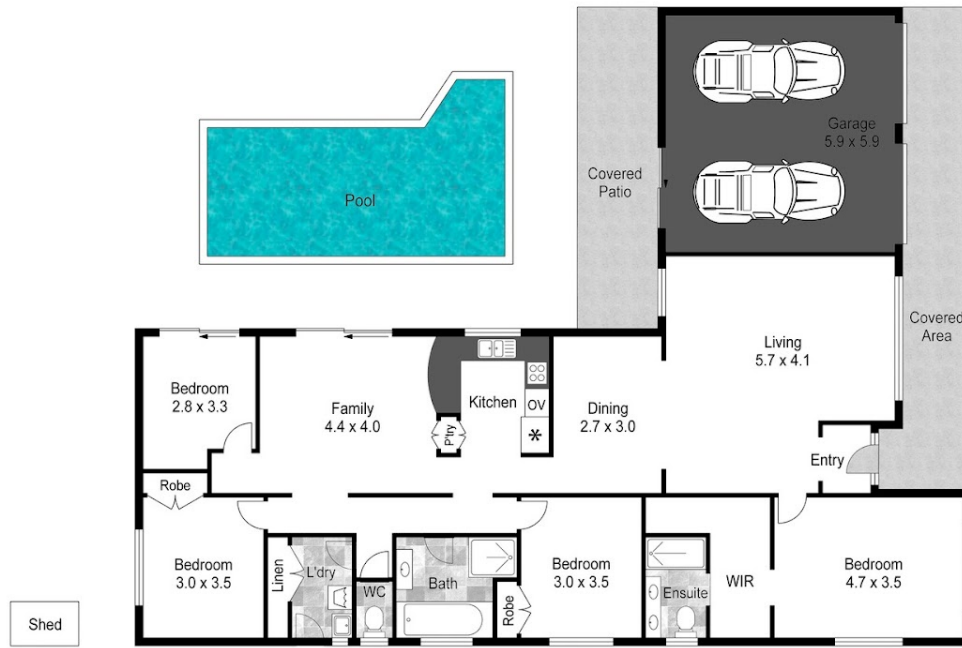


Gaylia Griffiths

0419879037

gayliagriffiths@atrealty.com.au

www.atrealty.com.au



Internal : 156.5m²
 Garage : 33.6m²
 External : 37.3m²
Total : 227.4m²
 (approx)

Disclaimer:

Every attempt is made to ensure accuracy. However all measurements are approximate. This floor plan is for illustrative purpose only & is not to scale.



Disclaimer: Please note this floor plan is for marketing purposes and is to be used as a guide only. All dimensions are estimates only and may not be exact measurements.