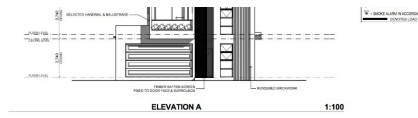


ADDRESS UPON REQUEST



SOLD

STUNNING FAMILY HOME PACKAGE AVAILABLE

Your dream house could be here!

Main details of inclusion List:

- * Ducted Air-conditioning
 - * Raised 2740mm ceilings heights
 - * Exclusive Facade
 - * 20mm Smart Stone Bench Tops
 - * 900mm Stainless Steel European made with 900mm Gas Cooktop/Electric Oven - and R'hood
 - * European made Dishwasher
 - * European Designer Tapware and Basins
 - * Variety of Designer Light Fixtures
 - * Designer Ceramic Tiles
 - * Window Coverings, FlyScreens & security screen to all Windows / Door
 - * Fully Landscaped / Fenced
 - * Driveways and Paths (Stencilled and Exposed Aggregate Designs)
 - * Finance solutions available
 - * These are only a few of our Premium Designer Inclusions available, and don't delay!
- For inspection please call Ashraf Payman

5 BED | 3 BATH | 2 CAR

PRICE:
\$195,000

OPEN FOR INSPECTION:
N/A



Ash Payman
0469385846
ash@atrealty.com.au
www.atrealty.com.au