



SOLD

FAMILY FAVOURITE WITH ENTERTAINING APPEAL- ROI 6.3%

In an appealing family focused position, this home offers attractive interiors and a series of engaging outdoor entertaining spaces. A flexible floor plan of four bedrooms plus separate dining and family room, plus expansive indoor media area and outdoor entertaining space. A galley-style modern kitchen is equipped with stainless steel appliances and gas stove making this a beautiful, central space. There are three bedrooms and office, two bathrooms, one with semi-ensuite access to the main bedroom. Additional features include airconditioned bedrooms, single bay shed, double under cover carport, double side access, crimsafe, security screens, and fully fenced yard. Plenty of space for the kids to play and for a swimming pool. This home is ideal for families, located only steps from Bentley Park College, day care centre, cafes, shops and public transport.

Current Fixed Lease to the 11/1/2019 at \$440 per week.

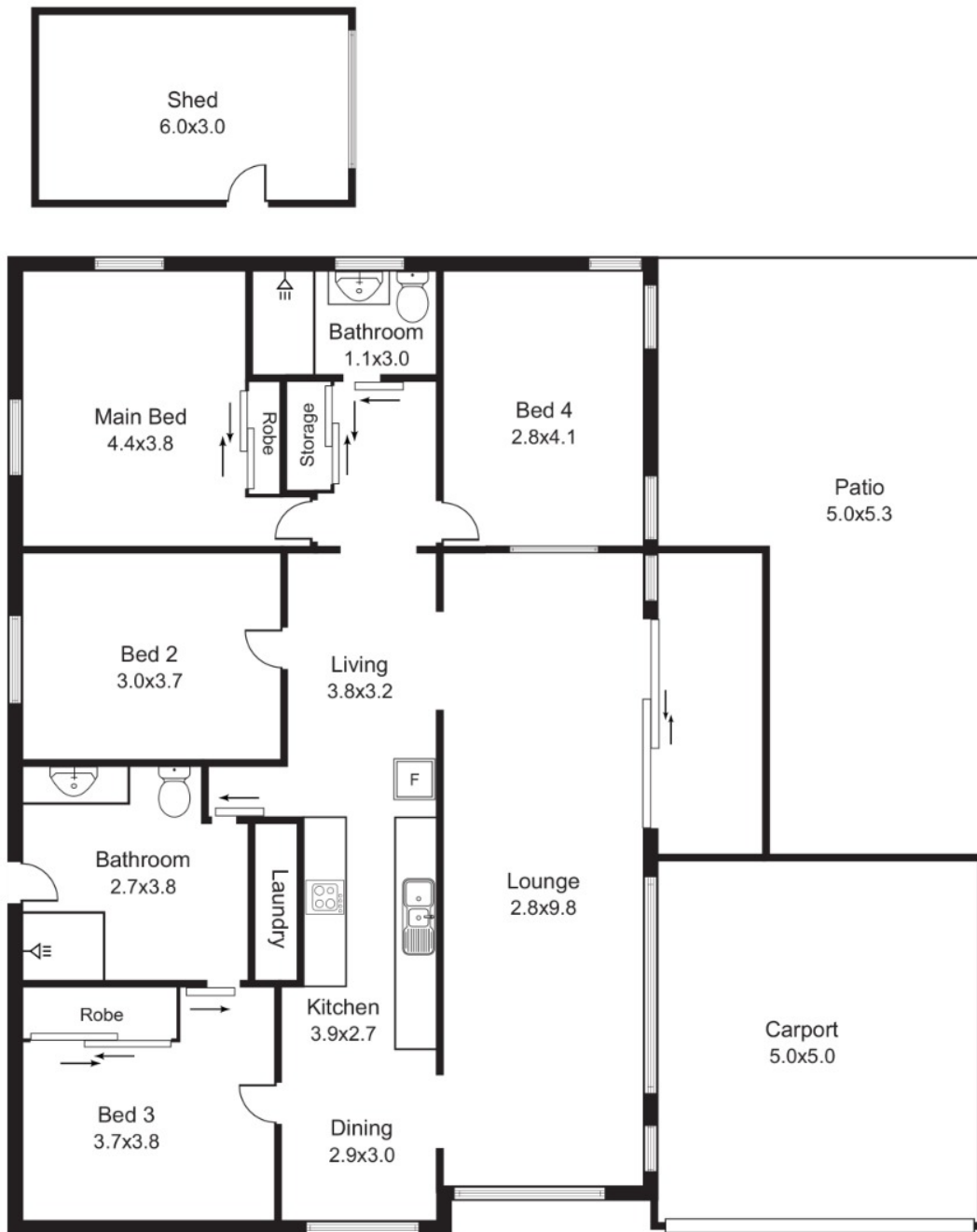
4 BED | 2 BATH | 3 CAR

PRICE:
\$358,000

OPEN FOR INSPECTION:
N/A



Zoe Wicks
0477114778
zoewicks@atrealty.com.au
www.atrealty.com.au



Illustrative Purposes only Dimensions are approx.
This drawing is not to scale

Disclaimer: Please note this floor plan is for marketing purposes and is to be used as a guide only. All dimensions are estimates only and may not be exact measurements.