



SOLD

AFFORDABLE FAMILY HOME.. REDUCED

Finding an affordable four bedroom brick and tile home is getting harder by the day. This centrally located home is perfect for a young growing family that need four bedrooms with an additional office / rumpus room with its own bathroom.

Other features:

- Large level backyard with side access
- Bush outlook from the back deck
- Large open plan kitchen/ dining and lounge room
- Close to schools (900m) shopping centre (1.6km) and the Nambucca River for boating and fishing (2 km)

This is a fantastic chance to break into the real estate market and secure your first home, call today to inspect.

NOTE: We are a local Nambucca Valley agency with our head office on the Gold Coast.

We make no representation or warranty as to the accuracy, reliability or completeness of the information relating to the property. Some information has been obtained from third parties and has not been independently verified. Accordingly, no warranty, representation or undertaking, whether express or implied, is made and no responsibility is accepted by us as to the accuracy of any part of this, or any further information supplied by or on behalf our behalf, whether orally or in writing.

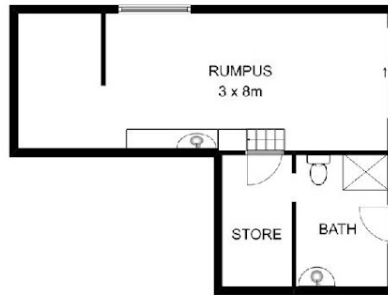
4 BED | 2 BATH | 1 CAR

PRICE:
\$315,000

OPEN FOR INSPECTION:
N/A



Craig Bellamy
0412080287
craig.bellamy@atrealty.com.au
www.atrealty.com.au



INT: 193 sqm
 EXT: 11 sqm
 TOTAL: 204 sqm

171 WALLACE STREET, MACKSVILLE

This floor plan is not to scale. Areas and dimensions are approximate and therefore plan should only be used for illustrative purposes.

Disclaimer: Please note this floor plan is for marketing purposes and is to be used as a guide only. All dimensions are estimates only and may not be exact measurements.