

SOLD

OUTSTANDING VALUE - MOTIVATED SELLER ASKING FOR OFFERS

Amazing value, well designed and located in the lovely Genesis Estate Coomera. This modern design, well appointed property features all the creature comforts a family needs. Featuring a very welcoming entry through large double timber doors and flows freely through to the dining, kitchen and family / living area. 4 Bedrooms including a huge master, brilliant en-suite with double shower and separate toilet plus generous walk in robe. 3 additional bedrooms sharing the main bathroom with the bath and shower separated from the double vanity and toilet. The separate lounge room located at the front of the house and away from bedrooms and the main living area. Ducted air conditioning with every room zoned for additional comfort.

The dining and living areas are centrally located surrounding the kitchen that features Stone bench tops, 900 mm Stainless Steel appliances, ample cupboard space complimented by a generous size walk in pantry. Don't worry about your fridge not fitting as the space is big enough for the largest of fridges.

The Alfresco area opens out from both the dining and living areas allowing perfect ease for entertaining, with a great size yard for the kids and to build your own pool. Last but not least, the laundry presents good storage and cupboard space and direct access to the clothesline. A plumbed rainwater tank to toilets saves you on water costs throughout the year.

Inclusions in this lovely property:

- Master with en-suite and walk in robe
- 3 additional Bedrooms all with built in's
- 2 Bathrooms
- Open plan living
- Modern kitchen with walk in pantry
- 20 mm stone bench tops
- Stainless steel appliances
- Great size private Alfresco
- Laundry with storage
- Good Storage
- Ducted Air Conditioning zoned to each room

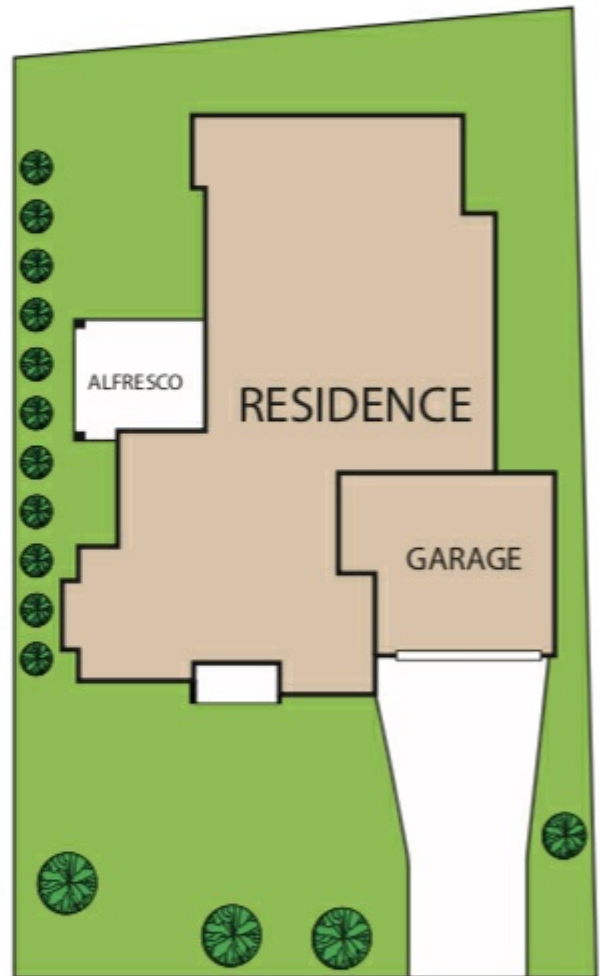
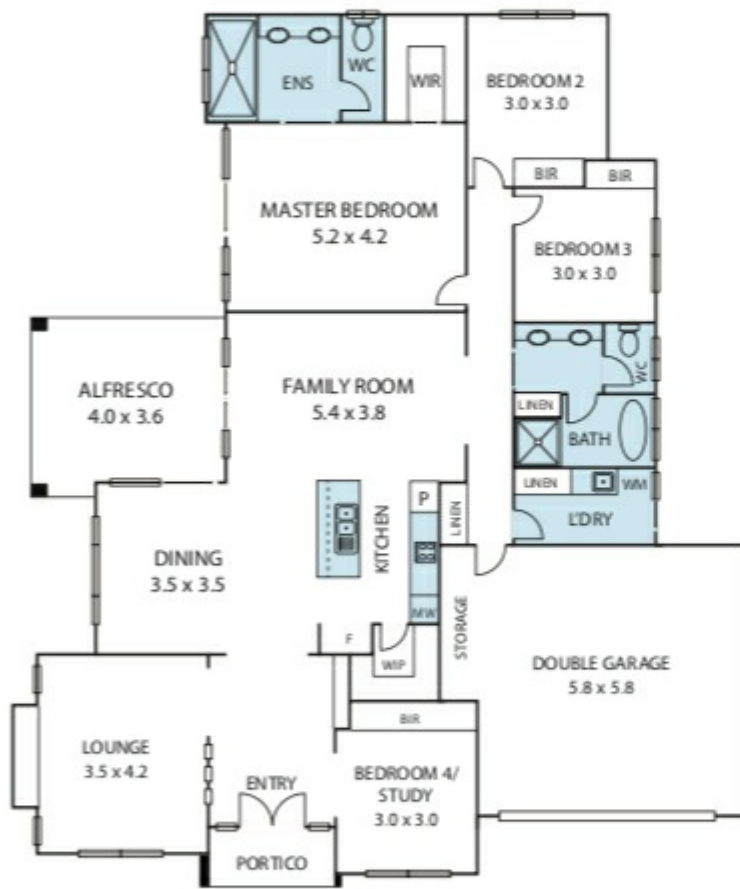
4 BED | 2 BATH | 2 CAR

PRICE:
\$560,000

OPEN FOR INSPECTION:
N/A



Aaron Squires
0466824668
freedomgroup@atrealty.com.au
www.atrealty.com.au



Disclaimer: Please note this floor plan is for marketing purposes and is to be used as a guide only. All dimensions are estimates only and may not be exact measurements.

Whilst every attempt has been made to ensure the accuracy of the floor plan contained here, measurements of doors, windows, rooms and any other items are approximate and no responsibility is taken for any error, omission, or misstatement. This plan is for illustrative purposes only and should be used as such by any prospective purchaser.