



SOLD

EXECUTIVE FAMILY LIVING

This contemporary home's generous proportions and enviable location within the acclaimed Vermont Secondary College zone are perfectly matched with the modern family lifestyle. Boasting a sense of community in a private enclave of quality homes; the interior showcases a large family room, dining area and showpiece kitchen equipped with an impressive 5-metre breakfast bar wrapped in Caesarstone, quality appliances and crisp high-gloss cabinetry providing excellent storage options. From here, there's a seamless transition outdoors to a large alfresco deck bathed in ambient light; offering an enjoyable place to recline, dine and entertain. Placed on the upper floor is the generous size master haven with a walk-in robe and tasteful ensuite; whilst three additional robed bedrooms share the spotless main bathroom and adjoining toilet. Finishing touches include ducted heating, evaporative cooling, new carpet, freshly repainted interior and a double auto garage with internal access. The coveted location adds to the appeal, minutes from Eastlink, golf courses and bus services, Heatherdale Train Station, Vermont Primary School, Eastland Shopping Centre, Brentford Square and a host of local parks.

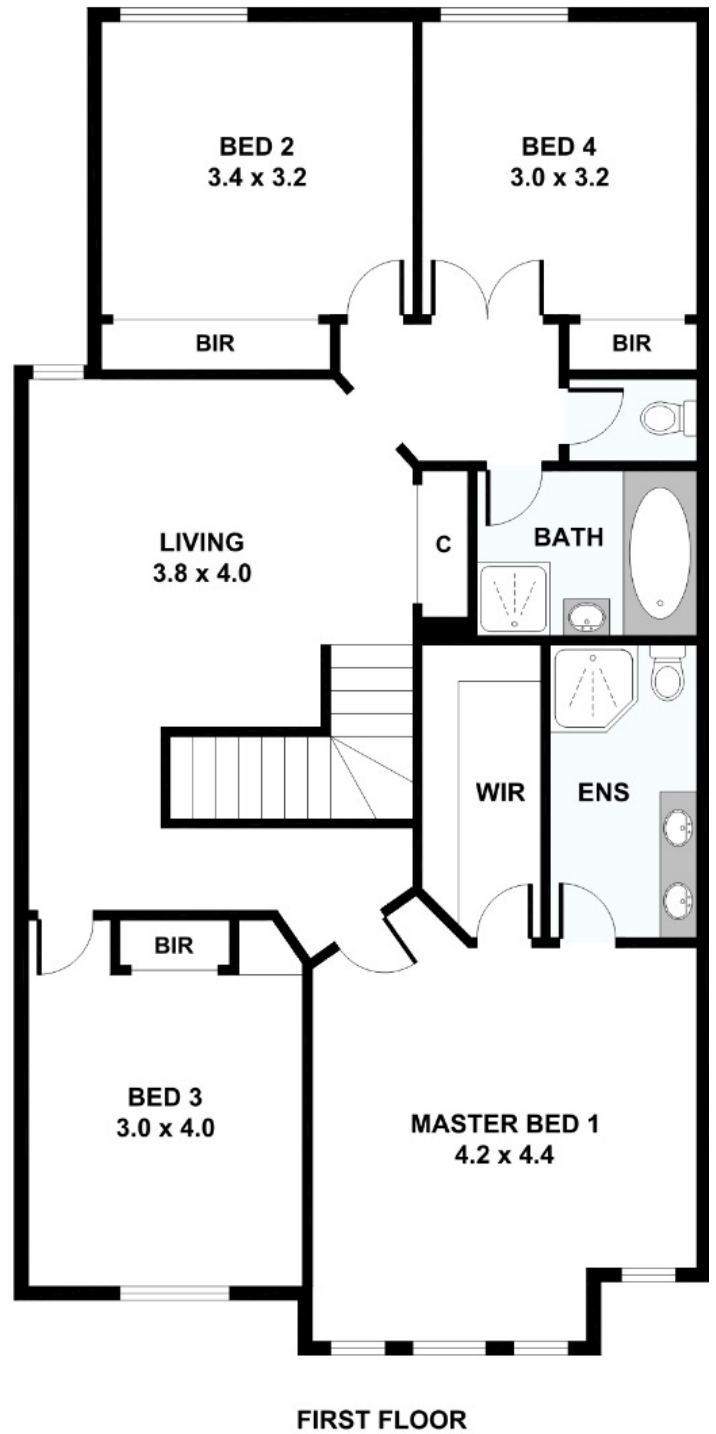
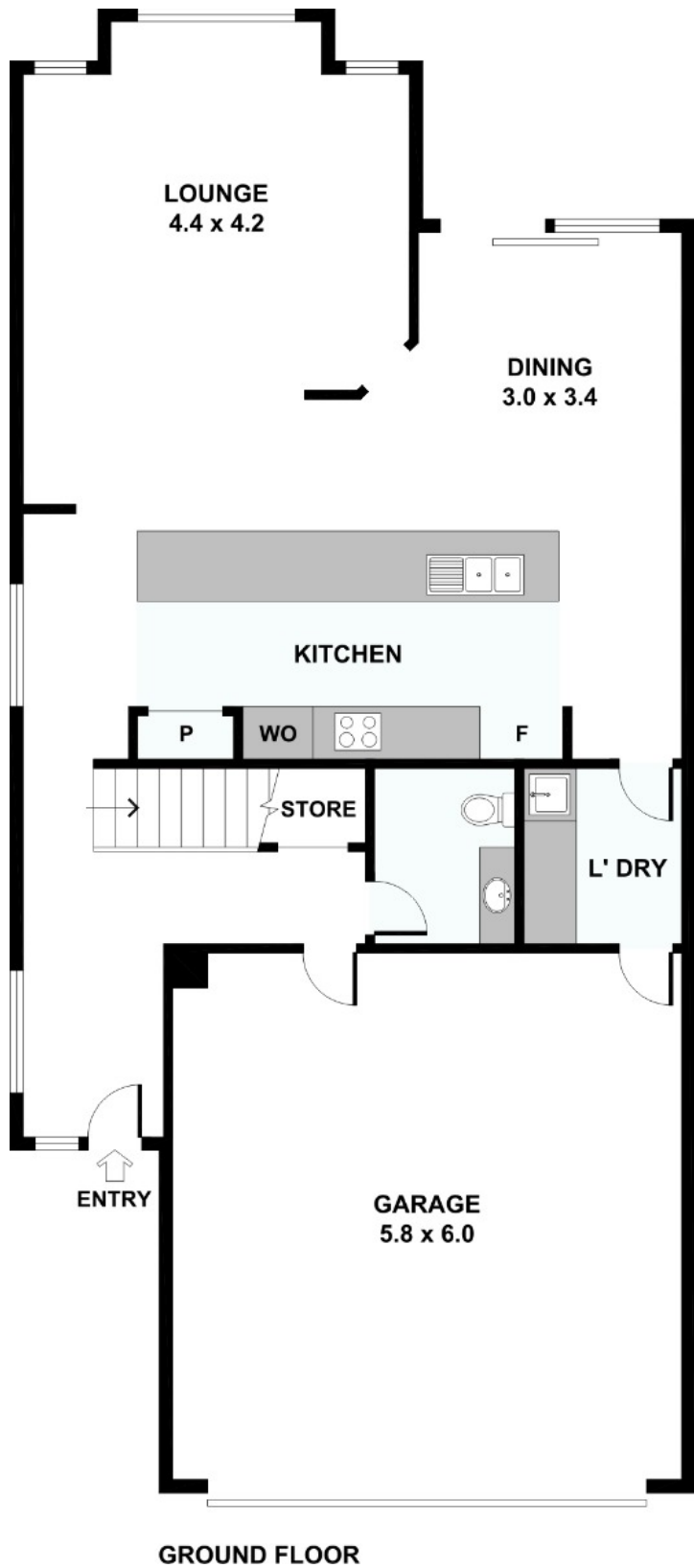
4 BED | 2 BATH | 2 CAR

PRICE:
\$861,500

OPEN FOR INSPECTION:
N/A



Craig Taylor
0412566800
craig@atrealty.com.au
www.atrealty.com.au/craigtaylor



Disclaimer: Please note this floor plan is for marketing purposes and is to be used as a guide only. All dimensions are estimates only and may not be exact measurements.