



SOLD

UNDER OFFER MORE WANTED!

This beautifully presented 3 BEDROOM 79sqm villa has been tastefully renovated transforming it for the new owners to move in with all the hard work done. This is the largest villa in the private group of 11 which boasts a separate DINING ROOM or THIRD BEDROOM.

The enchanting rear north facing garden (60 sqm approximately) is a tranquil retreat with lush gardens and an all year-round alfresco area with an outdoor blind and ceiling fan to accommodate all seasons. Situated in a cul-de-sac-position with easy access to public transport into the CBD from Wanneroo Road or head down the beach from Morley Drive.

This is an opportunity not to be missed, make a private viewing appointment today with Shendelle 0412 713 911.

FEATURES:

- Brand new kitchen with quality appliances, electric glass cooktop, under-bench oven, built-in rangehood, overhead cupboards, microwave recess, breakfast bar seating
- New carpets in bedrooms and block-out roller blinds
- Front lounge room with faux log gas fireplace on tiled hearth
- 2 bedrooms with built-in robe (master bedroom)
- Good size bathroom with heat lamps, composite stone bench-top and glass shower screen
- Separate laundry with built-in linen and separate WC
- Bamboo-laminate floors throughout living areas
- LED lighting throughout
- Ducted air-conditioning throughout
- Freshly painted throughout
- Private carport parking with height clearance
- Security window and fly-screen doors
- Spacious alfresco with ceiling fan, outdoor blind
- Mains reticulated front garden and grass
- Council Rates: \$1419 pa
- Water Rates: \$906 pa
- Strata Fees: \$579 per quarter

Register your interest with Shendelle Harding on 0412 713 911 to avoid missing out on this sensational home!

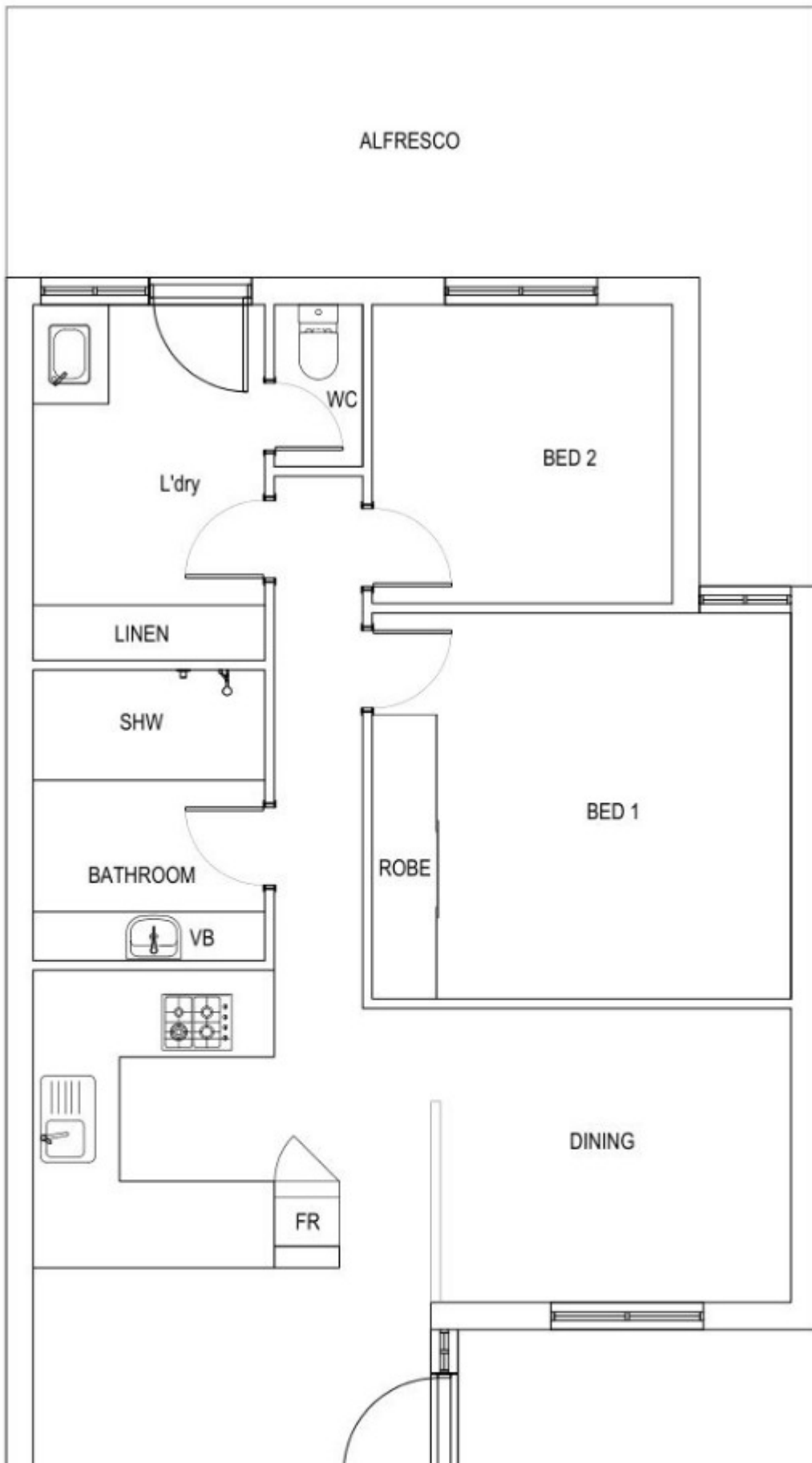
3 BED | 1 BATH | 1 CAR

PRICE:
\$275,000

OPEN FOR INSPECTION:
N/A



Shendelle Harding
0412713911
harding@atrealty.com.au
www.atrealty.com.au



Disclaimer: Please note this floor plan is for marketing purposes and is to be used as a guide only. All dimensions are estimates only and may not be exact measurements.

