



# FOR SALE

## STUNNING FAMILY HOME ON 1/4 ACRE!!

### NEW YEAR NEW PRICE !!

Set on a massive 1038m2 block is this perfectly located two storey family home! Positioned within 260m to the local corner store, 1km to local schools and train station , 2.4km to Morayfield shopping centre, and within minutes to North and South bound highway access this home is perfectly situated.

From the moment you walk inside you can see just how loved this family home truly is! Upstairs consist of Modern Bathroom with bath ,3 bedrooms with built in robes and open plan modern kitchen with island bench and lounge area, as you walk downstairs you'll be delighted to see another large rumpus room, separate laundry, study and potential bedroom which leads into two-way bathroom!!

If all those features don't grab you! Fear not we have left the best to last!! As you walk out the back door you'll be more than delighted to see the MASSIVE outdoor entertainment area overlooking the massive 1038m2 yard! This back-entertainment area is like you have never seen!! You truly must inspect to really get the full picture!!

### Features Include:

- Massive 1033m2 usable block!
- 2 street accesses
- Fully fenced in colour bond fencing
- Massive outdoor entertainment area
- 4x car accommodation!
- 3 bedrooms upstairs and 1 downstairs
- Large study
- Main bathroom with bath
- Modern Large kitchen with Island bench!
- Downstairs two-way bathroom!
- Separate laundry
- Located within minutes to ALL amenities
- Air-conditioning and ceiling fans throughout

This property wont last long so call Paige today!

4 BED | 2 BATH | 4 CAR

### PRICE:

Offers Over \$399,000

### OPEN FOR INSPECTION:

N/A

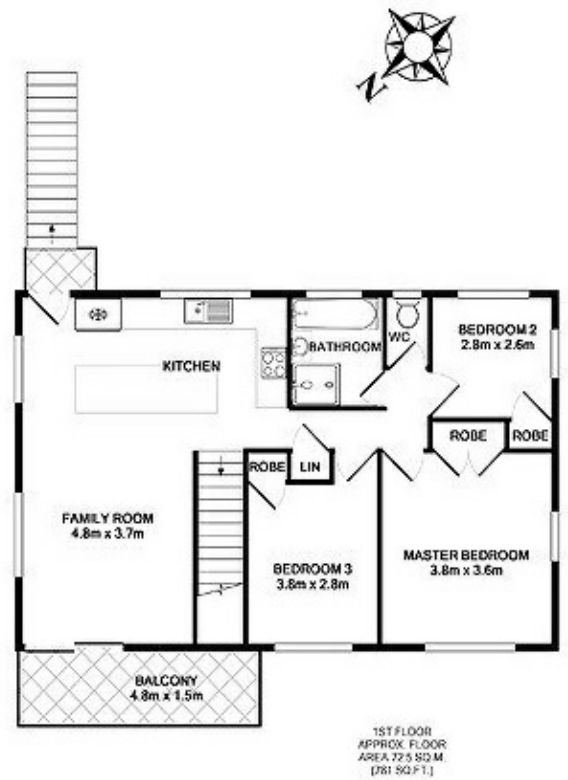
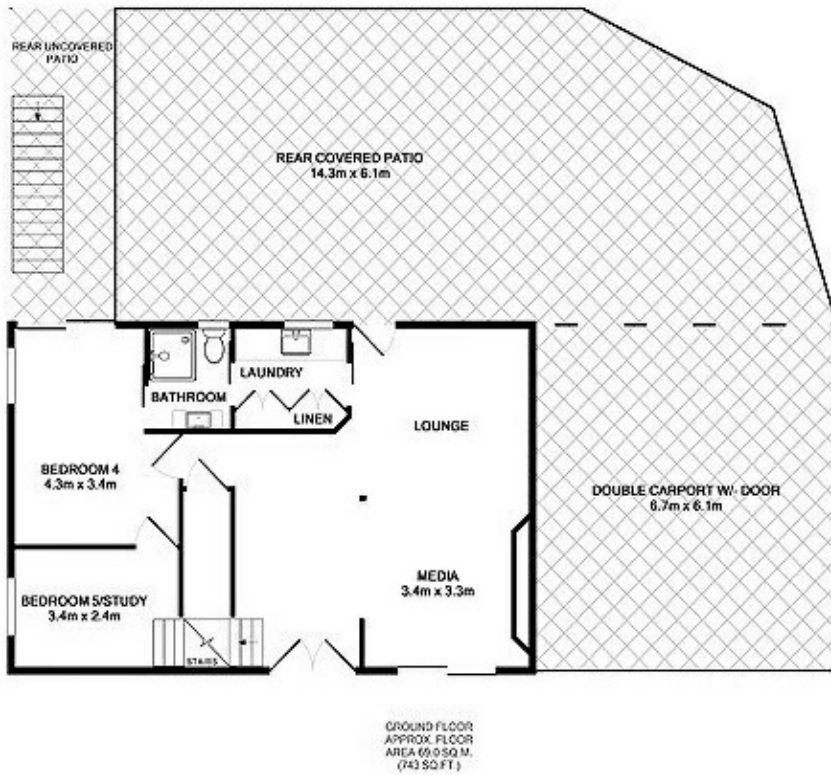


**Mark Poole**

**0417731453**

markpoolecommercial@atrealty.com.au

[www.atrealty.com.au](http://www.atrealty.com.au)



Disclaimer: Please note this floor plan is for marketing purposes and is to be used as a guide only. All dimensions are estimates only and may not be exact measurements.