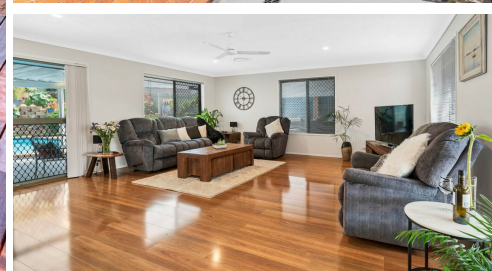


# 12 PLATEAU CRESCENT CARRARA



## FOR SALE

### DUAL LIVING – NEWLY RENOVATED – INGROUND POOL

Superbly situated on desirable Plateau Crescent, this beautifully presented home offers room for the whole family with dual living options, multiple entertaining areas and an inground pool. On the high side of the road, with a fabulous, newly built deck off the front of the home, you'll have the advantage of enjoying summer breezes and Carrara views with a level, grassed area alongside for the kids.

#### MAIN RESIDENCE:

The main home offers open plan living with four bedrooms (two with ensuites), three brand new bathrooms, and boasts a beautiful new kitchen at its heart. Fitted with Bosch and Omega appliances, pendant lighting, an island bench with waterfall edges and contemporary benchtops with a moulded sink, the kitchen looks amazing – and overlooking the pool and living area, it's the perfect place for family and friends to gather.

Entertaining areas flow from the inside out to the private pool, hidden from the neighbours and the road.

#### POTENTIAL DUAL LIVING:

Offering three bedrooms, bathroom, full kitchen, laundry and open plan living with separate side access, the possibilities here are numerous. Dual living? Or perhaps add internal stairs (engineer's plans available) and configure as a seven bedroom home.

Families, extended families and investors will appreciate the easy access to the M1, public transport, local shopping and schools, and with Robina and Pacific Fair only a short drive away and Metricon Stadium even closer, this beautifully presented, renovated home ticks lots of boxes.

Contact Tayla McCarthy for viewing times or for more details about the property.

Main Residence:  
-4 bedrooms, 3 bathrooms.  
-2 ensuites, built-in robes.

7 BED | 4 BATH | 2 CAR

#### PRICE:

Offers above \$699,000

#### OPEN FOR INSPECTION:

N/A



**Tayla McCarthy**

**0466880138**

[tayla@atrealty.com.au](mailto:tayla@atrealty.com.au)

[www.atrealty.com.au](http://www.atrealty.com.au)



12 Plateau Crescent, Carrara

TOTAL APPROX. - FLOOR AREA 306.98 SQ.M. - LAND AREA 836 SQ.M.

@realty

Tayla McCarthy 0466 880 138

Whilst every attempt has been to ensure the accuracy of the floor plan contained here, measurements of doors, windows, rooms, and any other items are approximate and no responsibility is taken for any error, omission, or mis-statement. This is for illustrative purposes only and should be used as such by any prospective purchaser. [www.picsandmortar.com](http://www.picsandmortar.com)

Disclaimer: Please note this floor plan is for marketing purposes and is to be used as a guide only. All dimensions are estimates only and may not be exact measurements.